



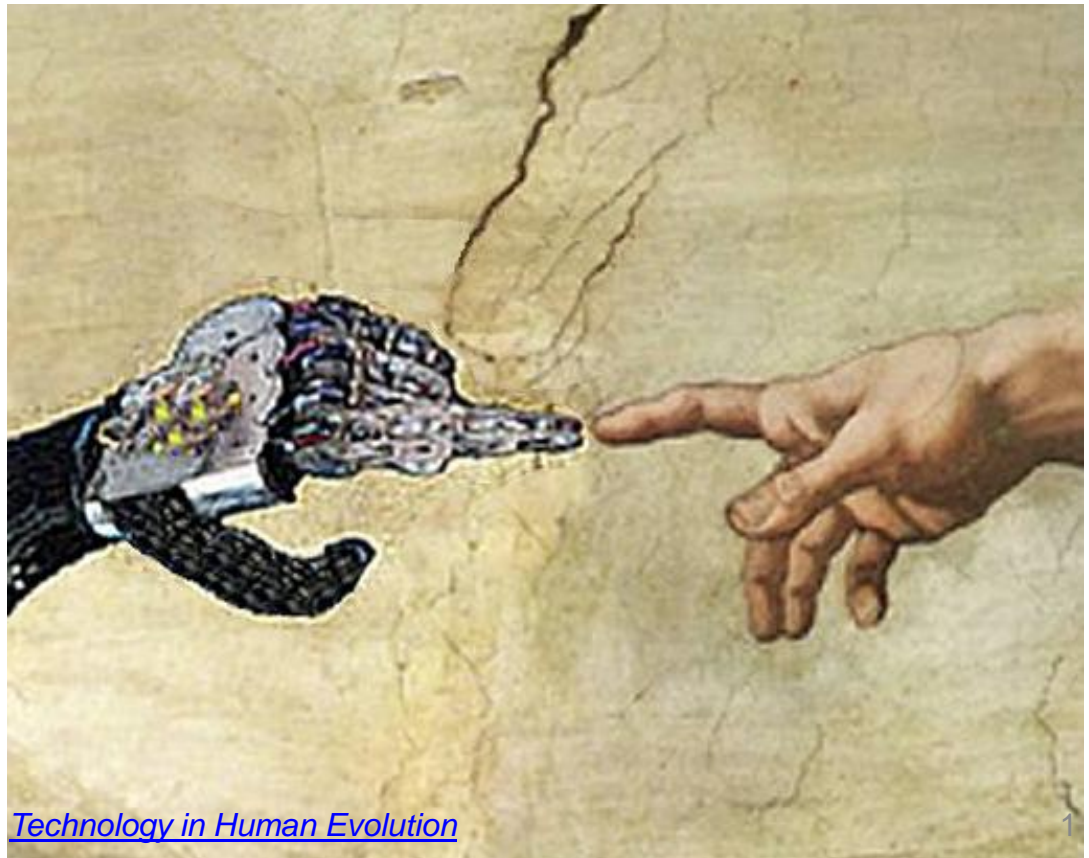
THE RETURN OF THE MOON

Infertility of Women – Incarnation?

Andrew Linnell

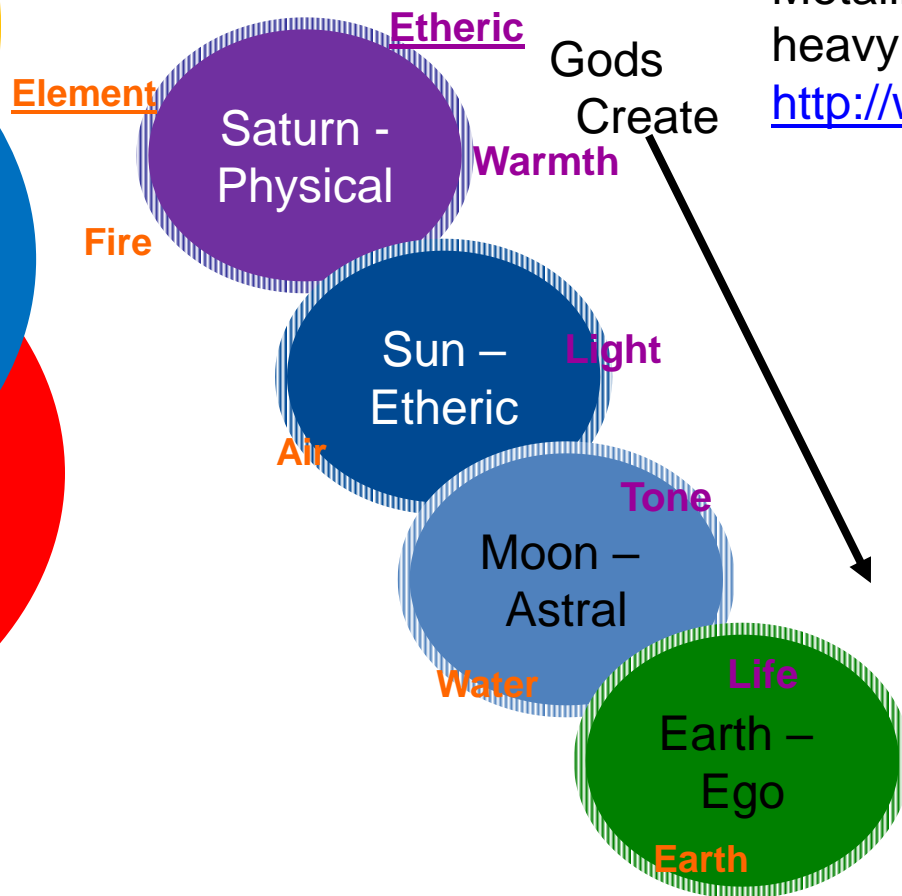
jandrewlinnell@yahoo.com

www.thechristianmysteries.com



[Technology in Human Evolution](#)

FIRST 4 STAGES OF HUMAN CONDITION



Metallicity: 3 prior solar systems to have heavy metals. See:

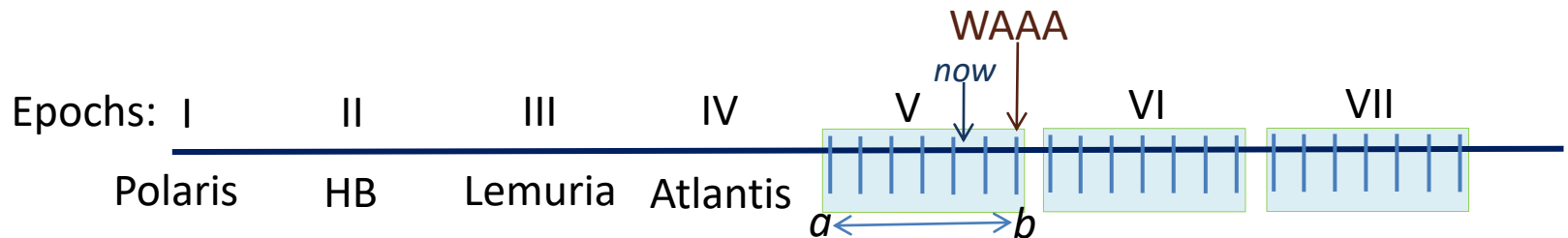
<http://www.eso.org/public/usa/news/eso0129/>

‘sun’ and ‘moon’ separate

Recapitulation: ‘sun’ separates from ‘earth-moon’ then moon separates during Lemuria, separation of the sexes completes in mid-Atlantis

SEVEN EPOCHS WITHIN EARTH-CONDITION

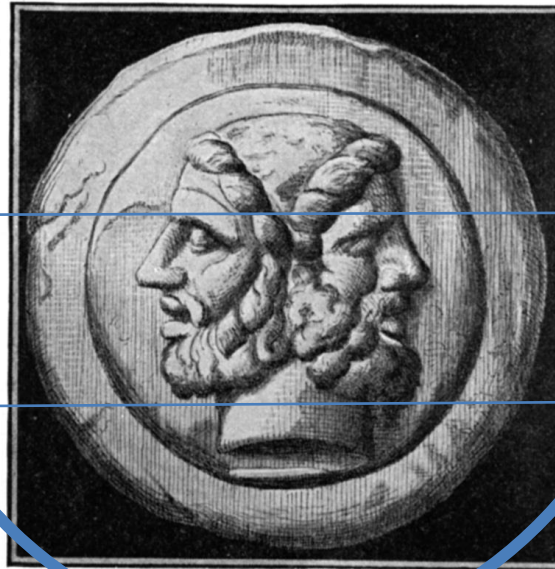
- “In the **seventh epoch** of civilization, this War of All Against All will break out in the most terrible form.
- “Great and mighty forces will be let loose by the discoveries, turning the whole earth-globe into a kind of [self-functioning] live **electric mass**.
- “In a way that *cannot be discussed*, a tiny handful will be protected and preserved.”
- R. Steiner, *The Atom as Coagulated Electricity*, GA 93, 24 Dec. 1904



FULFILLMENT OF CULTURAL AGES

- “The Third PACA [Egypto-Chaldean] reappears in the Fifth, in order to permeate human souls with what the Fourth PACA has brought as something completely new
- Something similar will be the case with the Sixth PACA in regard to the Second, and the Seventh in regard to the First, the ancient Indian PACA”

R. Steiner, *Occult Science, The Present And Future Of Cosmic And Human Evolution*



Janus Face

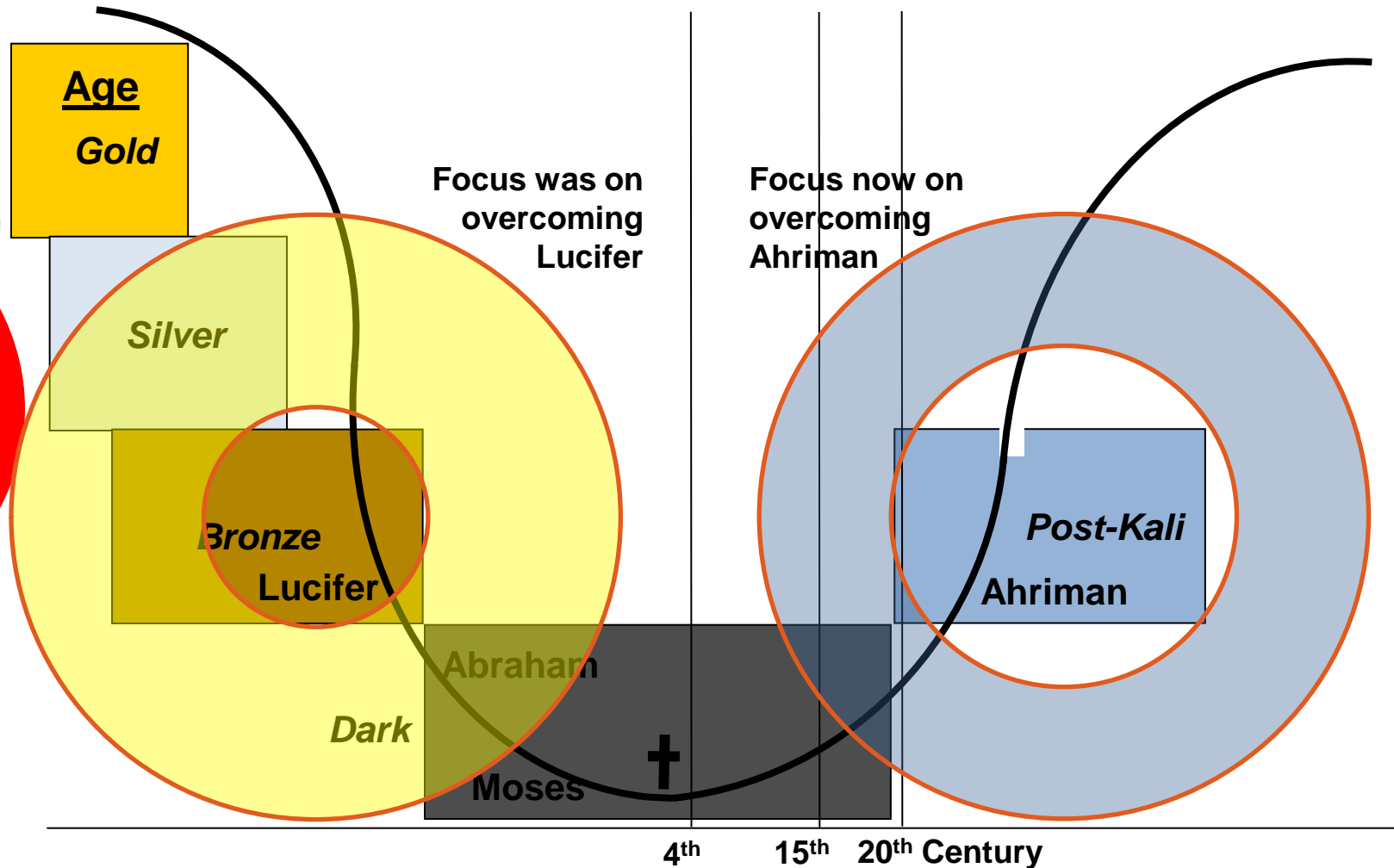


FUTURE CULTURAL AGES AND EPOCHS

- 6th **PACA** (Russian) survivors will found civilization after WAAA
 - Founds the civilization in Revelations called the 7 Seals
 - As the 5th Atlantean race founded the PA cultures, so the 6th, not 7th
 - Western Path: Taking on Evil (Mission of Mani)
- 6th **Epoch**: Will live in a **Descended** Astral World (7 Seals)
 - Current images, expressions, manifestations
 - Unable to hide anything
 - Show good and evil in their faces – *but what will be our face?*
 - Evil man will express his evil, a good man will express the good
- 7th **Epoch**: Will live in a **Descended** Devachan (Heavenly)
 - Impossible to hide what is in one's soul even in speech
 - Thought no longer remains dumb – becomes Word
 - Goal: All earthly beings become an astral heavenly body
 - Physical substance will be 'dissolved' as Archai achieve Atma
 - Countenance and words of beings as expression of Christ

Rudolf Steiner, *The Apocalypse of St. John*, Lectures on the Book of Revelation, 12 lectures from 17 to 30 June 1908

POST ATLANTEAN HISTORICAL PICTURE PENDULUM





MOON WILL REUNITE WITH THE EARTH

- “Now you know that one day the moon will reunite with the earth.
- The point in time when this reunion of moon and earth will occur is placed by astronomers and geologists who live in abstractions, many, many thousands of years in the future; that, however, is an illusion.
- **In reality, we are not so very far away from that point in time.**
- As you know, humanity as such is becoming younger and younger.
- It is becoming more and more the case that the development of body and soul only continues up to a certain point in life.
- At the time of the death of the Christ when the event of Golgotha took place, mankind in general was capable of physical and soul development until age 33.
- Today, people are able to develop only until age 27. In the 4th M A.D., a time will come when human beings will be capable of development only until age 21.
- Again, in the 7th M, a time will come when their bodily nature will be capable of development only until the 14th year of life. Then, women will cease to be fertile; *an entirely different form of living on earth will come about.*
- That will be the time **when the moon will again approach the earth and will be incorporated into it.”**

– R. Steiner, *Materialism and the Task of Anthroposophy*, Lecture XIV, Dornach, 13May1921, GA204



IMPACT OF MOON'S RETURN

- “The moon once separated from the earth; the moon will reunite with the earth again.
 - [If an asteroid destroyed dinosaurs, can we survive a collision w/moon?]
 - And just as this moon separation had a tremendous impact, so will the moon's reentry.
- It is true that we will still be inhabiting the earth then as human beings, *but we shall no longer be born in the ordinary way.*
- **We shall be connected with the earth in a way *other than through birth.***
 - We shall have evolved in a certain manner by the time this point is reached.
- We must now learn to connect what is happening today — the increasing shadowiness of the intellect — with what will occur one day in earth evolution as an incisive event, namely, the moon's whirling back into earth's matter.”
 - R. Steiner, *Materialism and the Task of Anthroposophy*, Lecture XIV, Dornach, 13May1921, GA204

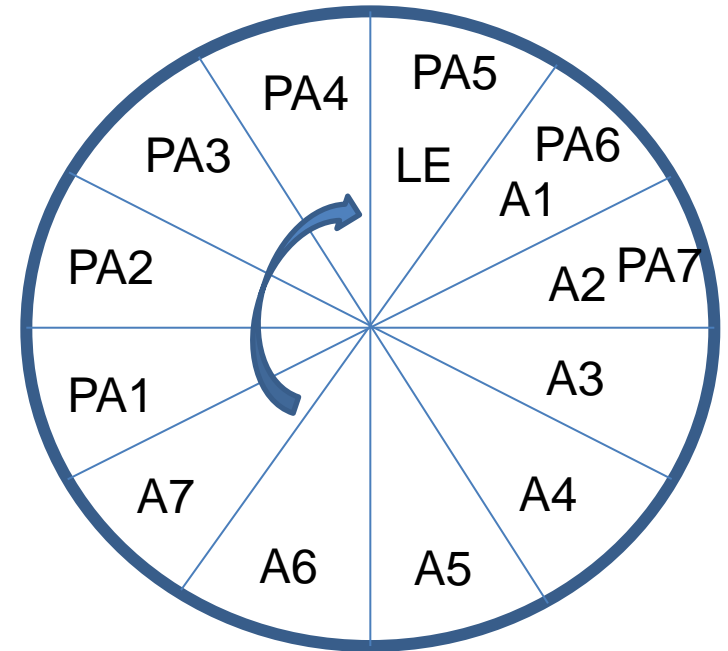


WHY DID THE MOON LEAVE?

- Something like that would have happened to the earth if the moon forces had remained within it — it would have cracked and crumbled into lumps of dust. Something like that will happen to the earth one day, when it has fulfilled its task — it will crumble into cosmic dust. Earthly matter will be dissolved in cosmic space as cosmic dust when man has passed through his evolution upon it. Thus we can say that the earth would have become dust, it had the tendency to become dust, to crumble into particles of dust. It has only been saved from doing so already by the withdrawal of the moon.
- [It is] Jahve-Elohim who has imprinted this moon-earth-dust into the human body. So there must have been a point in the course of earth evolution when it would be correct to say that in the cosmic progress of the Elohim, Jahve-Elohim imprinted into the human body the earth-dust, the moon-earth-dust. These are the depths beneath that passage in the Bible which says that “Jahve-Elohim formed man of the dust of the earth.” For that is what it says. None of the translations which convey that Jahve-Elohim formed man out of “a clod of earth” make any sense. Jahve-Elohim imprinted into man the earth-dust.
 - Genesis, Lecture 9,

PLASTICITY OF BODY AND SOUL BY AGE

- Lemuria [D.]
- Atlantis
- Post-Atlantean
- I. 56 49
- II. 49 42
- III. 42 35
- IV. 35 28 33 – Christ
- 1879 V. 28 21 Today 27
- VI. 21 14 Year 4,000
- VII. 14 7 Year 7,000 – women become infertile
- [D.] Year 8,000 – moon returns



Each pie slice
represents
~2160 years

EVOLUTION OF CONSCIOUS AWARENESS

Not to scale

Spiritual world full of beings

Sentient Soul 3rd M BC

Ancient Mysteries

Intellectual Soul 8th C BC



End of the "Earth" (4th C)

Materialism →

seals → trumpets
1413 5th PA Age

Consciousness Soul

Jesus was just a good man

Who needs religion anyway?

He who you seek is no longer here!

8th M Moon returns

American Cultural Age

7th M Women are infertile

5733 End of 6th PA Age

Russian Cultural Age

3573 End of 5th PA Age

End of 20th C Meeting with
Sp. Beings

What happens to our
bodies?



ENDING OF PHYSICAL BODIES

- “In a time not all that far ahead, possibly as early as the seventh millennium, all women will be infertile on earth
 - Due, in part, to the **withering and crumbling of human bodies**
 - The fact is that women will no longer be able to have children, even before the earth has gone through all its stages
- If the **relationships** that can only come into their own between the **inner life & the physical body** were to continue unchanged, people would ***no longer find anything to do on earth***
 - Human beings therefore have to find a different way of relating to **earthly existence** – the **final stages of earth evolution** will make it necessary for them to do without physical bodies and yet be present on earth”
- AL: Thus, the relationship between the inner life & the physical body must change, must find new *rhythm*-connection

R. Steiner, *Fall of the Spirits of Darkness*, lecture 5, 7Oct1917, GA 177



THIS IS A LONG WAY OFF, RIGHT?

- How many more incarnations left (*to resolve my karma*)?
 - 100s?
 - 1000s? $((6400-2015) / 2160) * 3 = 6 !$
- **Now non-human beings are descending** (since 1880) to earth from other planets
 - For example: the Great Teachers of Humanity from the Moon
 - They depend on entering into human **relationship** to further their own existence – found in one's **inner life**
 - Spiritual Science arises through the help of these beings
- **More and more of such beings** will move among us
 - **We need to understand them**, they will aid us
 - Transform our 'shadowy' intellect to living thinking → Imagination



ENDING OF THE EPISODE OF BIRTHING

- “At the time of the departure of the moon, physical birth commenced.
- The human being began to be born of woman.
- Just as this came to pass, so in the future the human being will no longer be born of woman.
- For that is only a passing episode in the whole of cosmic evolution.
- It is the episode that is to bring to man the feeling of freedom, the consciousness of freedom, the integrated wholeness of individuality and personality.
- It is an episode that must not be disdained, an episode that was necessary in the whole cosmic process, but it must not be retained. Human beings must not give themselves up to the indolence of merely looking up to an abstract divine principle; they must concretely behold everything connected with their evolution.
- For they can attain a true inner revitalization of the whole soul-spirit being only if they comprehend that great period of time — but in its concrete evolutionary configuration — through which they will live in successive earth incarnations.”

— R. Steiner, *Materialism and the Task of Anthroposophy*, Lecture XIV, Dornach, 13May1921, GA204



PROCREATION IN 6TH AND 7TH PA AGES

- In the sixth Post-Atlantean Age of civilization, the human fertility which depends on the powers of light for its impulses will gradually come to an end
 - The **powers of darkness will have to intervene** so that the affair may continue for a time
- We know the seeds for the **sixth Post-Atlantean Age** of civilization lie in the **East of Europe**
 - The East of Europe will develop powerful tendencies which do not allow physical human reproduction to continue beyond the sixth period of civilization but, instead, let the earth enter into a form of **existence in soul and spirit**
- The other impulses for the **seventh Post-Atlantean Age** of civilization, in which procreation will be guided by impulses from the **cast-down Angels**, will come from **America**
 - What kind of bodies are these?

R. Steiner, *Fall of the Spirits of Darkness*, lecture 14, 28Oct1917, GA 177

WHAT WILL LIFE BE LIKE IN THE 8TH MILLENIUM?

- Women will already be infertile
 - Without procreation, will today's physical body cease to exist?
 - Or will all babies be “test tube” babies?
- Moon will recombine with Earth
 - Forces & beings (physical life, as we know it, will not be possible)
- Our thoughts today become the earth's new reality
 - What has no reality today will become reality then
 - Because we can think only of the material:
 - **New beings** between mineral and plant kingdoms
 - Resemble automatons
 - Over abundant intelligence
 - Connected network like spiders





REPLACING THE PHYSICAL FORM OF BIRTH

- “With this kind of science we can only learn about the part of man's being which has a significance **from the time of the separation of the moon until its return**, when the shadowy thoughts of modern times will become spidery creatures having a concrete existence.
- A form of knowledge must develop which produces quite a different conception of the being of man, and it can be developed only by **raising science to the level of artistic perception**.
 - We shall realize then that science as it is today is capable of **grasping only the mineral nature**, whether in the mineral kingdom itself or in the kingdoms of plant, animal and man.
- Even when applied to the plant kingdom, **science must become a form of art**, and still more so in the case of the animal kingdom.
- To think that the form and structure of an animal can be understood by the means employed by anatomists and physiologists is nonsense.
 - And so long as we fail to realize that it is nonsense, the shadowy intellect cannot be transformed into a living, spiritual comprehension of the world.
 - What is taught to young students today in so abstract a form in the universities must be transformed and must lead to a really artistic conception of the world.
- For the world of Nature itself creates as an artist. And until we realize that Nature is a world of creative art which can be understood only through artistic feeling, no healing will come into our picture of the world. ... they are taught only about the mineral structure in man, about that part of his being which **will one day be woven into the network of spider-like creatures extending over the earth**. ...
 - Source: R. Steiner, *A Picture of Earth-Evolution in the Future*, Dornach, 13May1921, GA204



REPLACING THE PHYSICAL FORM OF BIRTH

- **“His birth from woman began with the departure of the moon, but this physical form of birth is only a passing episode in the great sweep of cosmic evolution and will be replaced by another. ...**
- The human will is threatened with being deprived of spiritual impulses and with becoming involved in the spidery web that will creep over the earth.
- There are men in existence who imagine that they will gain their ends by promoting their own spiritual development and leaving the rest of their fellow-beings in a state of ignorance.
- But the vast majority live in complete unawareness of the terrible destiny that awaits them if they lend themselves to what an ancient form of spiritual knowledge called the “sixteen paths to corruption.”
 - For just as there are many ways in which the shadowy intellect may be directed to the impulses and knowledge coming from the spiritual world, so naturally there are many ways in which varieties of the shadowy intellect will be able to unite with the spider-beings who will spin their web over the earth in times to come.
 - Intellect will then be objectivised in the very limbs and tentacles of these spidery creatures, who in all their wonderful inter-weavings and caduceus-like convolutions will present an amazing network of intricate forms.
- **It is only by developing an inner understanding for what is truly artistic that man will be able to understand the realm that is higher than mineral existence — that realm of which we see an expression in the actual shaping and form of the surfaces of things in the world.”**
 - Source: R. Steiner, *A Picture of Earth-Evolution in the Future*, Dornach, 13May1921, GA204



PREPARATION FOR MOON'S RETURN

- “To cultivate Spiritual Science means to open the doors to those **influences from beyond the earth** which have been seeking to come down to the earth since the last third of the nineteenth century
 - Cultivation of Spiritual Science is in very truth a cosmic event of which we ought to be fully conscious
- We survey the whole span of time from **the separation until the return of the moon**
 - The moon which reflects the sunlight back to us, is in truth deeply connected with our existence
 - **It separated itself from the earth in order that man might become a free being. But this period of time must be utilized by man in such a way that he does not prepare the material which, with the re-entry of the moon into the earth-sphere, would combine with the moon-substance to produce that new kingdom of which I have tried to give you a graphic picture**
- Now and then there arises in human beings of our time a kind of foreboding of what will come about in the future
- In the picture of his valley of death, in Nietzsche's imagination, there was a subconscious **vision of the future**, and within this valley of death he placed the figure of the ‘ugliest man’
 - It was a kind of foreboding of what will happen if men continue to cultivate shadowy thoughts
- For their destiny then will be that in hideous shape they will be caught up by the forces of the moon-existence as it comes down into the sphere of the earth and will **become one with the brood of spidery creatures of which I have been speaking**
- - Source: R. Steiner, *A Picture of Earth-Evolution in the Future*, Dornach, 13May1921, GA204



OUR CONNECTION WITH EARTH CHANGES

- **“We know that some day the Moon will re-unite with the Earth**
- **This is known by abstract astronomy and other sciences, but they push the time far into the future — it is however really not very far off**
- In the course of evolution, humanity is becoming younger and younger and retains the power of evolving in body and soul to a definite age. In ancient India man retained plasticity up to the age of 56. At the time of Golgotha to the age of 33; now, to the age of 27. In the 6th post-Atlantean epoch it will be to the age of 21-14 in the 7th epoch, 14-7.
- **Woman will cease to be fertile, another mode of entering earthly life will take place when the Moon re-unites with the Earth, in 8,000 A.D.**
- **The re-uniting of the Moon with the Earth will be of great significance; *we shall be connected with the Earth differently***
 - R. Steiner, *Evolution of Human Freedom and Personal Consciousness*, Dusseldorf, 19Jan1905 (no GA)



SUPER-EARTHLY BEINGS TO THE RESCUE

- The intellect will become more and more shadowy
- If man does not resolve to absorb what is to descend from the spiritual world, he will pass completely over to the shadowy side of his intellect
 - The intellect is now only able to understand the mineral kingdom, it cannot penetrate to the human being
 - Plant life is a deep riddle to it, animal life is more so, human life is completely opaque
- The formation of images devoid of reality will continue unless man resolves to develop imagination
 - If he does this the shadowy pictures will be re-animated by Spiritual Science, and become not merely human events but cosmic as well
- We read in “[Occult Science](#)” that human souls at one time left the earth for other planets and later returned to earth existence
 - In turn those from Mars, Jupiter and the other planets returned to the earth
 - R. Steiner, *Evolution of Human Freedom and Personal Consciousness*, Dusseldorf, 19Jan1905 (no GA)



SUPER-EARTHLY BEINGS TO THE RESCUE

- All these events are substantiated by investigations of the spiritual world and in this connection we find an extremely significant event in the 7th decade of the 19th C
 - **Man returned to earth from the other planets up to 1879**
 - Since then other beings from foreign cosmic regions enter into relation with earthly man
- In Atlantis man was the last being to enter the earth; since 1879 Vulcan beings descend into earthly evolution
 - They are the first, Super-earthly Beings to bring messages; to them we owe Spiritual Science
- The human race does not welcome these Beings, as a whole it ignores them
 - This will bring the Earth into a tragic condition ultimately
- They will continue to descend, but man will **not understand their speech except by understanding Spiritual Science which should transform the social environment**
 - **These Vulcan Beings, from between the Moon and Mercury, are trying to obtain a foothold in earthly existence**
- **They seek to be the fore-runners of the end of the earth and the return of the moon**
 - Our shadowy intellectual understanding must be re-animated by Spiritual Science
- Shock after shock will arise and the earth will dissolve into chaos if these Beings meet with opposition from humanity
 - R. Steiner, *Evolution of Human Freedom and Personal Consciousness*, Dusseldorf, 19Jan1905 (no GA)



DRAMA AT THE FOUNDATION MEETING

- “The fortunate one for the progress of the Movement has actually come about. It may now be said that ever since the new Foundation of the Anthroposophical Society at the Goetheanum last Christmas, **those Spiritual Powers from whom our revelations are received have showered upon us even greater grace than before**” (published in “Appendix” in *Cosmic Christianity and the Impulse of Michael*; 1953).



FROM AN OUTLINE OF OCCULT SCIENCE

- “The transformations in the things of the earth existing outside the human being occur with a certain relationship to humanity's own evolution. After the **seventh cultural period has run its course**, the earth will be visited by a catastrophe that may be likened to what occurred between the Atlantean and post-Atlantean ages, and the transformed earth conditions after this catastrophe will again evolve in seven time periods. Human souls who will then be incarnated will experience, at a higher stage, the union with the higher world experienced by the Atlanteans at a lower stage. Only those human beings, however, in whom are incarnated human souls that have developed in a manner possible through the influences of the Greco-Latin epoch and the subsequent fifth, sixth, and seventh cultural epochs of the post-Atlantean evolution will be able to **cope with the newly formed earth conditions. The inner being of such souls will correspond to what the earth has then become.** Other souls will then have to remain behind, whereas previously they would have had the choice of creating the conditions for advancement. Souls who will have **created the possibility for themselves**, in the transition from the fifth to the sixth post-Atlantean period, of **penetrating supersensible knowledge** with the **forces of intellect and feeling**, will have the maturity for the corresponding conditions following the next great catastrophe. The **fifth and sixth periods** are, so to speak, **decisive**. In the seventh, the souls who have reached the goal of the sixth will develop correspondingly further; the other souls, however, will, under the changed conditions of the environment, find but **little opportunity of retrieving what they have neglected**. Only at some future time will conditions appear again that will permit this. - Evolution thus advances from age to age.



FROM AN OUTLINE OF OCCULT SCIENCE

- “*Supersensible* cognition not only observes such future changes in which the earth alone takes part, but it is also aware of changes that occur in co-operation with the heavenly bodies in its environment. **A time will come when the evolution of the earth and mankind will have advanced so far that the spiritual beings and powers that had to sever themselves from the earth during the Lemurian age, in order to make possible the continued progress of the earth's beings, will be able to unite themselves again with the earth. The moon will then reunite with the earth. This will occur because at that time a sufficiently large number of human souls will possess so much inner strength that they will use these moon forces for the *benefit of further evolution*.** This will occur at a time when, alongside the high level of development that will have been reached by a certain number of human souls, another development will occur that has taken the direction toward evil. The laggard souls will have accumulated in their karma so much error, ugliness, and evil that they will form, for the time being, a special union of evil and aberrant human beings who **violently oppose** the community of good men.



FROM AN OUTLINE OF OCCULT SCIENCE

- “The good humanity will through its development acquire the **use of the moon forces and thereby so transform the evil part** also that, as a special realm of the earth, it may participate in further evolution. Through this work of the good humanity, the **earth, united with the moon**, will be able, after a certain period of evolution, **to reunite also with the sun and the other planets**. Then, after an intermediate stage, which presents itself as a sojourn in a higher world, the **Earth will transform itself into Jupiter**.
- Within this state, what is now called the mineral kingdom will no longer exist; the forces of this mineral kingdom will be transformed into plant forces. The plant kingdom, which in contrast to the present plant kingdom will have an entirely new form, appears during the **Jupiter** state as the lowest kingdom. To this a higher kingdom is added, the transformed animal kingdom; above it there is a human kingdom, which proves to be the progeny of the evil community that arose on the earth; above all these are to be found the descendants of the good community of earth men, a human kingdom of a higher order. A great part of the activity of this latter human kingdom consists in the work of ennobling the fallen souls of the evil community, so that they may still be able to find their way back into the actual human kingdom.” (2, pp. 360-361)



THE GODS AND THE HUMANS

- The vital point, the point of intersection and of change in the ascending life of mankind, lies at the time of the separation of the sexes
- There is some analogy between the relations established by the world of mankind with the divine world and by the human kingdom with the animal kingdom
 - Oxygen and carbonic acid are in-breathed and out-breathed by man
 - Plant-kingdom breathes out oxygen; man ‘breathes’ out *love* since separation of the sexes
 - The Gods are nourished by this effluence of love
- **Mankind is at the same time a fallen God and a God in the becoming**
- The kingdom of the heavens is nourished by the effluence of human love
 - Ancient Greek mythology expresses this reality when it speaks of nectar and ambrosia
- Through human love, the life of the Gods is sustained
- When Lucifer, in the form of serpent, induces man to seek for knowledge, Jehovah is wrath
 - Lucifer is here understood as fallen God who instills into man ***the desire*** for personal knowledge
 - This sets mankind in opposition to the Divine Will which has created him in its image
- Rosicrucian science explains the role of Lucifer in the world: “Know, O man, that through thy being flows a current which ascends and a current which descends”
- - Source: <http://wn.rsarchive.org/Lectures/GA094/English/SGP1978/19060527p01.html>



CULMINATION OF EARTH EVOLUTION

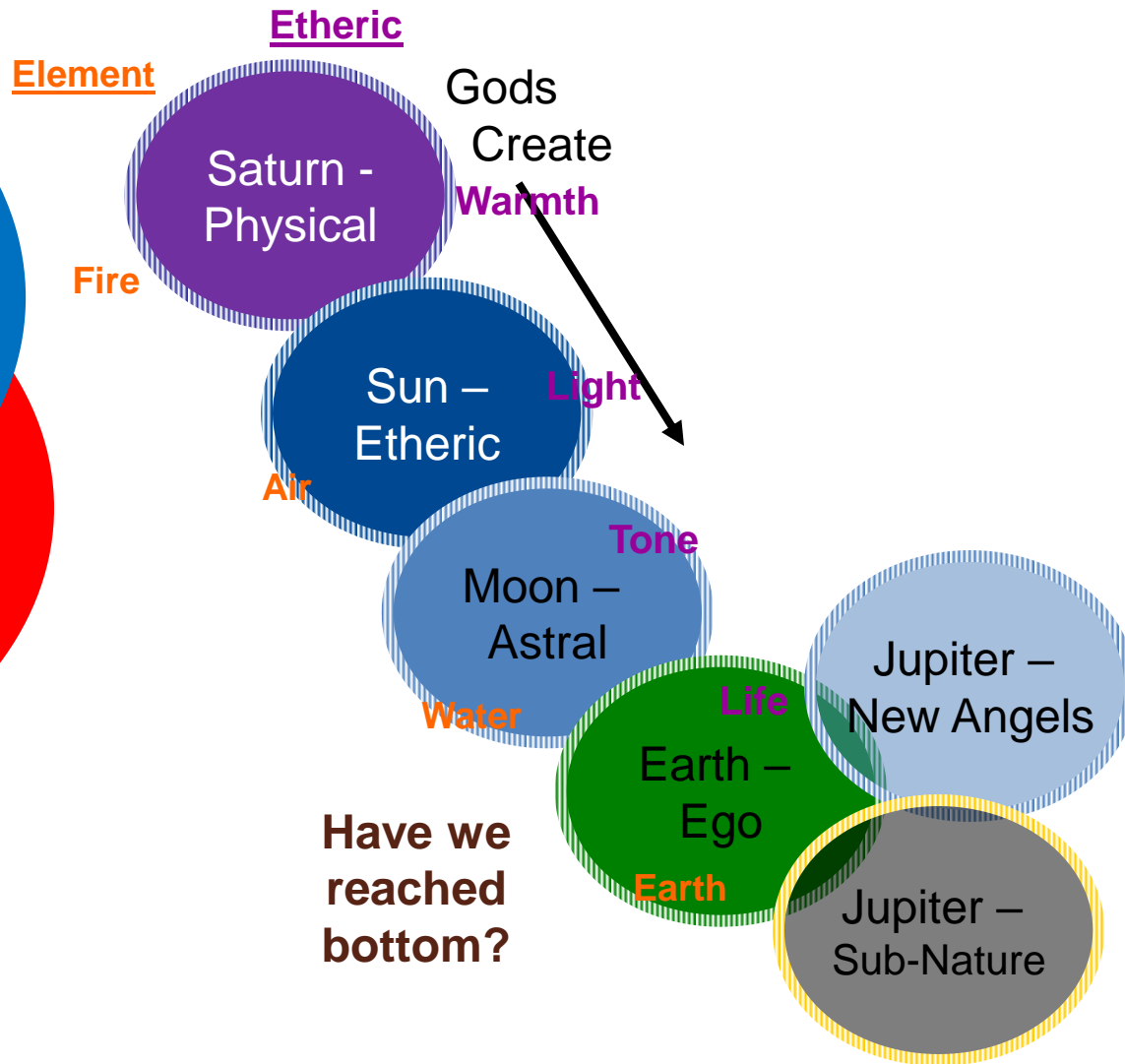
- **Reunion with the Sun**
 - Reunion with the Moon is a “training” step
- “... then the Lord God formed man of dust from the ground and breathed into his nostrils the breath of life; and man became a living being ...” (Genesis 2:7) This happened during Lemurian times. At that time luciferic beings worked into the astral body of the human being. However, it was just by doing this, by slipping into the astral body that they caught up with what they themselves had neglected in the past. What they should have accomplished on Old Moon, they went through vicariously within the human being.
- When the sun will have again united with the earth, then human beings — through the fact that they will have purified their instincts, desires, and passions — will redeem the luciferic beings. The luciferic beings who do not go on to the Sun remain in their original condition. They then appear as expelled into the evil, lower astral world. This is the ancient snake and it emerges as the first dragon. Therefore, when the earth enters the sun, a dragon appears. But there are yet other beings left behind: such human beings who could not prevent themselves from dropping back into animality, who remain slaves to their animal instincts. While the other human beings go to the sun, these will form an evil power over and against the higher. These form the second monster, and the writer of the Apocalypse says in his exact fashion: The luciferic dragon appears in heaven because he comes from higher worlds; the second beast arises from the sea — this consists of the souls of animalistic human beings who have remained behind. (Compare: (Rev. 12:3–13:10))
- *Reading the Pictures of the Apocalypse*, Lecture 11, Kristiania, 20May1909



CULMINATION OF EARTH EVOLUTION

- We have still a third vision, that of the black magicians. They do not remain stuck in animality; they develop spiritual abilities. In full consciousness they have turned away, and provide a bodily incarnation for Sorat. That will be the incarnation in flesh of the demon of the sun.
- But then we see how the earth emerges from the sun yet again in the future. If the spiritual human beings were to remain united with the sun forever, then the other human beings who, without guilt, had remained behind in animality would never be saved. So, these spiritualized people come forth once more and unite with what has fallen out of evolution in an attempt to save these backward souls. When the earth began its existence as “earth” it had to briefly repeat the Saturn, Sun, and Moon conditions once again. It went through recapitulations of those conditions before it became the present-day earth. Now, when actual earth conditions prevail, it must **prophetically mirror the future embodiments of Jupiter, Venus, and Vulcan**. In this way the earth goes through seven states during its actual earth condition. These states are usually called “rounds.” **During the prophetically mirrored Jupiter state, the earth will actually unite with the sun.** On this Jupiter-Earth all the great cultural ages will appear again — with the seven intervals between them — but they will be far less sharply delineated. On this Jupiter-Earth, many beings still have the possibility of being saved, even the black magicians.
- *Reading the Pictures of the Apocalypse*, Lecture 11, Kristiania, 20May1909

PREPARING FOR THE NEXT COSMIC STAGE OF THE HUMAN CONDITION



Up to super-nature
balanced by
down into sub-nature.
Mineral kingdom
dissolves away.

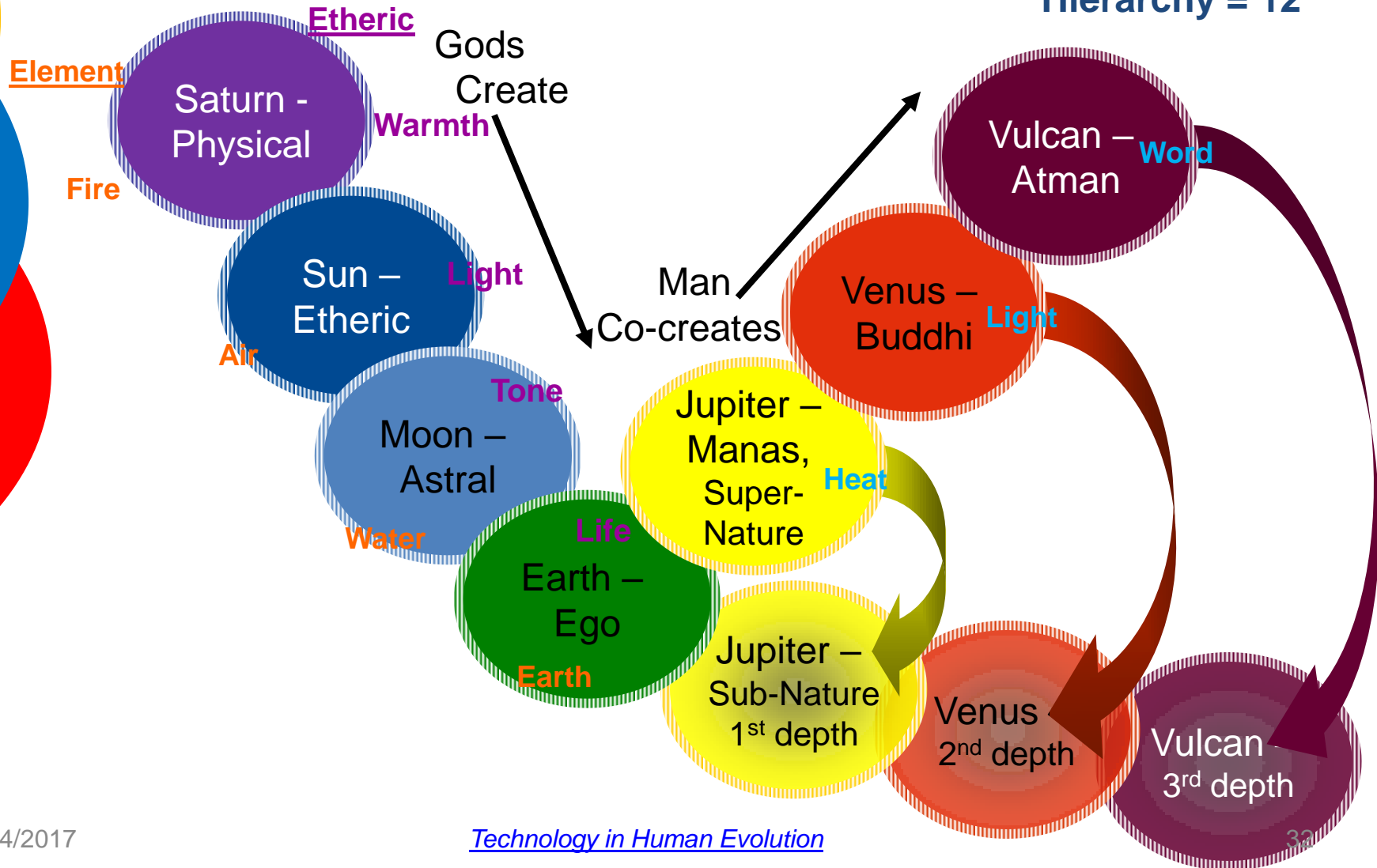


OUR DEBTS AND OUR DEBTORS

- During the second half of the prior planetary condition called Old Moon, when the angels were at the human stage, we entered their field of activity and became quite a nuisance to them. Some of them did not complete their goal - were we in part to blame? Is this what is meant by "forgive us our debt"? And now, in the second half of Earth evolution, those who will be human on Jupiter are being pushed up from below, through Ahriman's realm - so they come with an Ahrimanic "flavor", and they are becoming a nuisance for us? "As we forgive our debtors" is now understood. As those angels love us, so shall we love those who will be human next.

7 STAGES OF HUMAN CONDITION

Hierarchy = 12





CALLING TO LIFE OUR INTELLECT

- “Into our shadowy intellectual concepts the living wisdom that spiritual science is able to give must be received.
 - The shadow images of the intellect must in this way be called to life.
 - This calling to life of the intellect’s shadowy images is not only a human event, it is a cosmic event.
- Remember what I described in my Occult Science — how once upon a time human souls migrated up to the planets and afterward returned to earth existence. I outlined in my Occult Science how the human beings of Mars, Jupiter, and so on came down again to earth. Now, a most important event took place — it can only be described from the facts that are confirmed as truths in the spiritual world — a very important event occurred at the end of the seventies of the nineteenth century.
 - Whereas in ancient Atlantean times these human beings descended to earth from Saturn, Jupiter, Mars, and the other planets — and it was therefore a matter of human soul beings entering the earth existence then — now a time is beginning when beings **who are not human** are coming down to earth from cosmic regions beyond. ***These beings depend for the further development of their existence on coming to earth and on entering here into relationships with men.***
- Thus, since 1880, heavenly beings are seeking to enter this earth existence.
- Just as the Vulcan men were the last to come down to earth, so **Vulcan beings are now actually entering this earth existence.** *Heavenly beings are already here in our earth existence.*
- And it is thanks to the fact that beings from beyond the earth are bringing messages down into this earthly existence that it is possible at all to have a comprehensive spiritual science today.”
 - R. Steiner, *Materialism and the Task of Anthroposophy*, Lecture XIV, Dornach, 13May1921, GA204



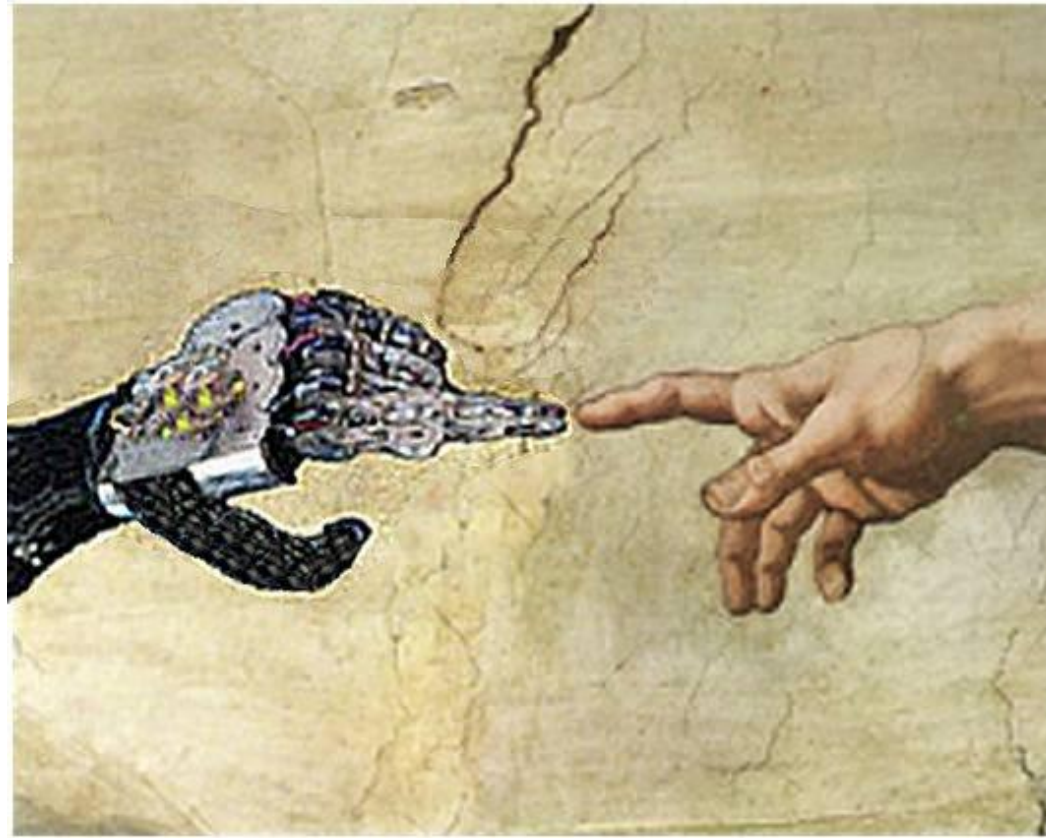
OUR RELATIONSHIP TO ENTERING BEINGS

- Spirit beings are seeking to come down into earth existence and must be received.
 - Humanity takes no notice of them, ignores them.
 - Initial such beings dwelt in the sphere between moon and Mercury.
- Upheaval upon upheaval will ensue, and earth existence will at length arrive at social chaos if these beings descended and human existence were to consist only of opposition against them.
 - [These] beings are presently conceived incorrectly because the mere shadowy intellect can only conceive of the mineral. All these unreal thoughts people are thinking will be endowed with being – becoming clever, evil, spidery beings .
- **For these beings wish to be nothing less than the advance guard of what will happen to earth existence when the moon reunites once again with earth. ...**
 - [In] the eighth millennium when moon existence will once more unite with the life of the earth.
 - Vulcan supermen, Venus supermen, Mercury supermen, Sun supermen, and so on will unite themselves with earth existence.
- If human beings persist in their opposition to them, this earth existence will pass over into chaos in the course of the next few 1000 years.
 - R. Steiner, *Materialism and the Task of Anthroposophy*, Lecture XIV, Dornach, 13May1921, GA204



DISCUSSION QUESTIONS

- What must we wrest from Ahriman?
 - As the East had to deal with Lucifer, so must the West deal with Ahriman
- What role do the Great Teachers of Humanity, as Moon beings, play in the drama with Ahriman?
 - How do they help to prepare us?
 - Do they work with Lucifer to 'warm' technology?
 - Are they at work when we 'love' our devices?
 - What role do they have regarding the coming infertility?
- What will our connection to the physical Earth be in a millennium?
 - Will it be through avatars?
 - Will virtual reality be at a level 'below' the physical?
 - If without physical bodies, will all humans be here simultaneously?
 - Are those destined to be human on Jupiter to be given robotic bodies?
- Can we see the reunification with the moon as a step towards reunification with the sun (much later)?



END RETURN OF THE MOON Q&A



ADDITIONAL MATERIAL



EGYPTIAN MYTHS AND MYSTERIES

- In the earliest times, when the sun departed, no animal forms had yet appeared. After the sun had left, the highest form of animal was a type that stood at the level of our present fish. When we say that the human feet corresponded to this fish-form, when we look at the feet in connection with fish, what does this mean? It means that the feet were the only part of man that was physically perceptible at the time when certain forms were left behind which swam about like fish in the water-earth. The remaining parts were present only in a finer etheric form. What we have described as the chalice or blossom form, the light-organ, was entirely etheric, an illuminated air-form. Only the lowest part of man was able really to wade through the water-earth like the fish that had remained behind.
- Thereafter there were higher animals, which are depicted in the image of the Water-man, the man whose body was visible as high as the shanks. Man has been formed in such a way as to leave behind him, at every stage of his existence, certain animal forms, beyond which he slowly progressed. When the moon began to withdraw, man was so far along that he had given his lower half, his lower nature, a physical shape, whereas the upper half remained entirely pliable. Then, we see taking hold, from the moon, that influence of the moonlight which the Egyptians called Osiris, which can work upon man through the different aspects of the moon. We see how the most important formations of the upper body, i.e., the nerves that bring about the present upper body, are worked into man from the moon. The nerves, going out from the spine, formed the upper body. At first, through the tones that Osiris-Apollo played on the human lyre, the mid-part, the hip-region, comes into form. All that had to remain stuck at this point, beyond which man progressed, appears in later evolution in the forms of the amphibians.
- **As long as the moon was connected with the earth, it more or less pushed man's evolution down.** The fish form was still connected with the sun, which is the reason for the feeling that every healthy person today has toward fish. Think of the pleasure of seeing a beautiful glittering fish, a shining water-animal, and then think of the antipathy one feels toward a frog, toad, or snake, although these stand higher than the fish. The forms of that time appear in their decadence as the present amphibians, but man once had such forms in his lower corporeality. As long as man had only a lower corporeality to the hips, he was a sort of dragon. It was only later, when the upper body assumed solid form, that by use of this he transformed the lower. We may say that the fish reflects the form that man possessed through the forces he received while the sun was still united with the earth. Until the sun departed, man stood at the level of the fish.
- - See more at: <http://wn.rsarchive.org/Lectures/GA106/English/AP1971/19080910p01.html#sthash.d4BYwBQU.dpuf>



EGYPTIAN MYTHS AND MYSTERIES

- Now the great beings, the leaders of evolution, departed as they shaped their sun, to reunite with the earth only at a much later time. One of the Spirits, one who went out with the sun, the highest of the guiding Sun Spirits, was the Christ. We feel a deep reverence when we realize that up to this time man was united with this Being who, as the noblest spirit, once departed from the earth with the sun. One felt that through the form of the fish one could characterize the time of the sun's departure from the earth, and also the forms given through the Christ himself. Earlier, man on earth was united with the sun, and as the latter departed he saw, preserved in the fish-shape, the form that he owed to the sun spirits. As he progressed further, the sun spirits were no longer with him. The Christ departed from the earth when man still had the fish-shape. The initiates of the first Christian period preserved this form. In the Roman catacombs the fish appeared as the symbol of Christ, to remind men of the great cosmic event in evolution when the Christ was still united with them in the earth. Man had progressed to the fish-form when the sun split off, and the first Christians felt a reference to the Man-Christ-form in the fish symbol as something of great profundity. Such a significant sign, which we view as a symbol of an epoch of cosmic evolution, is far removed from the external explanations that are often given. The true symbols refer to higher spiritual realities. They did not merely "mean" something to the early Christians. Such a symbol is a picture of this or that which one can really see in the spiritual world, and no symbol is rightly interpreted unless one can point to what can be seen in the spiritual world in connection with it. All speculation is at most preparatory, and the expression "it means" does not touch the point; for one first really understands the symbol when one shows how a spiritual fact is portrayed in it.
- - See more at: <http://wn.rsarchive.org/Lectures/GA106/English/AP1971/19080910p01.html#sthash.d4BYwBQU.dpuf>
- Now let us proceed further with the evolution of humanity. Man took on the most diverse forms, and when he had developed upward to the hip-level he was at his ugliest in his physical form. The shape he then had is preserved in a decadent form in the snake. The time when man had reached the amphibian form, when the moon was still in the earth, is the time of shame and degeneracy in the evolution of mankind. **Had the moon not then departed from the earth, the race of men would have succumbed to a horrible fate, failing increasingly into evil forms.** Hence the feeling that the naive and unspoiled person has toward the snake, which retains the form that man had at his lowest point, is entirely justified. Precisely the unspoiled soul-attitude, which does not assert that there is nothing ugly in nature, feels a revulsion before the snake, because it is the document of human shame. This is not meant in a moral sense, but points to the lowest stage in human evolution.
- Man had now to pass beyond this low point. He could do this only by abandoning the animal form and beginning to condense his spiritual upper part. We have seen that all the nobler parts could develop only through the intervention of the Isis and Osiris forces. In order for the Osiris forces to work in him, in order for the nobler part to develop, something important was necessary. Man's upper part had to find the possibility of bringing the spine out of the horizontal into the vertical. All this occurred through the influence of Isis and Osiris. Man was led from stage to stage by sun and moon, which kept themselves in balance. When half of man had become physical, **sun and moon were in balance**; therefore the hip region is designated as the Balance. At that time the sun was in the sign of the Balance.
- - See more at: <http://wn.rsarchive.org/Lectures/GA106/English/AP1971/19080910p01.html#sthash.d4BYwBQU.dpuf>



RAPHAEL, JOHN THE BAPTIST, ELIJAH

- Bearing this in mind, let us look for a moment at Raphael and see how he passes through the gate of death, and how he enters the realm of the starry worlds, the realm of spiritual evolution, taking with him the power of his art, which already on earth shone with the bright light of the stars. We behold, my dear friends, how Raphael enters the Moon sphere, and we see how he comes into association here with the Spirits who live in the Moon sphere and **who are the spiritual Individualities of the great original Leaders of mankind**, with whose wisdom Raphael, as Elijah, had been deeply inspired. He meets these **Moon Beings**, and he meets too all the souls with whom he has lived in earlier stages of Earth-evolution. We see how he unites himself spiritually with the spiritual origin of the Earth, with that World of Being which first made it possible for man to be, and for the Earthly to be impregnated with the Divine. We behold Raphael as it were completely “at home”, united with those with whom he had most loved to be in the Elijah existence, inasmuch as it was They who at the beginning of Earth existence set the goal for the life on this Earth. – R. Steiner, *Last Address*, GA 238