



# THE ROLE OF TECHNOLOGY IN HUMAN EVOLUTION

Exploring The Western Path



**Toronto**

*Andrew Linnell*

[jandrewlinnell@yahoo.com](mailto:jandrewlinnell@yahoo.com)

[www.thechristianmysteries.com](http://www.thechristianmysteries.com)

4/29/2016

[Technology in Human Evolution](#)



# LECTURE 1 RECAP

- Cosmic Evolution – Jupiter,
- Devolution,
- Ahriman's Incarnation,
- Prep For The Future,
- Singularity,
- AI,
- Merging With Machines



# SCHEDULE

[www.thechristianmysteries.com](http://www.thechristianmysteries.com)

## April 28, 2016 Lecture 1

- 19:30 – 21:00 Merging with Machines – The Path to Jupiter?

## April 29, 2016 Lecture 2

- 19:00 – 21:00 **Sexuality and Technology – Preparations for the Remaining Post-Atlantean Ages**

## April 30, 2016 Workshop

- 09:30-10:00 Registration, social time, tea/coffee
- 10:00-11:30 Sexbots; Hephaestus; preparations for our time
- 11:30-12:30 Experiencing Rhythm Through Eurythmy: In Tune With Sound, Soul, And Creating
- 12:30-01:30 Lunch (BYO) together
- 01:30-03:00 Electricity & evil, EMR, sensitivity & safety, resonance, rhythms, robotics, and life
- 03:00-03:30 Break tea/coffee
- 03:30-04:00 Eurythmy exercises and tools for balancing technical work
- 04:00-05:00 Artificial intelligence, artificial soul; consciousness soul development, a path to “future Jupiter” and concluding remarks

# THE STARS ONCE SPOKE TO MAN

The Stars once spoke to Man.  
It is World-destiny  
That they are silent now.  
To be aware of the silence  
Can become pain for earthly Man.

But in the deepening silence  
There grows and ripens  
**What Man speaks to the Stars.**  
To be aware of the speaking  
Can become strength for Spirit-Man.

Rudolf Steiner



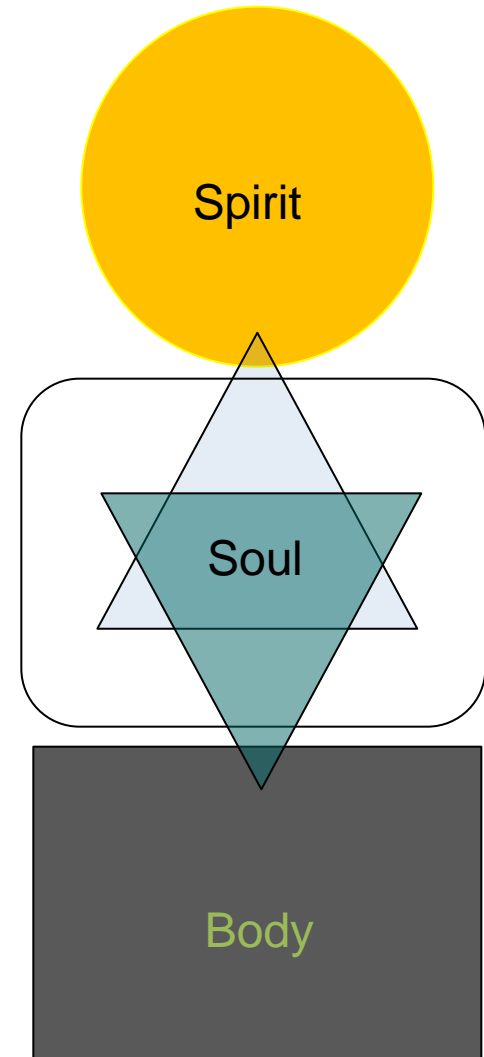


# ROSICRUCIAN BASIS TO OUR WORK

- For the Rosicrucian, it was much more difficult than for any similar movement of an earlier period, because their initial activity in the 13<sup>th</sup> and 14<sup>th</sup> centuries took place at the time when materialism was approaching strongly
  - **All modern achievements such as steam engines, telegraphy and so on were bound to place human beings firmly on the physical plane**
  - Obligated to work for an era when men's thinking would be guided by mathematical principles
  - Obligated to make their preparations with this in view and hence were entirely misunderstood
- One cannot be informed about Rosicrucianism by what is said about it in public
  - **Nothing of what was cultivated in true Rosicrucianism is to be found in literature**
  - The deepest spiritual truths cultivated by the Rosicrucians were interpreted in such a mistaken way as to suggest that spiritual phenomena can be produced in alchemists' cellars with the help of retorts and so forth!
- This conception of **alchemy** gave rise to the materialistic caricature of Rosicrucianism that is presented in literature today
  - The task of the Rosicrucians was to formulate a science by means of which they would be able to let their wisdom flow gradually into the world
- When **we present spiritual science to people today** it must be **Rosicrucian**
  - By using an older terminology we could win over a certain number of people, but they would necessarily be individuals connected with every fiber of their being with the modern world and its culture
- Spiritual science wishes to take modern life and its forms of expression seriously
  - **We must accept our epoch as it actually is but endeavor to influence it spiritually**
    - Source: R. Steiner, GA109

# BODY, SOUL, AND SPIRIT

- Soma
- Psyche
- Pneuma



# JANUS FACE



1. Polarian
2. Hyperborean
3. Lemurian

4. Atlantean ← What did we look here?

## 5. Post-Atlantean Cultural Ages

1. Indian
2. Persian
3. Egyptian
4. Greek/Roman

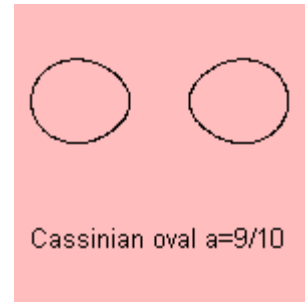
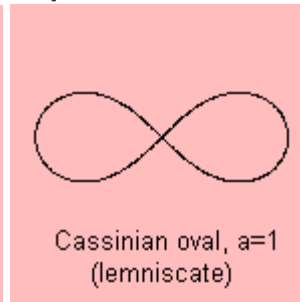
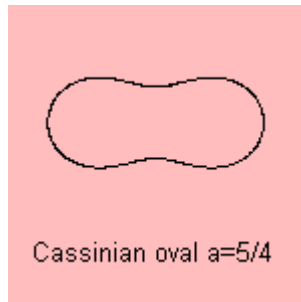
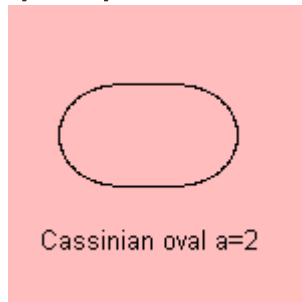
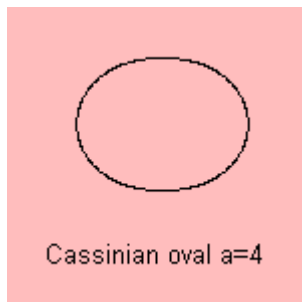
5. 5<sup>th</sup> ← You are here
6. 6<sup>th</sup> Russian
7. 7<sup>th</sup> American

6. Sixth Epoch ← What will we look like here?

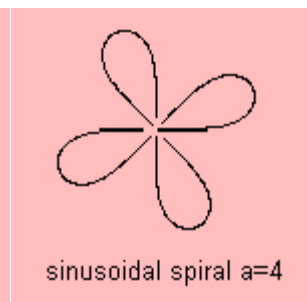
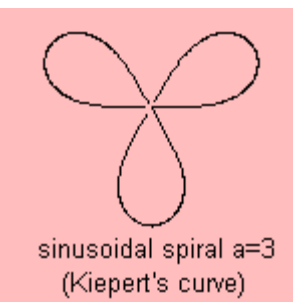
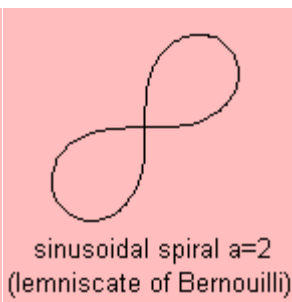
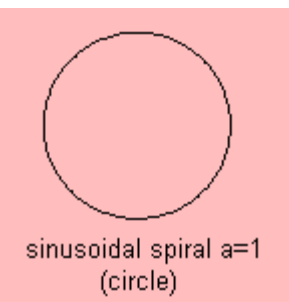
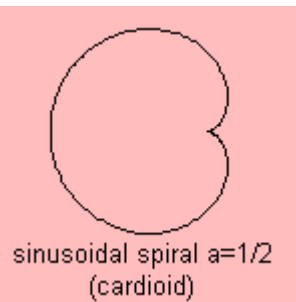
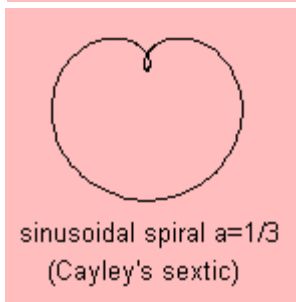
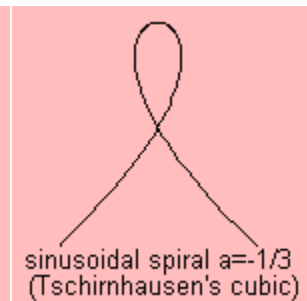
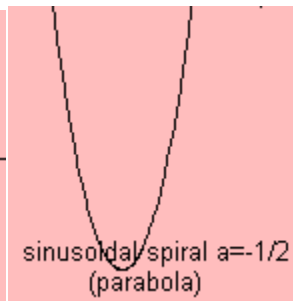
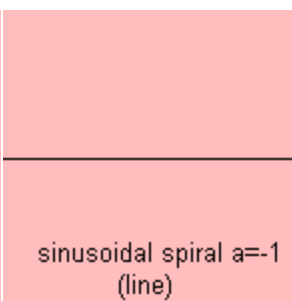
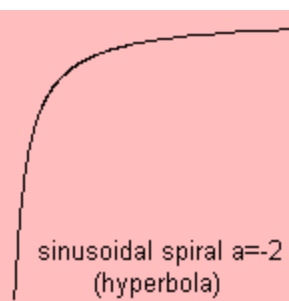
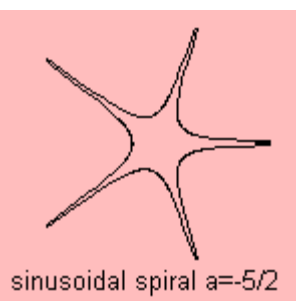
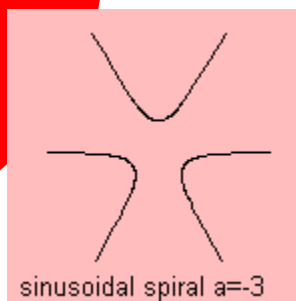
7. Seventh Epoch

# CURVES OF CASSINI & SINUSOIDAL SPIRAL

- Let  $p$  be a point on the curve
- Let there be two fixed points  $q$  and  $r$
- Distance from  $q$  to  $p$  times distance from  $r$  to  $p = a^2$

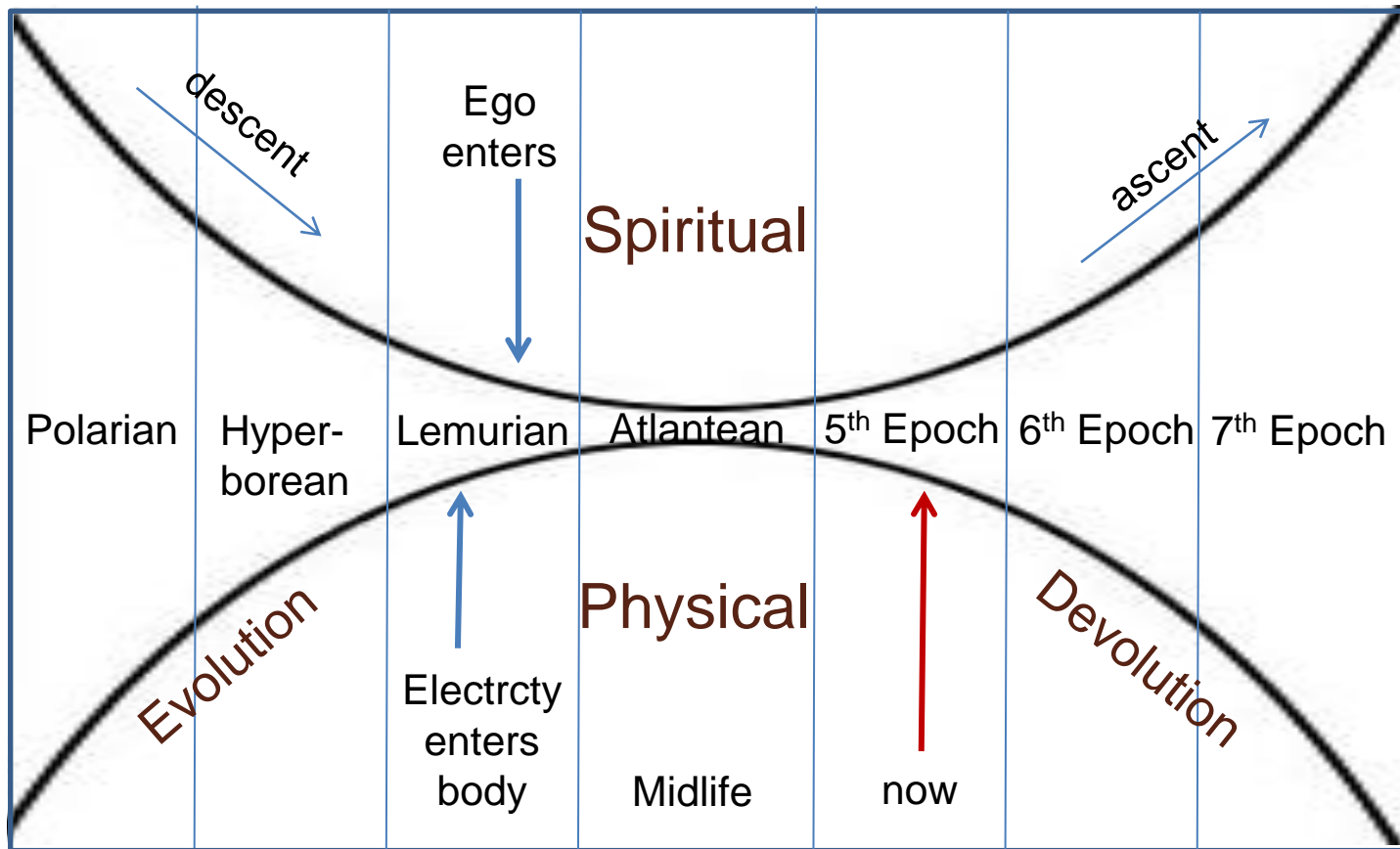


- Now look at radius<sup>a</sup> =  $\sin(a \cdot \Phi)$





# "DUALIST'S" EVOLUTION-DEVOLUTION



# BRIEF HISTORY OF COMPUTING



- 1833: Charles Babbage, mechanical computer
  - Unable to build it because Ahriman not yet present on earth
- 1879: Michael throws down Ahriman to earth
  - He enters human brain-thinking & physical+subnature earth
  - Edison makes first successful lightbulb, (direct vs alternating)
- 1880: Hollerith invents punched card & tabulator – IBM
- 1935: John Atanasoff built first fully electronic computer
  - Autobio: “tormented ... car at high speed ... cold ... alcohol”<sup>1</sup>
- 1945: Mauchly, Eckert, and von Neumann with funds from the military for ballistic calculations – ENIAC
- 1959: **Women enter:** Grace Hopper machine-independent programming languages, compilers, COBOL

<sup>1</sup>See David Black article in *Anthroposophy in New England*, Christmas, 1982

# MOON ROCKS



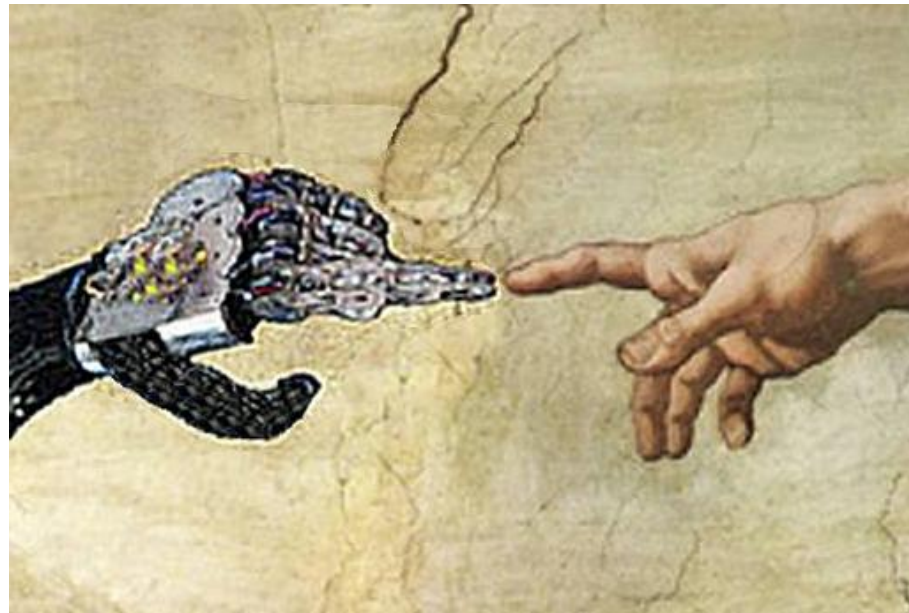
- Sources:
  1. Apollo manned lunar landings
  2. Luna (RU) unmanned probes
  3. Lunar meteorites ejected naturally
- Radiometric dating:
  - Moon 3.16 B – 4.5 B years old
  - Earth rocks 3.8 to 4.28 B years old
- “We don’t see any difference between Earth’s and the Moon’s oxygen isotopes; they’re indistinguishable,” researcher Edward Young [said](#)
- If homeopathy works, what effect from these rocks?
  - Many of the presentation moon rocks are now unaccounted for

<u>Mission</u>	<u>Mass Returned</u>	<u>Year</u>
<a href="#"><u>Apollo 11</u></a>	21.55 kg (47.51 lb)	1969
<a href="#"><u>Apollo 12</u></a>	34.30 kg (75.62 lb)	1969
<a href="#"><u>Apollo 14</u></a>	42.80 kg (94.35 lb)	1971
<a href="#"><u>Apollo 15</u></a>	76.70 kg (169.10 lb)	1971
<a href="#"><u>Apollo 16</u></a>	95.20 kg (209.89 lb)	1972
<a href="#"><u>Apollo 17</u></a>	110.40 kg (243.40 lb)	1972
<a href="#"><u>Luna 16</u></a>	101 g (3.6 oz)	1970
<a href="#"><u>Luna 20</u></a>	55 g (1.9 oz)	1972
<a href="#"><u>Luna 24</u></a>	170 g (6.0 oz)	1976

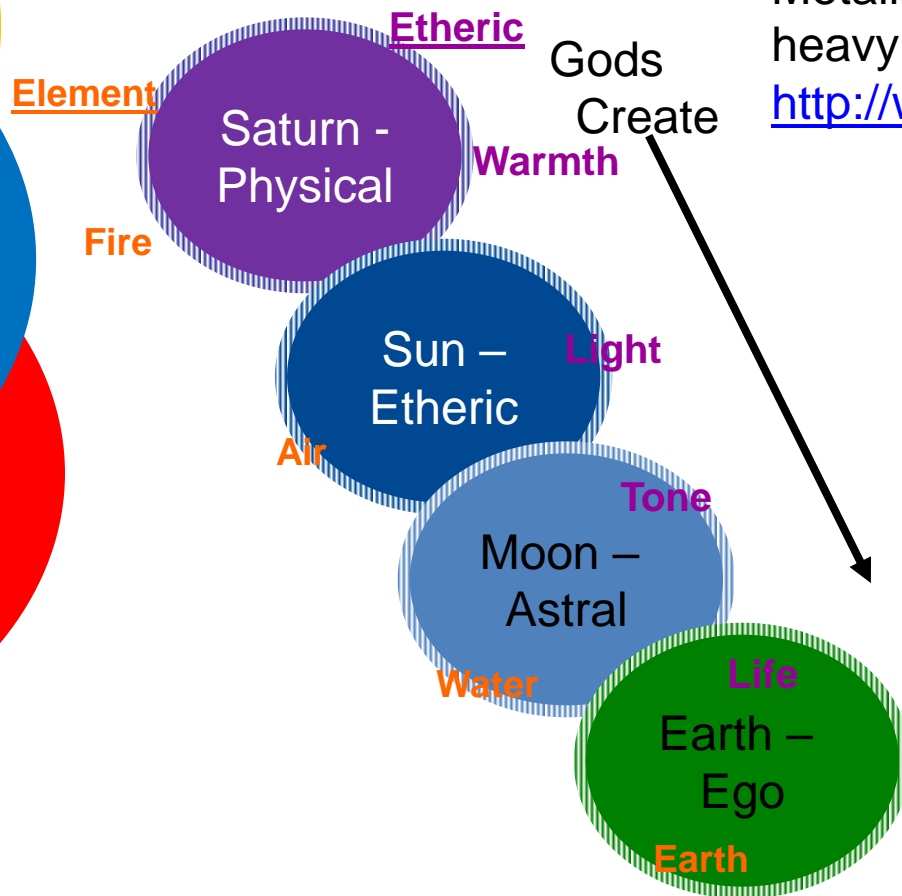


# THE RETURN OF THE MOON

And the Coming Infertility of Women



# FIRST 4 STAGES OF HUMAN CONDITION



Metallicity: 3 prior solar systems to have heavy metals. See:

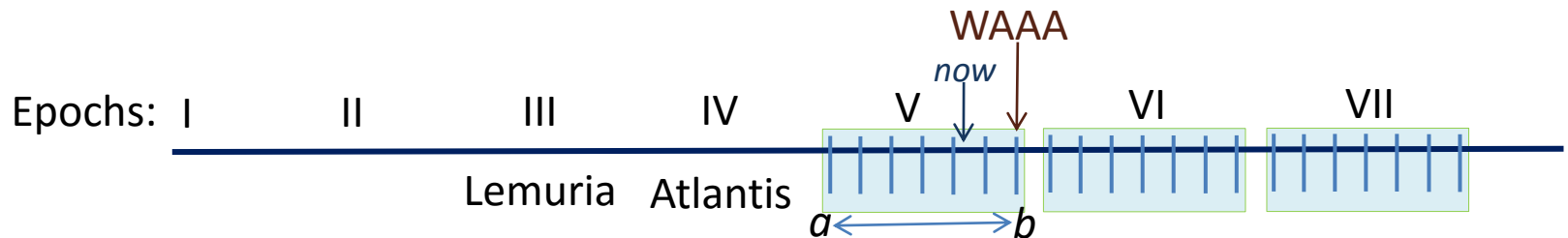
<http://www.eso.org/public/usa/news/eso0129/>

‘sun’ and ‘moon’ separate

Recapitulation: ‘sun’ separates from ‘earth-moon’ then moon separates during Lemuria

# SEVEN EPOCHS WITHIN EARTH-CONDITION

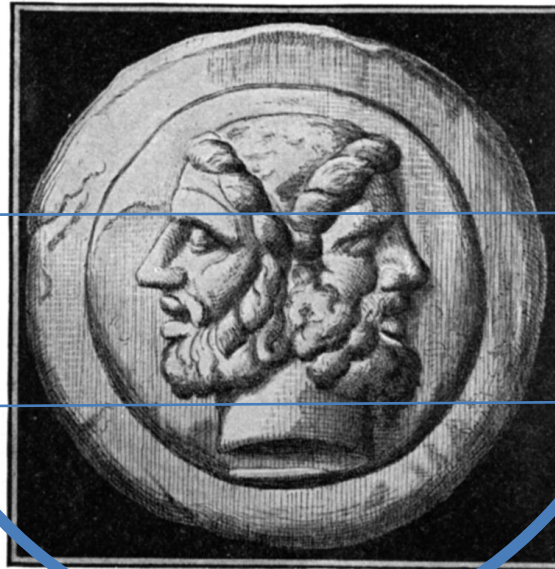
- “In the **seventh epoch** of civilization, this War of All Against All will break out in the most terrible form.
- “Great and mighty forces will be let loose by the discoveries, turning the whole earth-globe into a kind of [self-functioning] live **electric mass**.
- “In a way that cannot be discussed, a tiny handful will be protected and preserved.”
- R. Steiner, *The Atom as Coagulated Electricity*, GA 93, 24 Dec. 1904



# FULFILLMENT OF CULTURAL AGES

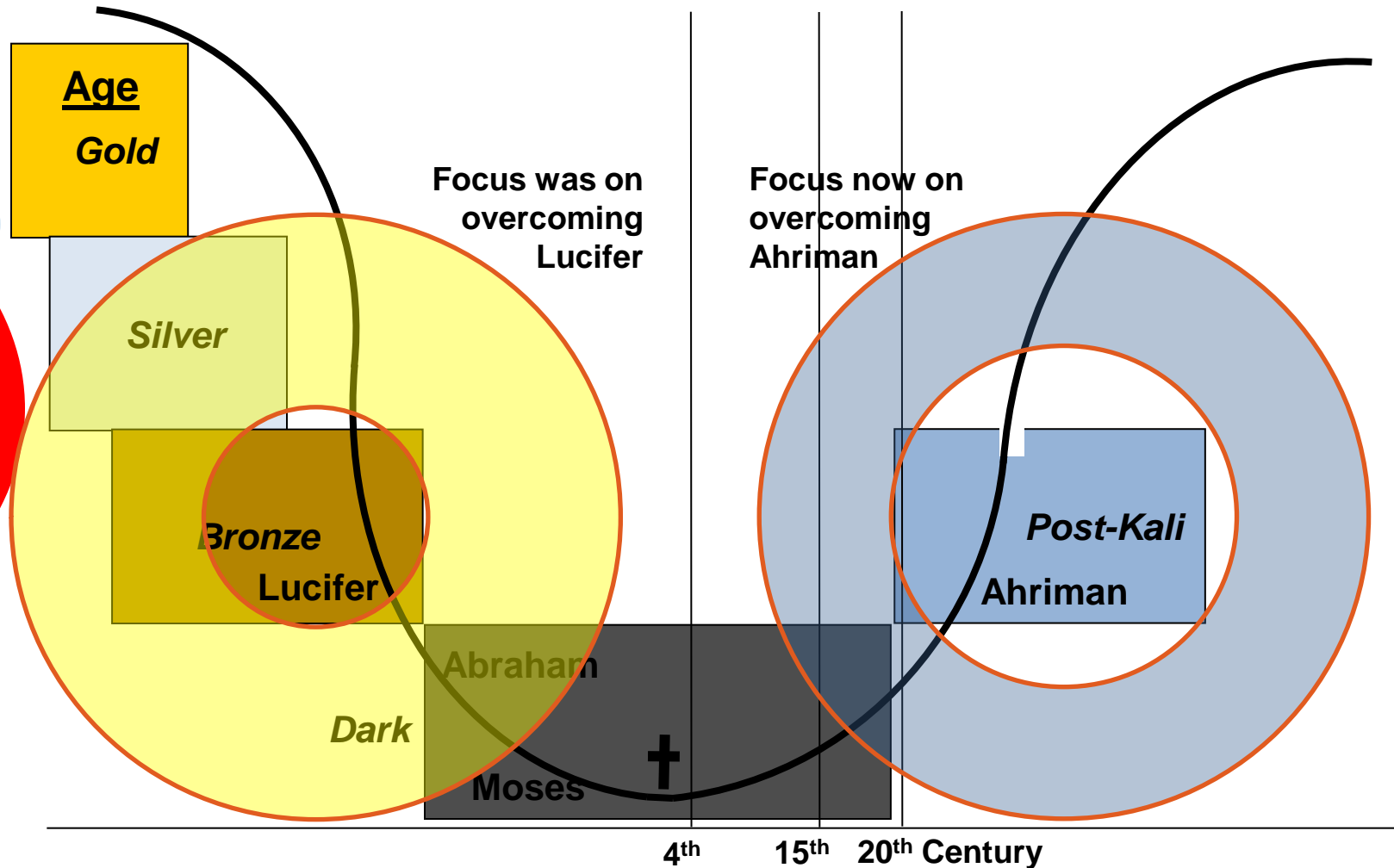
- “The Third PACA [Egypto-Chaldean] reappears in the Fifth, in order to permeate human souls with what the Fourth PACA has brought as something completely new
- Something similar will be the case with the Sixth PACA in regard to the Second, and the Seventh in regard to the First, the ancient Indian PACA”

R. Steiner, *Occult Science, The Present And Future Of Cosmic And Human Evolution*



Janus Face

# POST ATLANTEAN HISTORICAL PICTURE PENDULUM







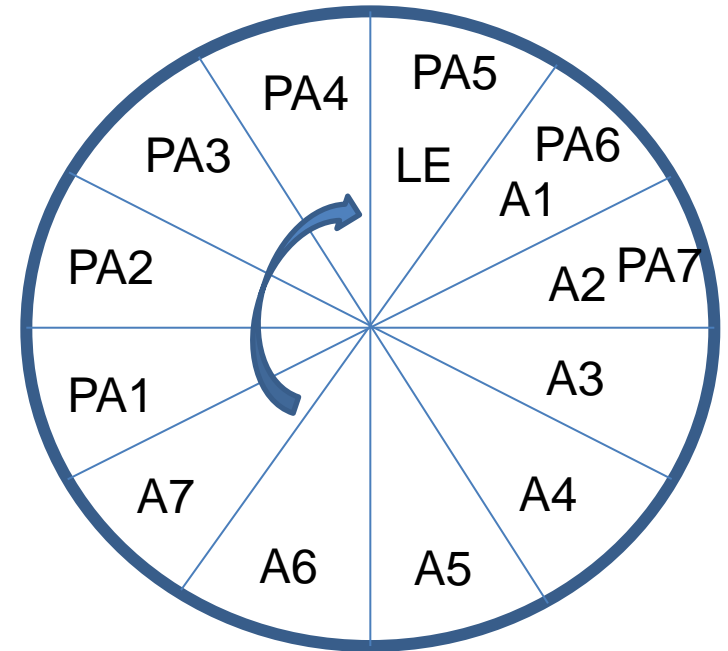
# FUTURE CULTURAL AGES AND EPOCHS

- 6<sup>th</sup> PACA (Russian) survivors will found civilization after WAA
  - Founds the civilization in Revelations called the 7 Seals
    - As the 5<sup>th</sup> Atlantean race founded the PA cultures, so the 6<sup>th</sup>, not 7<sup>th</sup>
    - Western Path: Taking on Evil (Mission of Mani)
- 6<sup>th</sup> Epoch: Will live in a **Descended** Astral World (7 Seals)
  - Current images, expressions, manifestations
  - Unable to hide anything
    - Show good and evil in their faces – *but what will be our face?*
    - Evil man will express his evil, a good man will express the good
- 7<sup>th</sup> Epoch: Will live in a **Descended** Devachan (Heavenly)
  - Impossible to hide what is in one's soul even in speech
    - Thought no longer remains dumb – becomes Word
  - Goal: All earthly beings become an astral heavenly body
    - Physical substance will be 'dissolved' as Archai achieve Atma
    - Countenance and words of beings as expression of Christ

Rudolf Steiner, *The Apocalypse of St. John*, Lectures on the Book of Revelation, 12 lectures from 17 to 30 June 1908

# PLASTICITY OF BODY AND SOUL BY AGE

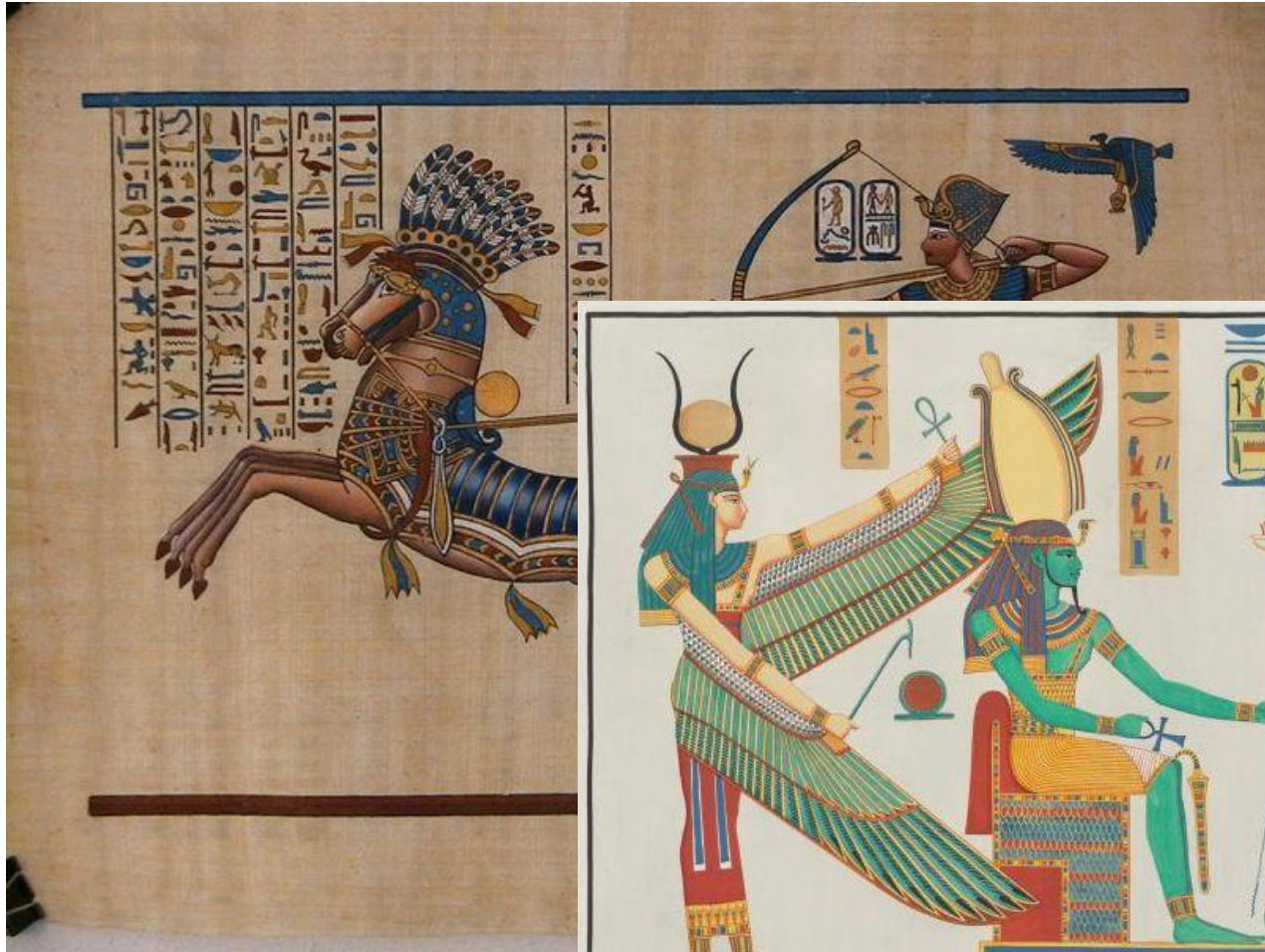
- Lemuria [D.]
- Atlantis
- Post-Atlantean
- I. 56 49
- II. 49 42
- III. 42 35
- IV. 35 28 33 – Christ
- 1879 V. 28 21 Today 27
- VI. 21 14 Year 4,000
- VII. 14 7 Year 7,000 – women become infertile
- [D.] Year 8,000 – moon returns



Each pie slice  
represents  
~2160 years

# EGYPT: NOT MY THINKING BUT INTO ME

Was Free Willed-Thinking Possible? Not Yet!



# EVOLUTION OF CONSCIOUS AWARENESS

*Not to scale*

Spiritual world full of beings

Sentient Soul 3<sup>rd</sup> M BC

Ancient Mysteries

Intellectual Soul 8<sup>th</sup> C BC



End of the "Earth" (4<sup>th</sup> C)

Materialism →

1413 5<sup>th</sup> PA Age

Consciousness Soul

Jesus was just a good man

Who needs religion anyway?

He who you seek is no longer here!

8<sup>th</sup> M Moon returns

American Cultural Age

7<sup>th</sup> M Women are infertile

5733 End of 6<sup>th</sup> PA Age

Russian Cultural Age

3573 End of 5<sup>th</sup> PA Age

End of 20<sup>th</sup> C Meeting with  
Sp. Beings

What happens to our  
bodies?



# ENDING OF PHYSICAL BODIES

- “In a time not all that far ahead, possibly as early as the seventh millennium, all women will be infertile on earth
  - Due, in part, to the **withering and crumbling of human bodies**
  - The fact is that women will no longer be able to have children, even before the earth has gone through all its stages
- If the **relationships** that can only come into their own between the **inner life & the physical body** were to continue unchanged, people would ***no longer find anything to do on earth***
  - Human beings therefore have to find a different way of relating to **earthly existence** – the **final stages of earth evolution** will make it necessary for them to do without physical bodies and yet be present on earth”
- AL: Thus, the relationship between the inner life & the physical body must change, must find new *rhythm*-connection

R. Steiner, *Fall of the Spirits of Darkness*, lecture 5, 7Oct1917, GA 177



# THIS IS A LONG WAY OFF, RIGHT?

- How many more incarnations left (*to resolve my karma*)?
  - 100s?
  - 1000s?  $((6400-2015) / 2160) * 3 = 6 !$
- **Now non-human beings are descending** (since 1880) to earth from other planets
  - For example: the Great Teachers of Humanity from the Moon
  - They depend on entering into human **relationship** to further their own existence – found in one's **inner life**
  - Spiritual Science arises through the help of these beings
- **More and more of such beings** will move among us
  - **We need to understand them**, they will aid us
  - Transform our 'shadowy' intellect to living thinking → Imagination





# PROCREATION IN 6<sup>TH</sup> AND 7<sup>TH</sup> PA AGES

- In the sixth Post-Atlantean Age of civilization, the human fertility which depends on the powers of light for its impulses will gradually come to an end
  - The **powers of darkness will have to intervene** so that the affair may continue for a time
- We know the seeds for the **sixth Post-Atlantean Age** of civilization lie in the **East of Europe**
  - The East of Europe will develop powerful tendencies which do not allow physical human reproduction to continue beyond the sixth period of civilization but, instead, let the earth enter into a form of **existence in soul and spirit**
- The other impulses for the **seventh Post-Atlantean Age** of civilization, in which procreation will be guided by impulses from the **cast-down Angels**, will come from **America**
  - What kind of bodies are these?

R. Steiner, *Fall of the Spirits of Darkness*, lecture 14, 28Oct1917, GA 177

# WHAT WILL LIFE BE LIKE IN THE 8<sup>TH</sup> MILLENIUM?

- Women will already be infertile
  - Without procreation, will today's physical body cease to exist?
  - Or will all babies be “test tube” babies?
- Moon will recombine with Earth
  - Forces & beings (physical life, as we know it, will not be possible)
- Our thoughts today become the earth's new reality
  - What has no reality today will become reality then
  - Because we can think only of the material:
  - **New beings** between mineral and plant kingdoms
    - Resemble automatons
    - Over abundant intelligence
    - Connected network like spiders







# REPLACING THE PHYSICAL FORM OF BIRTH

- “With this kind of science we can only learn about the part of man's being which has a significance **from the time of the separation of the moon until its return**, when the shadowy thoughts of modern times will become spidery creatures having a concrete existence.
- A form of knowledge must develop which produces quite a different conception of the being of man, and it can be developed only by **raising science to the level of artistic perception**.
  - We shall realize then that science as it is today is capable of **grasping only the mineral nature**, whether in the mineral kingdom itself or in the kingdoms of plant, animal and man.
- Even when applied to the plant kingdom, **science must become a form of art**, and still more so in the case of the animal kingdom.
- To think that the form and structure of an animal can be understood by the means employed by anatomists and physiologists is nonsense.
  - And so long as we fail to realize that it is nonsense, the shadowy intellect cannot be transformed into a living, spiritual comprehension of the world.
  - What is taught to young students today in so abstract a form in the universities must be transformed and must lead to a really artistic conception of the world.
- For the world of Nature itself creates as an artist. And until we realize that Nature is a world of creative art which can be understood only through artistic feeling, no healing will come into our picture of the world. ... they are taught only about the mineral structure in man, about that part of his being which **will one day be woven into the network of spider-like creatures extending over the earth**. ...
  - Source: R. Steiner, *A Picture of Earth-Evolution in the Future*, Dornach, 13May1921, GA204



# REPLACING THE PHYSICAL FORM OF BIRTH

- **“His birth from woman began with the departure of the moon, but this physical form of birth is only a passing episode in the great sweep of cosmic evolution and will be replaced by another. ...**
- The human will is threatened with being deprived of spiritual impulses and with becoming involved in the spidery web that will creep over the earth.
- There are men in existence who imagine that they will gain their ends by promoting their own spiritual development and leaving the rest of their fellow-beings in a state of ignorance.
- But the vast majority live in complete unawareness of the terrible destiny that awaits them if they lend themselves to what an ancient form of spiritual knowledge called the “sixteen paths to corruption.”
  - For just as there are many ways in which the shadowy intellect may be directed to the impulses and knowledge coming from the spiritual world, so naturally there are many ways in which varieties of the shadowy intellect will be able to unite with the spider-beings who will spin their web over the earth in times to come.
  - Intellect will then be objectivised in the very limbs and tentacles of these spidery creatures, who in all their wonderful inter-weavings and caduceus-like convolutions will present an amazing network of intricate forms.
- **It is only by developing an inner understanding for what is truly artistic that man will be able to understand the realm that is higher than mineral existence — that realm of which we see an expression in the actual shaping and form of the surfaces of things in the world.”**
  - Source: R. Steiner, *A Picture of Earth-Evolution in the Future*, Dornach, 13May1921, GA204



# PREPARATION FOR MOON'S RETURN

- “To cultivate Spiritual Science means to open the doors to those **influences from beyond the earth** which have been seeking to come down to the earth since the last third of the nineteenth century
  - Cultivation of Spiritual Science is in very truth a cosmic event of which we ought to be fully conscious
- We survey the whole span of time from **the separation until the return of the moon**
  - The moon which reflects the sunlight back to us, is in truth deeply connected with our existence
  - **It separated itself from the earth in order that man might become a free being. But this period of time must be utilized by man in such a way that he does not prepare the material which, with the re-entry of the moon into the earth-sphere, would combine with the moon-substance to produce that new kingdom of which I have tried to give you a graphic picture**
- Now and then there arises in human beings of our time a kind of foreboding of what will come about in the future
- In the picture of his valley of death, in Nietzsche's imagination, there was a subconscious **vision of the future**, and within this valley of death he placed the figure of the ‘ugliest man’
  - It was a kind of foreboding of what will happen if men continue to cultivate shadowy thoughts
- For their destiny then will be that in hideous shape they will be caught up by the forces of the moon-existence as it comes down into the sphere of the earth and will **become one with the brood of spidery creatures of which I have been speaking**
- - Source: R. Steiner, *A Picture of Earth-Evolution in the Future*, Dornach, 13May1921, GA204



# OUR CONNECTION WITH EARTH CHANGES

- **“We know that some day the Moon will re-unite with the Earth**
- **This is known by abstract astronomy and other sciences, but they push the time far into the future — it is however really not very far off**
- In the course of evolution humanity is becoming younger and younger and retains the power of evolving in body and soul to a definite age. In ancient India man retained plasticity up to the age of 56. At the time of Golgotha to the age of 33; now, to the age of 27. In the 6th post-Atlantean epoch it will be to the age of 21-14 in the 7th epoch, 14-7.
- **Woman will cease to be fertile, another mode of entering earthly life will take place when the Moon re-unites with the Earth, in 8,000 A.D.**
- **The re-uniting of the Moon with the Earth will be of great significance; *we shall be connected with the Earth differently***
  - R. Steiner, *Evolution of Human Freedom and Personal Consciousness*, Dusseldorf, 19Jan1905 (no GA)



# SUPER-EARTHLY BEINGS TO THE RESCUE

- The intellect will become more and more shadowy
- If man does not resolve to absorb what is to descend from the spiritual world, he will pass completely over to the shadowy side of his intellect
  - The intellect is now only able to understand the mineral kingdom, it cannot penetrate to the human being
  - Plant life is a deep riddle to it, animal life is more so, human life is completely opaque
- The formation of images devoid of reality will continue unless man resolves to develop imagination
  - If he does this the shadowy pictures will be re-animated by Spiritual Science, and become not merely human events but cosmic as well
- We read in “[Occult Science](#)” that human souls at one time left the earth for other planets and later returned to earth existence
  - In turn those from Mars, Jupiter and the other planets returned to the earth
  - R. Steiner, *Evolution of Human Freedom and Personal Consciousness*, Dusseldorf, 19Jan1905 (no GA)



# SUPER-EARTHLY BEINGS TO THE RESCUE

- All these events are substantiated by investigations of the spiritual world and in this connection we find an extremely significant event in the 7th decade of the 19th C
  - **Man returned to earth from the other planets *up to 1879***
  - Since then other beings from foreign cosmic regions enter into relation with earthly man
- In Atlantis man was the last being to enter the earth; since 1879 Vulcan beings descend into earthly evolution
  - They are the first, Super-earthly Beings to bring messages; to them we owe Spiritual Science
- The human race does not welcome these Beings, as a whole it ignores them
  - This will bring the Earth into a tragic condition ultimately
- They will continue to descend, but man will **not understand their speech except by understanding Spiritual Science which should transform the social environment**
  - **These Vulcan Beings, from between the Moon and Mercury, are trying to obtain a foothold in earthly existence**
- **They seek to be the fore-runners of the end of the earth and the return of the moon**
  - Our shadowy intellectual understanding must be re-animated by Spiritual Science
- Shock after shock will arise and the earth will dissolve into chaos if these Beings meet with opposition from humanity
  - R. Steiner, *Evolution of Human Freedom and Personal Consciousness*, Dusseldorf, 19Jan1905 (no GA)



# DRAMA AT THE FOUNDATION MEETING

- “The fortunate one for the progress of the Movement has actually come about. It may now be said that ever since the new Foundation of the Anthroposophical Society at the Goetheanum last Christmas, **those Spiritual Powers from whom our revelations are received have showered upon us even greater grace than before**” (published in “Appendix” in *Cosmic Christianity and the Impulse of Michael*; 1953).



# RAPHAEL, JOHN THE BAPTIST, ELIJAH

- Bearing this in mind, let us look for a moment at Raphael and see how he passes through the gate of death, and how he enters the realm of the starry worlds, the realm of spiritual evolution, taking with him the power of his art, which already on earth shone with the bright light of the stars. We behold, my dear friends, how Raphael enters the Moon sphere, and we see how he comes into association here with the Spirits who live in the Moon sphere and **who are the spiritual Individualities of the great original Leaders of mankind**, with whose wisdom Raphael, as Elijah, had been deeply inspired. He meets these **Moon Beings**, and he meets too all the souls with whom he has lived in earlier stages of Earth-evolution. We see how he unites himself spiritually with the spiritual origin of the Earth, with that World of Being which first made it possible for man to be, and for the Earthly to be impregnated with the Divine. We behold Raphael as it were completely “at home”, united with those with whom he had most loved to be in the Elijah existence, inasmuch as it was They who at the beginning of Earth existence set the goal for the life on this Earth. – R. Steiner, Last Address, GA 238





# EGYPTIAN MYTHS AND MYSTERIES

- In the earliest times, when the sun departed, no animal forms had yet appeared. After the sun had left, the highest form of animal was a type that stood at the level of our present fish. When we say that the human feet corresponded to this fish-form, when we look at the feet in connection with fish, what does this mean? It means that the feet were the only part of man that was physically perceptible at the time when certain forms were left behind which swam about like fish in the water-earth. The remaining parts were present only in a finer etheric form. What we have described as the chalice or blossom form, the light-organ, was entirely etheric, an illuminated air-form. Only the lowest part of man was able really to wade through the water-earth like the fish that had remained behind.
- Thereafter there were higher animals, which are depicted in the image of the Water-man, the man whose body was visible as high as the shanks. Man has been formed in such a way as to leave behind him, at every stage of his existence, certain animal forms, beyond which he slowly progressed. When the moon began to withdraw, man was so far along that he had given his lower half, his lower nature, a physical shape, whereas the upper half remained entirely pliable. Then, we see taking hold, from the moon, that influence of the moonlight which the Egyptians called Osiris, which can work upon man through the different aspects of the moon. We see how the most important formations of the upper body, i.e., the nerves that bring about the present upper body, are worked into man from the moon. The nerves, going out from the spine, formed the upper body. At first, through the tones that Osiris-Apollo played on the human lyre, the mid-part, the hip-region, comes into form. All that had to remain stuck at this point, beyond which man progressed, appears in later evolution in the forms of the amphibians.
- **As long as the moon was connected with the earth, it more or less pushed man's evolution down.** The fish form was still connected with the sun, which is the reason for the feeling that every healthy person today has toward fish. Think of the pleasure of seeing a beautiful glittering fish, a shining water-animal, and then think of the antipathy one feels toward a frog, toad, or snake, although these stand higher than the fish. The forms of that time appear in their decadence as the present amphibians, but man once had such forms in his lower corporeality. As long as man had only a lower corporeality to the hips, he was a sort of dragon. It was only later, when the upper body assumed solid form, that by use of this he transformed the lower. We may say that the fish reflects the form that man possessed through the forces he received while the sun was still united with the earth. Until the sun departed, man stood at the level of the fish.
- - See more at: <http://wn.rsarchive.org/Lectures/GA106/English/AP1971/19080910p01.html#sthash.d4BYwBQU.dpuf>



# EGYPTIAN MYTHS AND MYSTERIES

- Now the great beings, the leaders of evolution, departed as they shaped their sun, to reunite with the earth only at a much later time. One of the Spirits, one who went out with the sun, the highest of the guiding Sun Spirits, was the Christ. We feel a deep reverence when we realize that up to this time man was united with this Being who, as the noblest spirit, once departed from the earth with the sun. One felt that through the form of the fish one could characterize the time of the sun's departure from the earth, and also the forms given through the Christ himself. Earlier, man on earth was united with the sun, and as the latter departed he saw, preserved in the fish-shape, the form that he owed to the sun spirits. As he progressed further, the sun spirits were no longer with him. The Christ departed from the earth when man still had the fish-shape. The initiates of the first Christian period preserved this form. In the Roman catacombs the fish appeared as the symbol of Christ, to remind men of the great cosmic event in evolution when the Christ was still united with them in the earth. Man had progressed to the fish-form when the sun split off, and the first Christians felt a reference to the Man-Christ-form in the fish symbol as something of great profundity. Such a significant sign, which we view as a symbol of an epoch of cosmic evolution, is far removed from the external explanations that are often given. The true symbols refer to higher spiritual realities. They did not merely "mean" something to the early Christians. Such a symbol is a picture of this or that which one can really see in the spiritual world, and no symbol is rightly interpreted unless one can point to what can be seen in the spiritual world in connection with it. All speculation is at most preparatory, and the expression "it means" does not touch the point; for one first really understands the symbol when one shows how a spiritual fact is portrayed in it.
- - See more at: <http://wn.rsarchive.org/Lectures/GA106/English/AP1971/19080910p01.html#sthash.d4BYwBQU.dpuf>
- Now let us proceed further with the evolution of humanity. Man took on the most diverse forms, and when he had developed upward to the hip-level he was at his ugliest in his physical form. The shape he then had is preserved in a decadent form in the snake. The time when man had reached the amphibian form, when the moon was still in the earth, is the time of shame and degeneracy in the evolution of mankind. **Had the moon not then departed from the earth, the race of men would have succumbed to a horrible fate, failing increasingly into evil forms.** Hence the feeling that the naive and unspoiled person has toward the snake, which retains the form that man had at his lowest point, is entirely justified. Precisely the unspoiled soul-attitude, which does not assert that there is nothing ugly in nature, feels a revulsion before the snake, because it is the document of human shame. This is not meant in a moral sense, but points to the lowest stage in human evolution.
- Man had now to pass beyond this low point. He could do this only by abandoning the animal form and beginning to condense his spiritual upper part. We have seen that all the nobler parts could develop only through the intervention of the Isis and Osiris forces. In order for the Osiris forces to work in him, in order for the nobler part to develop, something important was necessary. Man's upper part had to find the possibility of bringing the spine out of the horizontal into the vertical. All this occurred through the influence of Isis and Osiris. Man was led from stage to stage by sun and moon, which kept themselves in balance. When half of man had become physical, **sun and moon were in balance**; therefore the hip region is designated as the Balance. At that time the sun was in the sign of the Balance.
- - See more at: <http://wn.rsarchive.org/Lectures/GA106/English/AP1971/19080910p01.html#sthash.d4BYwBQU.dpuf>



# AN OUTLINE OF OCCULT SCIENCE

- “The transformations in the things of the earth existing outside the human being occur with a certain relationship to humanity's own evolution. After the **seventh cultural period has run its course**, the earth will be visited by a catastrophe that may be likened to what occurred between the Atlantean and post-Atlantean ages, and the transformed earth conditions after this catastrophe will again evolve in seven time periods. Human souls who will then be incarnated will experience, at a higher stage, the union with the higher world experienced by the Atlanteans at a lower stage. Only those human beings, however, in whom are incarnated human souls that have developed in a manner possible through the influences of the Graeco-Latin epoch and the subsequent fifth, sixth, and seventh cultural epochs of the post-Atlantean evolution will be able to cope with the newly formed earth conditions. The inner being of such souls will correspond to what the earth has then become. Other souls will then have to remain behind, whereas previously they would have had the choice of creating the conditions for advancement. Souls who will have created the possibility for themselves, in the transition from the fifth to the sixth post-Atlantean period, of penetrating supersensible knowledge with the forces of intellect and feeling, will have the maturity for the corresponding conditions following the next great catastrophe. The fifth and sixth periods are, so to speak, decisive. In the seventh, the souls who have reached the goal of the sixth will develop correspondingly further; the other souls, however, will, under the changed conditions of the environment, find but little opportunity of retrieving what they have neglected. Only at some future time will conditions appear again that will permit this. - Evolution thus advances from age to age.



# AN OUTLINE OF OCCULT SCIENCE

- “*Supersensible* cognition not only observes such future changes in which the earth alone takes part, but it is also aware of changes that occur in co-operation with the heavenly bodies in its environment. **A time will come when the evolution of the earth and mankind will have advanced so far that the spiritual beings and powers that had to sever themselves from the earth during the Lemurian age, in order to make possible the continued progress of the earth's beings, will be able to unite themselves again with the earth. The moon will then reunite with the earth. This will occur because at that time a sufficiently large number of human souls will possess so much inner strength that they will use these moon forces for the benefit of further evolution.** This will occur at a time when, alongside the high level of development that will have been reached by a certain number of human souls, another development will occur that has taken the direction toward evil. The laggard souls will have accumulated in their karma so much error, ugliness, and evil that they will form, for the time being, a special union of evil and aberrant human beings who violently oppose the community of good men.



# AN OUTLINE OF OCCULT SCIENCE

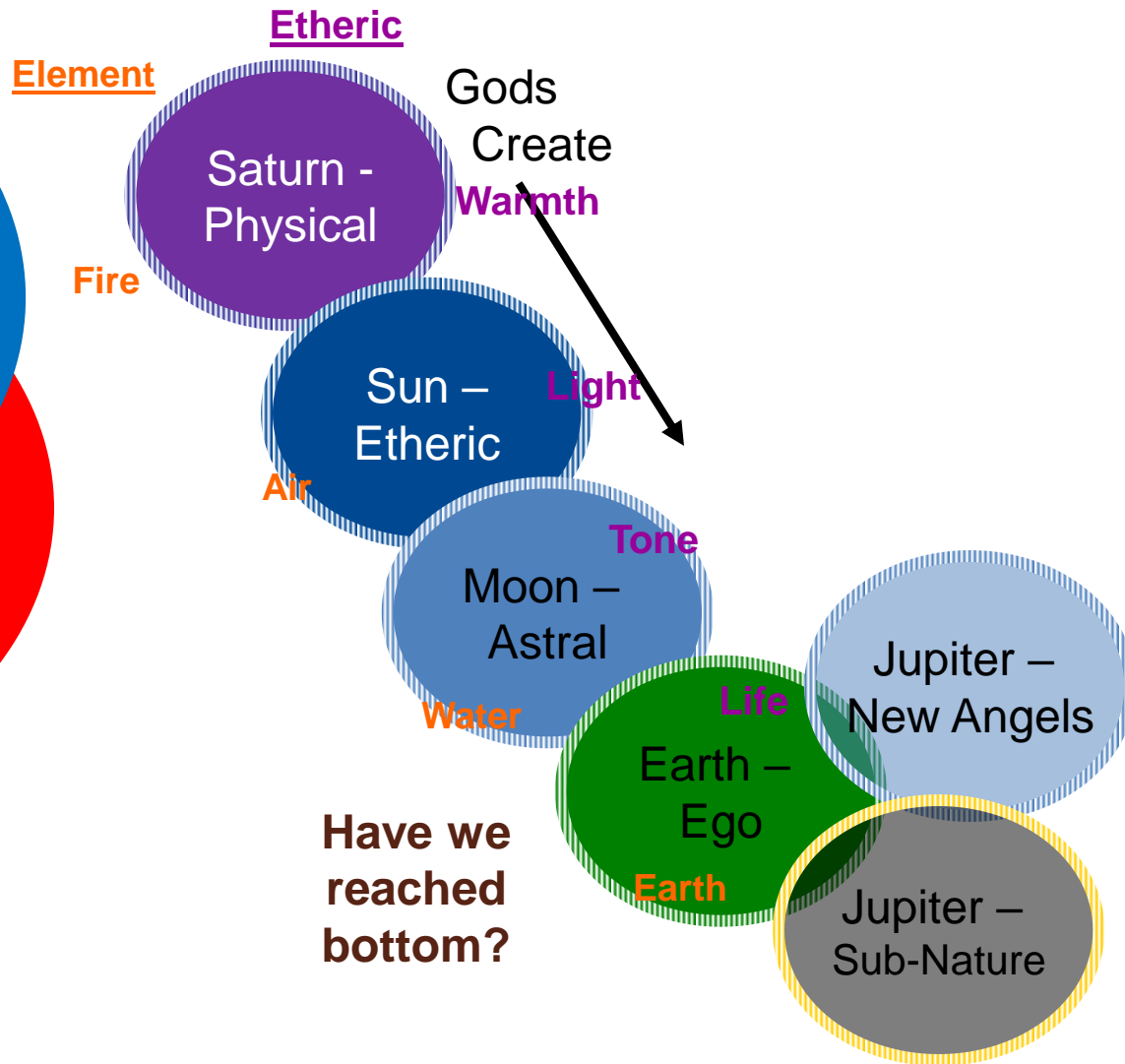
- “The good humanity will through its development acquire the **use of the moon forces and thereby so transform the evil part** also that, as a special realm of the earth, it may participate in further evolution. Through this work of the good humanity, the **earth, united with the moon**, will be able, after a certain period of evolution, **to reunite also with the sun and the other planets**. Then, after an intermediate stage, which presents itself as a sojourn in a higher world, the **Earth will transform itself into *Jupiter***. Within this state, what is now called the mineral kingdom will no longer exist; the forces of this mineral kingdom will be transformed into plant forces. The plant kingdom, which in contrast to the present plant kingdom will have an entirely new form, appears during the *Jupiter* state as the lowest kingdom. To this a higher kingdom is added, the transformed animal kingdom; above it there is a human kingdom, which proves to be the progeny of the evil community that arose on the earth; above all these are to be found the descendants of the good community of earth men, a human kingdom of a higher order. A great part of the activity of this latter human kingdom consists in the work of ennobling the fallen souls of the evil community, so that they may still be able to find their way back into the actual human kingdom.” (2, pp. 360-361)



# THE GODS AND THE HUMANS

- The vital point, the point of intersection and of change in the ascending life of mankind, lies at the time of the separation of the sexes
- There is some analogy between the relations established by the world of mankind with the divine world and by the human kingdom with the animal kingdom
  - Oxygen and carbonic acid are in-breathed and out-breathed by man
  - Plant-kingdom breathes out oxygen; man ‘breathes’ out *love* since separation of the sexes
  - The Gods are nourished by this effluence of love
- **Mankind is at the same time a fallen God and a God in the becoming**
- The kingdom of the heavens is nourished by the effluence of human love
  - Ancient Greek mythology expresses this reality when it speaks of nectar and ambrosia
- Through human love, the life of the Gods is sustained
- When Lucifer, in the form of serpent, induces man to seek for knowledge, Jehovah is wrath
  - Lucifer is here understood as fallen God who instills into man ***the desire*** for personal knowledge
  - This sets mankind in opposition to the Divine Will which has created him in its image
- Rosicrucian science explains the role of Lucifer in the world: “Know, O man, that through thy being flows a current which ascends and a current which descends”
- - Source: <http://wn.rsarchive.org/Lectures/GA094/English/SGP1978/19060527p01.html>

# PREPARING FOR THE NEXT COSMIC STAGE OF THE HUMAN CONDITION



Up to super-nature  
balanced by  
down into sub-nature.  
Mineral kingdom  
dissolves away.



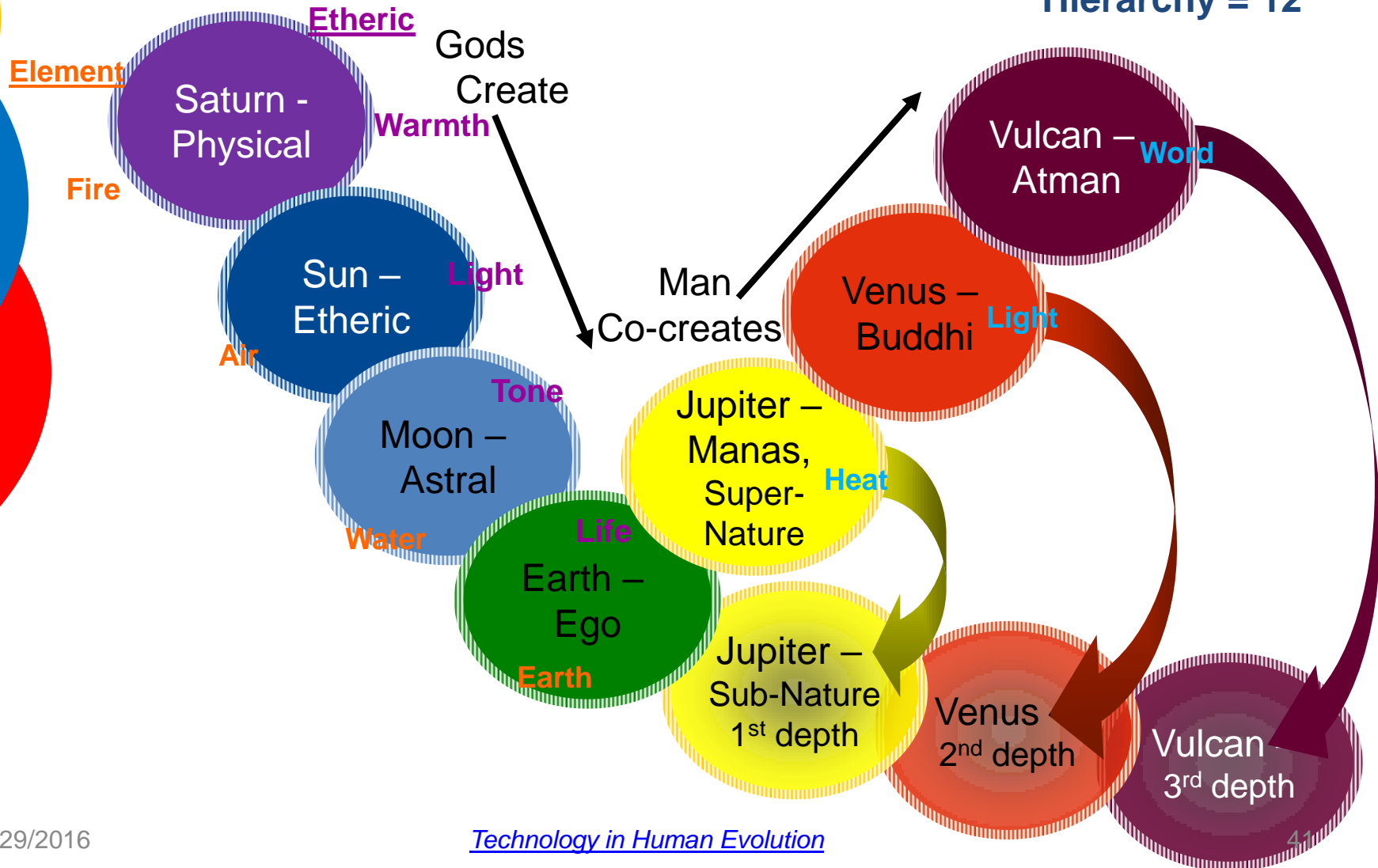
# OUR DEBTS AND OUR DEBTORS

- During the second half of the prior planetary condition called Old Moon, when the angels were at the human stage, we entered their field of activity and became quite a nuisance to them. Some of them did not complete their goal - were we in part to blame? Is this what is meant by "forgive us our debt"? And now, in the second half of Earth evolution, those who will be human on Jupiter are being pushed up from below, through Ahriman's realm - so they come with an Ahrimanic "flavor", and they are becoming a nuisance for us? "As we forgive our debtors" is now understood. As those angels love us, so shall we love those who will be human next.



# 7 STAGES OF HUMAN CONDITION

Hierarchy = 12





# DISCUSSION QUESTIONS

- What must we wrest from Ahriman?
  - As the East had to deal with Lucifer, so must the West deal with Ahriman
- What role do the Great Teachers of Humanity, as Moon beings, play in the drama with Ahriman?
  - How do they help to prepare us?
  - Do they work with Lucifer to ‘warm’ technology?
  - Are they at work when we ‘love’ our devices?
- What will our connection to the physical Earth be in a few millennium?
  - Will it be through avatars?
  - Will virtual reality be at a level ‘below’ the physical?
  - Without physical bodies, will all humans be here simultaneously?



# STRETCH AND BIO BREAK



# QUESTIONS TO PONDER DURING BREAK

- What is a law of physics? Can these laws change?
  - [Fine-tuned Universe](#)
  - [Anthropic principle](#): universe accommodates conscious life
- 6 Elohim go with the sun, 1 (Jehovah) remains with moon
  - Sacrifice of Jehovah
  - Sun god, Ahura Mazdao (and other names) expected by ancient mysteries to come to earth
- What will it mean for Sun God to become a human?
- What will it mean for the sun and earth to reunite?
- What will it take within humanity for such a reunion?
- What will humanity gain from a reunification w/moon?



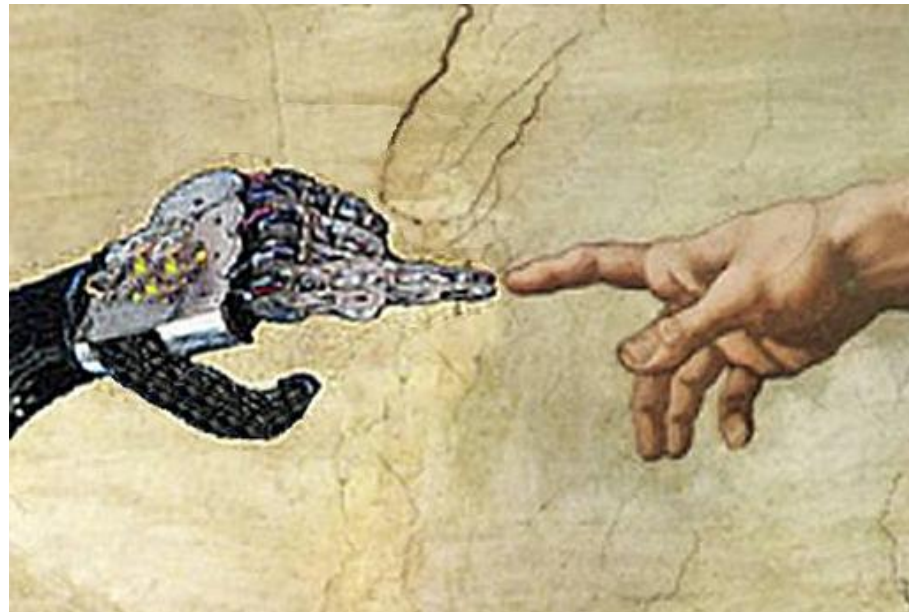
# STRETCH AND BIO BREAK

5 Minutes!



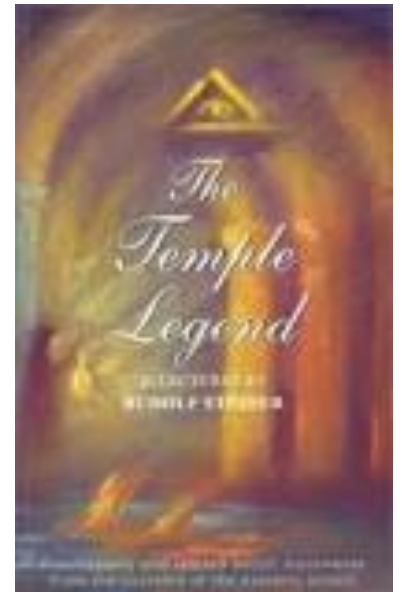
# HUMAN SEXUALITY

And its relationship to the moon



# WHY MYTHOLOGY?

- Myths: an expression of profound esoteric truths
- Not everyone could be initiated
  - It was known that such stories would, **when the individual reincarnated**, have **prepared** them
    - What is such a preparation?
    - Where does it become incorporated?
    - Are our children “prepared”?
    - Are we “those who were so prepared”?
  - “It was not faith, but knowledge, that inspired these myths.”
    - R. Steiner, *The Temple Legend*,



# STORY OF ADAM AND EVE

- As taught by Christian Rosenkreutz
- Seven Elohim (Exusiai):
  - “Let us create Man *in our likeness*”
  - Six will leave with the sun
- Unnamed Elohim creates **asexual** Eve
  - That Elohim *unites* himself with his own creation resulting in Cain
  - Spiritual concept as fertilizing agent
- Seventh Elohim, Yahveh (Jehovah), creates Adam
  - This asexual Adam is known as Adam Cadmon in esoteric lore
  - Adam *unites* himself with Eve; from this union comes Abel
  - Yahveh sacrifices to remain with earth-moon, later only moon







# ROLE OF THE ELOHIM (אלהים)

Following Old Moon, there were two kinds of Elohim:

1. **Remained** with the union of wisdom and **fire** state
  - Remembrance of fire-breathing dragons
  - Impulse towards freedom
2. **Went beyond** - during the creation of man *they were no longer filled with desires*
  - So they were able to endow their creation with calm and clear wisdom
  - That is the essential Yahveh — or Jehovah
  - Wisdom without *personal* desire

# LUCIFER AND JEHOVAH

- When Lucifer got the woman to eat from the Tree of Knowledge, she:
  - Laid the basis for becoming independent in respect to wisdom
  - Ceased to remain a mere **tool** of Jehovah (as he had planned)
  - Lost Jehovah's power to fertilize herself through wisdom
- By giving the apple to man, she wiped out Jehovah's power
  - Thus woman became dependent on man for procreation
  - But “I will put **enmity** between thee and the woman, and **between thy seed and her seed**” — *Genesis 3:15*



# LUCIFER'S INDEPENDENCE

- Lucifer led mankind along this path to independence
- Jehovah was against this – forbade them to eat from the Tree of Knowledge
- New bodies had to come into existence
  - Death and reincarnation came into the world
  - Karma **as a gift** from the Divine-Spiritual
- Woman no longer fertile now through herself: “barren”
  - Fertilization now must come from outside
  - This kind of death now enters the world



# HUMAN FORM AND PROPAGATION

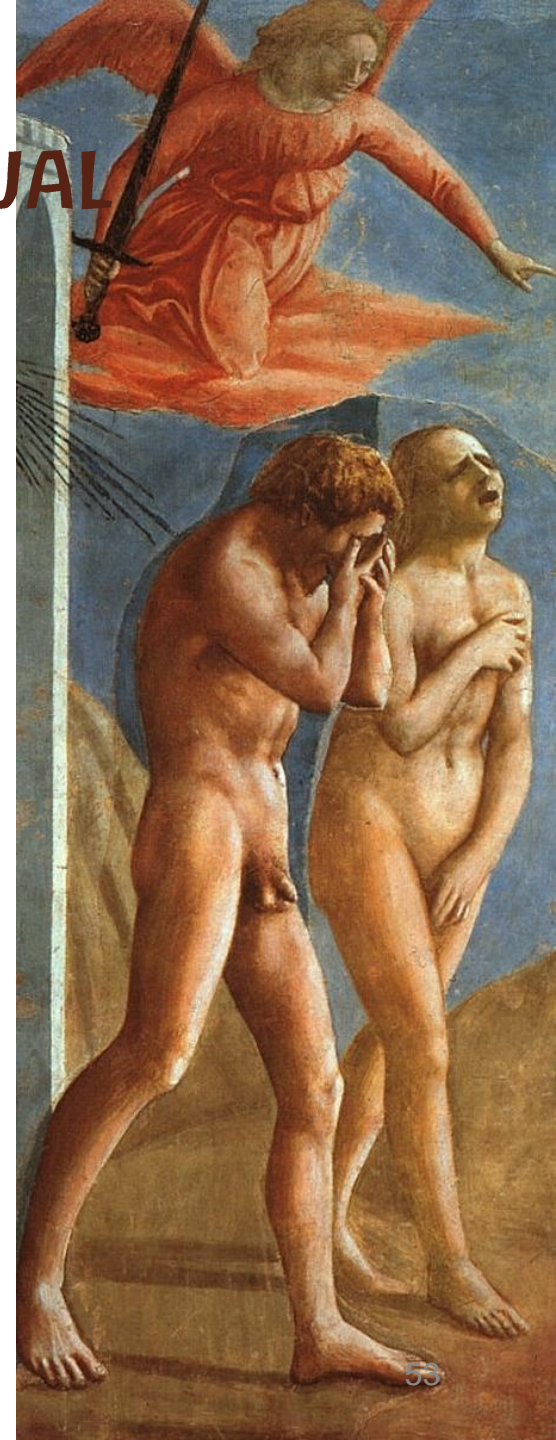
- In the beginning, all human beings are similar
  - Appearance same from creation
  - All created after the image of the Elohim
  - Propagated then by asexual means
  - All retained the same form
  - Father looked like son and grandson
- What caused mankind to change, become differentiated?
  - Through the fact that two, not one, were engaged in propagation
  - Offspring then looked like the father **and** like the mother





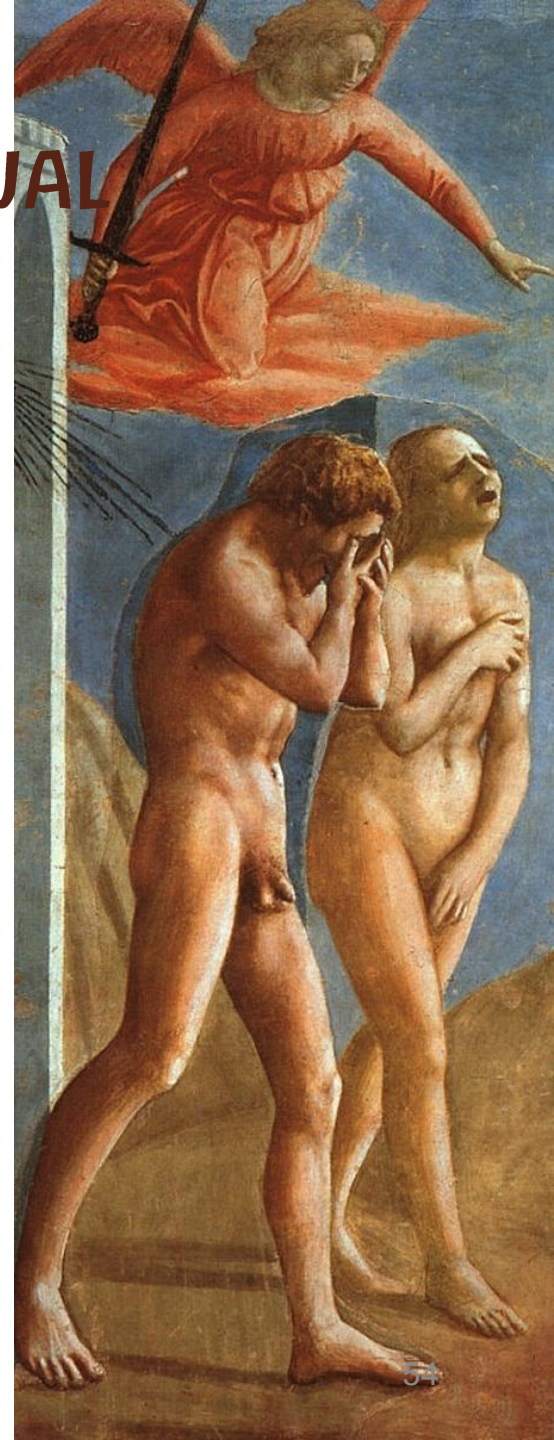
# TRANSFORM ASEXUAL TO SEXUAL

- Physically, there is first of all a woman, who is fertilized *from above*
  - It was the Divine Spirit *in woman* which was the fertilizing principle
- When the separation of the sexes happened, the differentiation started in the **transformation** of the female's spiritual organs of **fertilization** into organs of **wisdom**



# TRANSFORM ASEXUAL TO SEXUAL

- **Masculine** power that the woman had in herself turned the creative force into organs of wisdom
- The generative force stayed with woman
- The **creative physical force** stayed with man
- Result of separation: the spinal cord and the brain with the nerve branches appeared
  - Portrayed as Tree of Knowledge
  - The **organ of wisdom** is formed in the vertebrae by the spinal cord and its extension into the brain
- From then, there is a **duality** in Man



# FERTILIZATION AFTER THE FALL

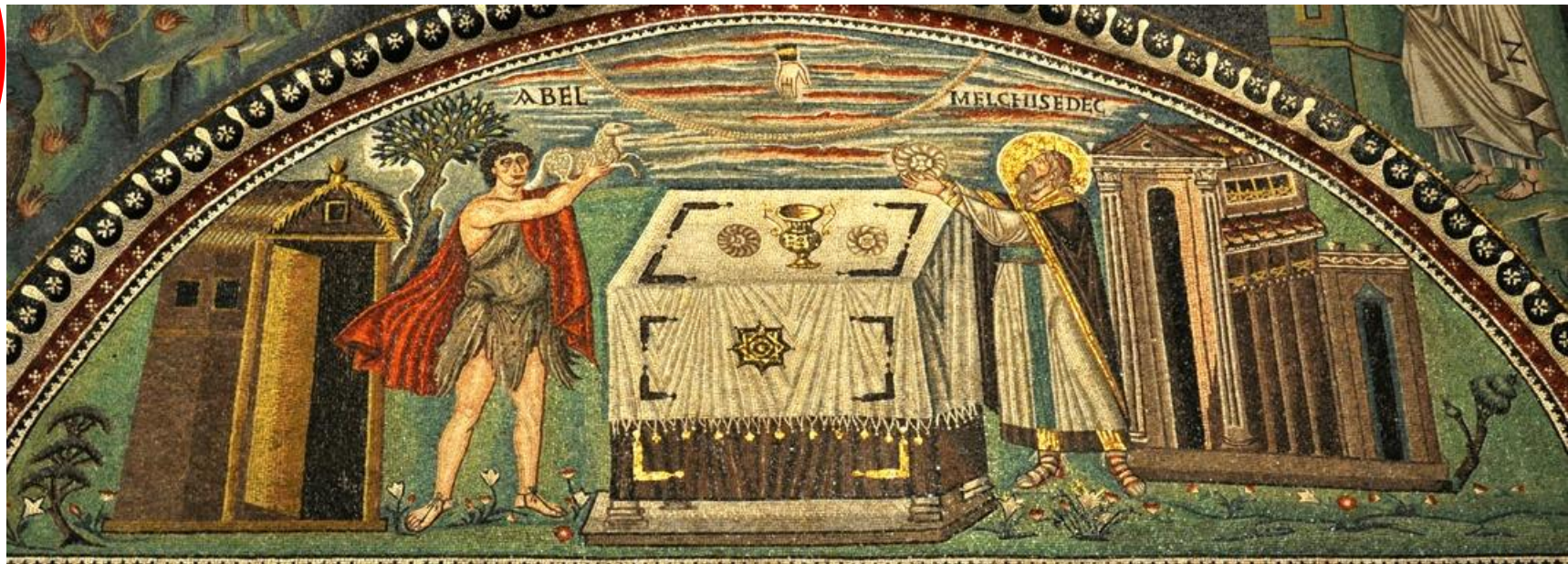
- The feminine active spirit becomes **physically** infertile
  - Can no longer produce offspring out of herself
  - Self-fertilizing spiritually but not physically
- The masculine passive spirit is spiritually infertile but can fertilize physically
  - Spiritually, he now becomes fertilized by everything in the world
  - He **becomes spiritually-capable of being fertilized**
    - Fertilized by everything external being gathered and combined
    - Male wisdom was orientated towards assembling worldly wisdom
- The etheric body becomes opposite sex to physical
  - Soul remains “a mix” of both sexes
  - Spirit does not participate in sexual separation





# CAIN & ABEL AS TAUGHT BY C. ROSENKREUTZ

- Cain is a direct descendant of a god, Abel of humans
- Cain **tills** the ground, Abel **tends** sheep
- The sacrifices which Abel made were pleasing to Yahveh
  - Its smoke rose up (was accepted)
- The sacrifices brought by Cain were not
  - Its smoke remained with the earth





# YAHVEH CAUSED STRIFE

- Between the sons of Cain and the sons of Abel
  - Between the two seeds
  - The result was that Cain committed fratricide
  - Cain was **excluded** from communion with Yahveh
  - “Am I my brother’s keeper?” **egoism begins**
  - He went away into *distant lands and founded his own race*
  - Descendants of Cain: creators of **art & science**, working of metal ores & **fire** (greek: *techni* = art)





# SEPARATION INTO SEXES

## MID-ATLANTEAN TIMES

- Now begins the process of separation into sexes
  - **Able** represents female *wisdom* typified in intuition
  - **Cain** represents male *wisdom*
  - The physical body and the etheric body develop **opposite sexes**
  - The **soul is both sexes** but as our deeper nature symbolized as the feminine
  - The **spirit is sexless** yet in its connection with the brain which became male is symbolized as masculine
- Thus we have two founding generations of mankind:
  1. The race of Cain: descended from Eve and an Elohim
  2. The race of Abel: Yahveh → Adam + Eve (asexually)
    - “He knew her” ...



# WHAT CAIN AND ABEL REPRESENT

- Cain and Abel are the *representatives* of **two kinds of thinking**
- So long as mankind was still female-male, it was impossible for Man to **separate spiritual wisdom and scientific knowledge**
- Only through a definite separation into the two sexes could mankind's brain be brought to the **pitch** where it could function
  - The **brain became male** – the deeper human nature became female
- Through this separation, propagation of the human species ceased to be *identical copies* of their parents and *became differentiated*

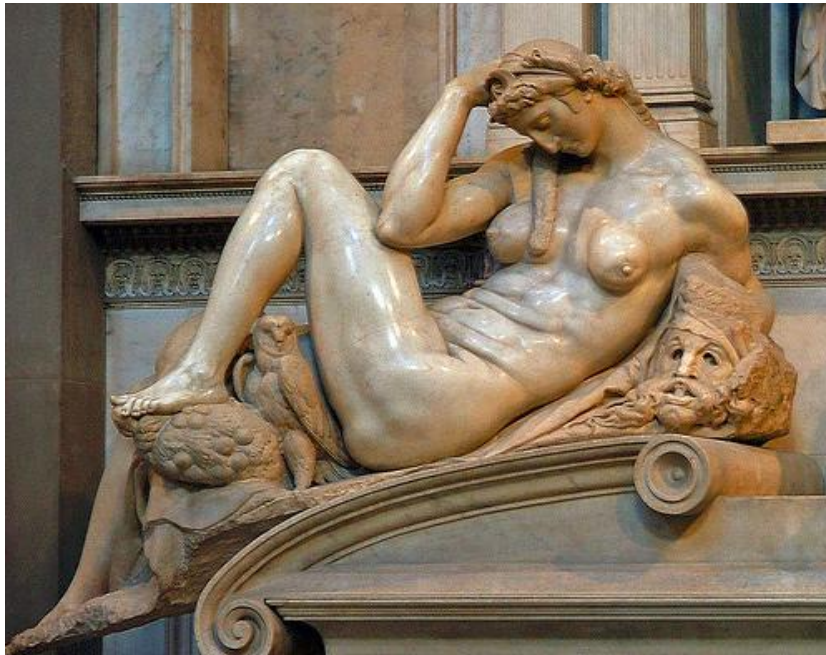


# WHAT CAIN AND ABEL REPRESENT

- Variation only comes about when a mixture occurs
- How was this mixture made possible?
  - The **masculine element committed itself to the earth**
- The physical plane and the effect it has on mankind is the mark set upon Cain
- Sons of Cain derive from those Elohim who, during Old Moon, were slightly behind in their role as Elohim
  - We are dealing with Kama, astrality, during Old Moon
  - This Kama, or **fire**, was penetrated with **wisdom** on Old Moon
- In this way, The Redemption targets the Cain stream

# ARTISTIC REPRESENTATIONS

Night – Michelangelo – Abel



Day – Michelangelo – Cain





# AFTER CAIN AND ABEL: SETH

bə-yō-wm 'ā-dām, šə-mām 'et- way-yiq-rā 'ō-tām, way-bā-rek bə-rā-'ām; ū-nə-qê-bāh zā-kār 'ō-tōw.  
 אֶתֹ: 2 זָכָר וּנְקֵבָה בָּרָאם וַיְבָרֶךְ אֹתָם וַיִּקְרָא אֶת־ שְׁמֹם אָדָם בְּיוֹם  
 in the day Man their name - and called them and blessed He created and female Male him  
 Noun Noun Noun Acc Verb Acc Verb Verb Noun Noun Acc

<http://biblehub.com/interlinear/genesis/5.htm>

1254 [e]  
 s hib-bā-rə-'ām.  
 הִבְרָאָם:  
 - when they were created  
 Verb

6754 [e] 1823 [e] 3205 [e] 8141 [e] 3967 [e] 7970 [e] 121 [e] 2421 [e]  
 kə-šal-mōw; biḡ-mū-tōw way-yō-w-leḡ šā-nāh, ū-mə-'at šə-lō-šîm 'ā-dām, way-hî  
 - כְּצַלְמוֹ בְּדְמוּתוֹ וַיּוֹלֵד שָׁנָה וּמֵאֶת שְׁלֹשִׁים אָדָם וַיֵּחִי 3  
 according to his image [a son] in his own likeness and fathered years and a hundred thirty Adam And lived  
 Noun Noun Verb Noun Noun Noun Noun Verb

8083 [e] 8352 [e] 853 [e] 3205 [e] 310 [e] 121 [e] 3117 [e] 1961 [e] 8352 [e] 8034 [e] 853 [e] 7121 [e]  
 šə-mō-neh šêṭ, 'et- hō-w-lî-ḡōw 'a-ḥā-rê 'ā-dām, yə-mê- way-yih-yū šêṭ, šə-mōw 'et- way-yiq-rā  
 שְׁמֹנֶה שֵׁט אֶת־ הוֹלִידוֹ אַחֲרַי אָדָם יְמֵי־ וַיְהִי 4 . שֵׁט: שְׁמוֹ אֶת־ וַיִּקְרָא  
 eight Seth - he had begotten after of Adam the days And were Seth his name - and he called  
 Noun Noun Acc Verb Adv Noun Noun Verb Noun Noun Acc Verb





# SETH AND LIKENESS

- Adam again united himself with Eve → new race: Seth
- In the days the Elohim created Man, in their **likeness** made he it; **female-male** created he it; and blessed it, and called its name Adam, in the day when it was created. And Adam lived an hundred and thirty years, and begat a son *in his own likeness*, after his image; and called his name Seth (Genesis 5) – R. Steiner
- With Seth the sexual separation process completes
- Seth takes over the role of Abel





# SONS OF ABEL/SETH AND SONS OF CAIN

## Abel/Seth's Character      Female

- Seth's wisdom can be expressed in words which go straight to the **human heart** and can uplift a person but is unable to produce anything tangible of a technical nature such as in art or science
  - It is a wisdom which is a directly inspired gift of God
  - They wish not to add to that wisdom but accept it as it is
  - Religious heritage (genealogy) carried by the female
  - Story of Seth planting tree from Paradise over Adam's grave

## Cain's Character      Male

- Wisdom attained from below through human passions (fire) welling up from the human will
  - They are the hardworking industrious ones who seek to accomplish everything through their own efforts
  - Offspring known as the sons of fire

120 [e]	1323 [e]	413 [e]	430 [e]	1121 [e]	935 [e]	834 [e]	3651 [e]	310 [e]	1571 [e]	1992 [e]	3117 [e]
hā-'ā-dām,	bə-nō-wī	'el-	hā-'ē-lō-hīm	bə-nē	yā-bū-'ū	'ā-šer	kēn,	'a-ḥā-rē-	wə-ḡam	hā-hēm	bay-yā-mīm
הָאָדָם	בָּנוֹת	אֶל-	הָאֱלֹהִים	בָּנָי	יָבֹאוּ	אֲשֶׁר	כֵּן	אַחֲרָיִם	וְגַם	הֵם	בַּיָּמִים
of men	the daughters	unto	of God	the sons	came in	when	that	after	and also	those	in days
Noun	Noun	Prep	Noun	Noun	Verb	Prt	Adj	Adv	Adv	Pro	Noun

8034 [e]	376 [e]	5769 [e]	834 [e]	1368 [e]	1992 [e]	3205 [e]
ṗ	haš-šēm.	'an-šē	mē-'ō-w-lām	'ā-šer	haḡ-gib-bō-rīm	hēm-māh
פ	הַשֵּׁם:	אֲנָשִׁי	מֵעוֹלָם	אֲשֶׁר	הַגִּבּוֹרִים	הֵמָּה
-	of renown	men	[were] of old	who	mighty men	the same
Noun	Noun	Noun	Prt	Adj	Pro	Prep

3820 [e]	4284 [e]	3336 [e]	3605 [e]	776 [e]	120 [e]	7451 [e]	7227 [e]	3588 [e]	3068 [e]	7200 [e]
lib-bōw,	maḥ-šə-bōt	yē-šer	wə-kāl	bā-'ā-reš;	hā-'ā-dām	rā-'at	rab-bāh	kī	Yah-weh,	way-yar
לְבוֹ	מַחְשַׁבֹּת	יִצֹר	וְכָל-	בָּאָרֶץ	הָאָדָם	רַעַת	רַבָּה	כִּי	יְהוָה	וַיַּרְא
of his heart	of the thoughts	imagination	and every	on the earth	of man	the wickedness	[was] great	that	GOD	And saw
Noun	Noun	Noun	Noun	Noun	Noun	Adj	Adj	Conj	Noun	Verb

776 [e]	120 [e]	853 [e]	6213 [e]	3588 [e]	3068 [e]	5162 [e]	3117 [e]	3605 [e]	7451 [e]	7535 [e]
bā-'ā-reš;	hā-'ā-dām	'et-	'ā-šāh	kī-	Yah-weh,	way-yin-nā-ḥem	hay-yō-wm.	kāl-	ra'	raq
בָּאָרֶץ	הָאָדָם	אֶת-	עָשָׂה	כִּי	יְהוָה	וַיִּנָּחֵם	הַיּוֹם:	כָּל-	רָע	רָק
on the earth	man	-	he had made	that	the LORD	And was sorry	the time	all	evil	[was] only
Noun	Noun	Acc	Verb	Conj	Noun	Verb	Noun	Noun	Adj	Adv

<http://biblehub.com/interlinear/genesis/6.htm>



# DAUGHTERS OF MEN DURING ATLANTIS

- Lines of Abel & Cain were kept separate; sinful to merge
  - Abel line known as Sons of God (Yahveh)
  - Cain line known as Sons and Daughters of men
- “The Sons of God saw the daughters of men that they were fair and took them wives” (from the line of Cain)
- From this union resulted a race of people known in occult language as the Rakshasas
  - Rakshasas easily seduced men of Atlantis (esp. 4<sup>th</sup> sub-race)
- This leads to such evil – key cause of the Flood
  - What will happen if Men see the Daughters of machines as fair?

# REPETITION OF RAKSHASAS?

*Tomorrow we explore robotics, artificial intelligence & soul*

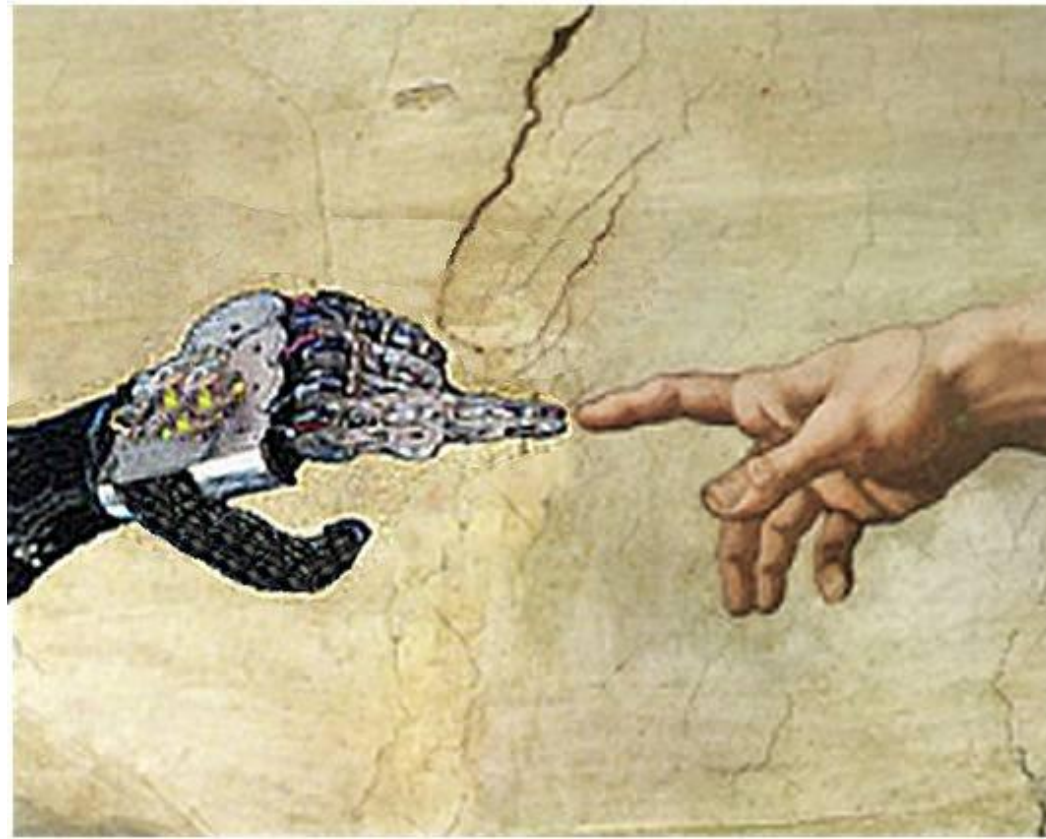
<http://www.bbncommunity.com/robots-are-being-made-to-replace-men-by-2025/>



spirit

soul

life



## END LECTURE 2

EARTH EVOLUTION – REUNIFICATION, INFERTILITY, ADAM  
AND EVE, CAIN AND ABEL, RAKSHASAS AND ROBOTS



# SCHEDULE

## April 28, 2016 Lecture 1

- 19:30 – 21:00 Merging with Machines – The Path to Jupiter?

## April 29, 2016 Lecture 2

- 19:00 – 21:00 Sexuality and Technology – Preparations for the Remaining Post-Atlantean Ages

## April 30, 2016 Workshop

- 09:30-10:00 **Registration, social time, tea/coffee**
- 10:00-11:30 Sexbots; Hephaestus; preparations for our time
- 11:30-12:30 Experiencing Rhythm Through Eurythmy: In Tune With Sound, Soul, And Creating
- 12:30-01:30 Lunch (BYO) together
- 01:30-03:00 Electricity & evil, EMR, sensitivity & safety, resonance, rhythms, robotics, and life
- 03:00-03:30 Break tea/coffee
- 03:30-04:00 Eurythmy exercises and tools for balancing technical work
- 04:00-05:00 Artificial intelligence, artificial soul; consciousness soul development, a path to “future Jupiter” and concluding remarks