



MERGING TECHNOLOGY WITH THE HUMAN BODY

Exploring The Western Path

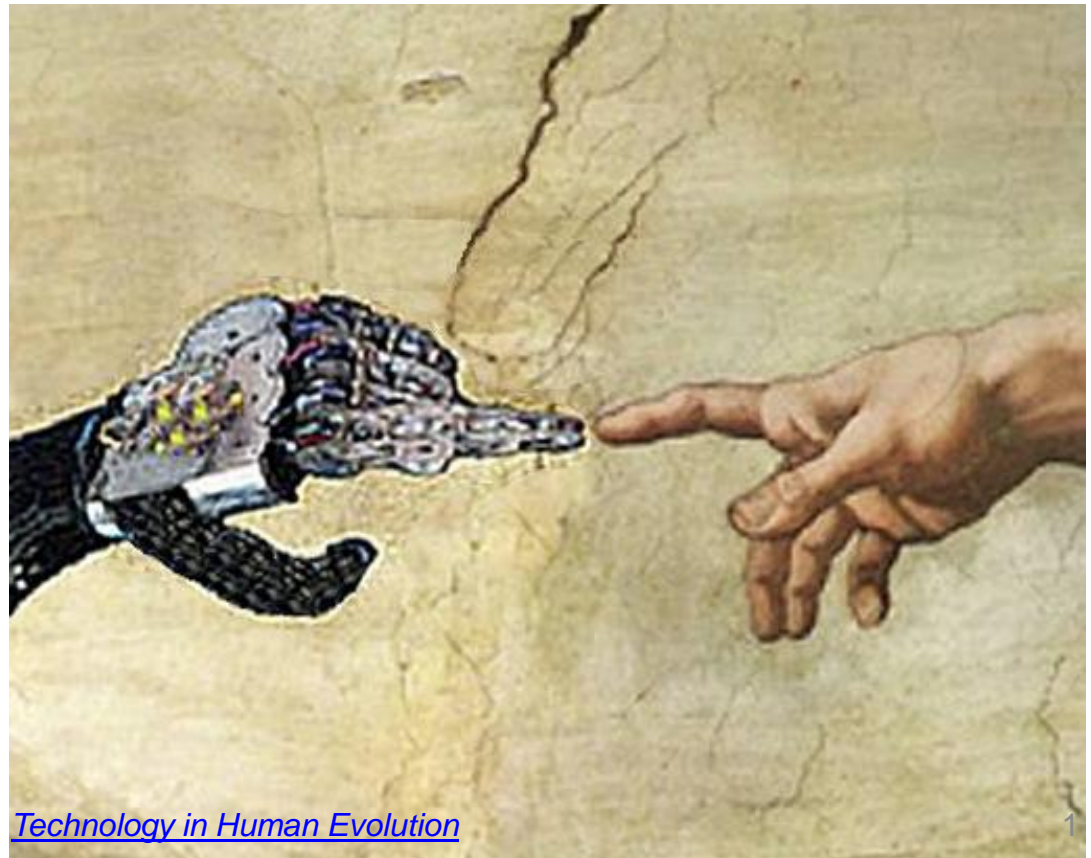
Seattle

Andrew Linnell

jandrewlinnell@yahoo.com

www.thechristianmysteries.com

12/5/2016



[Technology in Human Evolution](#)



NEWS SINCE LAST VISIT

- Evolving Science: NSS Conference, Ann Arbor, MI 12/1-4
 - The Reciprocal System of Dewey B Larson: movement
 - 2017 Conference: Interdisciplinary View of Sciences through Astronomy
- Study group via video conferencing
 - 30 minutes weekly
 - Starts early January – send email to join
- 2016 Michaelmas Conference (Dornach)
 - Science section taking up theme of Challenge of Technology



RECAP FROM LAST VISIT

- First lecture
 - Asexual to sexual, withdrawal of the moon
 - Cain and Abel, separate streams
 - Prometheus and Hephaestus
- Second lecture
 - What are machines doing to us?
 - Machines with artificial intelligence, artificial soul
 - Merging Human and Machine
- Third lecture
 - Evolution of humanity and the earth
 - Sub-nature, last Letter to Members by Steiner
 - Beginning of co-creation of Jupiter starts now
- Fourth lecture: electricity and evil



FACING THE FUTURE (WITHOUT FEAR)

- We must eradicate from the soul all fear and terror of what comes towards Mankind, out of the future. We must look forward with absolute equanimity to whatever comes, and we must think only that whatever comes is given us by a world direction full of wisdom.
- It is part of what we must learn during this age, namely to act out of pure trust in the ever present help of the spiritual world; truly nothing else will do if our courage is not to fail us.
- Therefore let us discipline our will, and let us seek the awakening from within ourselves, every morning and every evening.

— Rudolf Steiner



PICTURES OF THE FUTURE?

Fear

- Failing Morality
- Movies
- Novels
- Non-fiction: Singularity
- News (from AI etc.)

Courage

- Super Heroes (comics)
- New Capacities
- Rising Morality

EVOLUTION OF CONSCIOUS AWARENESS

Not to scale

Spiritual world full of beings

Sentient Soul 3rd M BC

Ancient Mysteries

Intellectual Soul 8th C BC



End of the "Earth" (4th C)

Materialism →

1413 5th PACA

Consciousness Soul
Culmination

Who needs
religion?

7893 End of 7th PACA

8th M Moon returns

War All v All

American Cultural Age

7th M Women infertile

5733 End of 6th PACA

Russian Cultural Age

3573 End of 5th PACA

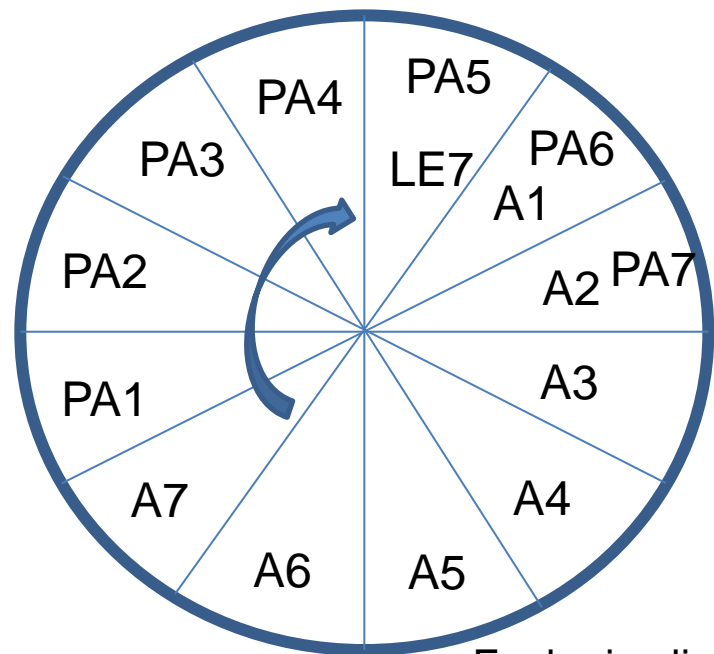
End of 20th C Meeting with
Sp. Beings

BODY AIDS SOUL DEVELOPMENT BY AGE

- Lemuria (moon separated)
- Atlantis (phys incarnation)

Post-Atlantean

- I. 56 49 earth
- II. 49 42 speech
- III. 42 35 stars
- IV. 35 28 33 – Christ
- 1879 V. 28 21 Today 27
- VI. 21 14 Year 4,000
- VII. 14 7 Year 6,200 – women are infertile
Year 8,300 – moon returns



Each pie slice
represents
~2160 years



WILL WE LIVE THRU AVATARS?

- “In the *present* evolutionary state the human being is organized in such a way that the ego and astral bodies **must** make use of the physical sense organs in order to become aware of the physical world.”
 - What about the next evolutionary state?
- “The human being has sense organs in the astral body which enable perception in the astral world, but these have normally not been developed” – R. Steiner, *Man & Woman in Light of Spiritual Science*, 18Mar08



WHAT SPIRITUAL BEINGS ENTER?

- Moon: The Great Teachers of Mankind
- Vulcan: The Super Heroes
- Future Jupiter Human Beings
- Spirits of Birth and Death
- Others



TONIGHT

- Research, not a “final product”
- Interface between human and machine
- Electricity as an ether, albeit “fallen”



THE POWER OF THE HUMAN SOUL (*BACK IN OUR TIMES*)

- Can a machine think?
 - Can a machine influence thought?
- The telephone and the extension of the soul over space
- The automobile and extension of touch sensation
 - This experience will vanish soon – self driving cars
 - What does it mean when one gets a “feel” for their car?
- Can our soul operate ‘within’ a robot? Avatar?
- What role does our soul have? Emanations?
 - [AI detecting your emotions](#) with wireless signals
 - [AI detecting whether or not you are a criminal](#)

WHERE DO WE FIND ROBOTICS

- Everywhere!
- Wearable
- Prosthetic
- Farming and gardening
- Transportation
- Medical
- Lobbies
- Rescue
- Security/Military



AUTOMATED AGRICULTURE





FROM THE AG COURSE, LECTURE 4

- “I do not mean that you should water them with it in a crude way; you spray the plants with it, and you will presently see how well this supplements the influence which is coming from the other side, out of the earth itself, by virtue of the cow-horn manure. And now, suppose you extend this treatment to the fields on a large scale. After all, there is no great difficulty in doing so. Why should it not be possible to **make machines, able to extend over whole fields** the slight sprinkling that is required? If you do this, you will soon see how the dung from the cow-horn drives from below upward, while the other draws from above — neither too feebly, nor too intensely.” -- 12Jun1924, Koberwitz, GA 327



IMPACT OF ROBOTICS

Gain

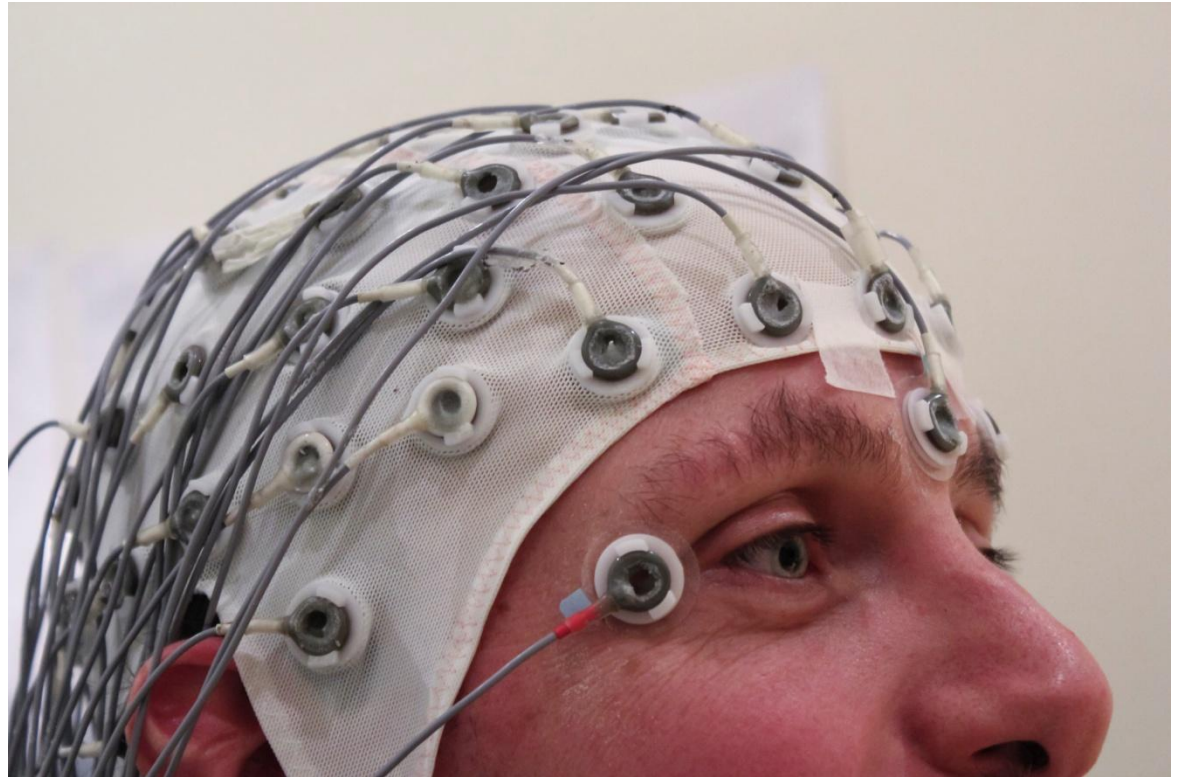
- Relief from tedious
- ...
- Emancipation
- Know what they are not
- Inner Divinity

Lose

- Jobs
- ...
- Connection to Divinity
- Believe that they are
- Inner Divinity

HOW IT BEGINS: GIVING PARAPLEGICS A NORMAL LIFE

- EEG skull cap
- Monitors activity
- Signatures = action
- Slippery slope



Source: <https://futurism.com/experimental-brain-implant-lets-a-paralyzed-woman-communicate/>

THE DESIRE TO BE SUPER-HUMAN

Bionic Boot

Posted by Futurism

12,068,613 Views

A person is seen from behind, running on a dirt path. They are wearing a black sleeveless shirt, black pants, and black gloves. Their legs are equipped with large, mechanical, bionic boots that extend from the knees down to the feet. The background shows a clear blue sky and a distant landscape with hills and a body of water. The text "They work on nearly any kind of terrain, from concrete and asphalt to dirt and sand" is overlaid on the image in white and yellow font.

They work on nearly
any kind of terrain,
from concrete and asphalt
to dirt and sand

WEARABLE ROBOTICS

- “I'm getting quite a few questions lately regarding one of my favorite companies, **Ekso Bionics Holdings Inc.**(OTC:EKSO).
- “As you know, the company is tied into one of the most dynamic Total Wealth Trends of all - and potentially the most profitable, too - **Human Augmentation**. So I thought we'd revisit EKSO and, in the process, update some of the interesting stuff that's going on.”
- www.totalwealthresearch.com
- <http://futurism.com/paralyzed-monkeys-able-to-walk-again-with-brain-implant-human-trials-are-next/>



<http://eksobionics.com/ekso>
<https://www.newscientist.com/article/2112562-first-home-brain-implant-lets-locked-in-woman-communicate/>




CHANGING THE PHYSICAL BODY

- “Man will bring about the future form of his body
- Inasmuch as the human being becomes softer and softer, inasmuch as he separates himself from the hard parts, he is approaching his future
- An age comes when man will live above his earthly portion as it were, as in time gone by
- This condition, which is comparable to your present sleep-condition, will then be replaced by another when the human being will be able to draw his etheric body out of his physical body at will
- Rudolf Steiner, *Theosophy of the Rosicrucian*, Lecture 13, *The Future of Man*, 5Jun1907, Berlin, GA 99



CHANGING THE PHYSICAL BODY

- “It will be as if the denser part of man were here below on earth and the human being will make use of it from outside like an instrument
- Man will no longer bear his body about and live within it, but will float above it, the body will itself have become rarefied and finer”
- Rudolf Steiner, *Theosophy of the Rosicrucian*, Lecture 13, *The Future of Man*, 5Jun1907, Berlin, GA 99
- Avatar time?



“Out of desperate circumstances, the new Christ experience will evolve.

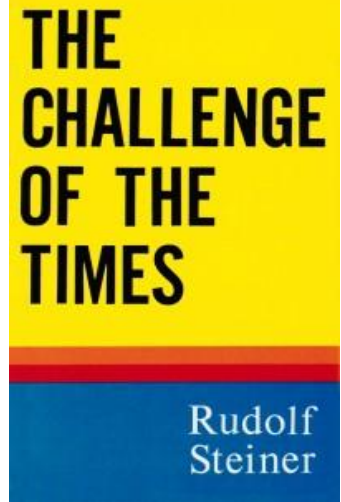
Trying outer circumstances will become inner soul trials.
Out of these soul trials, vision will be born.”

-- R. Steiner, *For the Michael Age*



BACKGROUND

- Rudolf Steiner indicated that three occultisms would be developed:
 1. East: Mysteries of Birth; **Eugenic**
 2. Central: Mysteries of Health and Healing; **Hygienic**
 3. West: Mysteries of the Human-Machine: **Mechanical**
- Mechanical Occultism
 - Related to resonances, frequencies between Human & Machine
 - Moral vibrations could be used to start & operate a machine





ISAAC NEWTON

- “Is not Animal Motion perform’d by the Vibrations of this Medium [etheric body], excited in the Brain by the power of the Will...?”



RUDOLF STEINER

- “The spiritual-etheric shall be placed in the service of outer practical life. The emotion in a human mood **will be transmitted in wave movements to machines, between the dying forces of the nervous system** and the **external power** of the machine.” – 13Mar1917, from the *Schiller File* (note: I could not find the lecture for this quote in rsarchive.org)
- “What is expressed by the Tau is a driving force which can only be set in motion by the power of selfless love. It will be possible to use this power to drive machines, which will, however, cease to function if egoistical people make use of them.” [refers to *Hiram Abiff, Cain*]
– The Temple Legend, lecture 20, 2Jan1906, Berlin, GA 93



THE MECHANICAL AND THE MORAL

- “It is perhaps known to you that Keely invented a motor which would only go if he himself were present. He was not deceiving people about this; for **he had in him that driving force originating in the soul, which can set machines in motion.** A driving force which can **only be moral**, that is the **idea of the future**; a most important force, **with which culture must be inoculated**, if it is not to fall back on itself.
- The **mechanical and the moral must interpenetrate** each other, because **the mechanical is nothing without the moral.** Today we stand hard on this frontier. In the future machines will be driven not only by water and steam, but **by spiritual force, by spiritual morality.**
- This power is symbolized by the Tau sign and was indeed poetically symbolized by the image of the Holy Grail. **Man is no longer merely dependent on what Nature will freely give him to use**; he can shape and transform Nature, he **has become the master craftsman of the inanimate.** In the same way he **will become the master craftsman of what is living.**” – The Temple Legend, lecture 20, 2Jan1906, Berlin, GA 93



MERGING MAN AND MACHINE

- “Now I will turn again to the fact that in this 5th PACA humanity will have to find ways of **dealing with great life-problems** which in a certain sense were veiled by the wisdom of the past.
- One of these great problems will be concerned with finding out how to **place the spiritual etheric forces at the service of practical life.**
- I have told you that in this epoch we have to solve the problem of how the **radiations from human states of mind are carried over into machines**; of how human beings are to be brought into relation with an **environment which *must become increasingly mechanized.***” – *The Wrong and Right Use of Esoteric Knowledge*, lecture 3, 25Nov1917, Dornach, GA 178



IMPORTANCE OF WHO BRINGS THIS

- “Where this kind of thing goes on, the wish to yoke up human strength with the strength of machines is always involved. **It would be quite mistaken merely to oppose these things.** They are not going to fade away; they are on the march.
- The **only question** is whether in the course of world-history they are going to be **brought on to the scene** by men who are **unselfishly aware** of the great aims of earth-evolution and wish to shape these developments for the healing of mankind, **or by** groups of men who want to use them for their own or the **group's selfish ends. *That is the issue.***” -- *The Wrong and Right Use of Esoteric Knowledge*, lecture 3, 25Nov1917, Dornach, GA 178



MERGING MAN AND MACHINE

- “The point is **not what** is going to happen, for it certainly will happen, but **how** it happens — how these things are handled.
- **The welding together of human beings with machines will be a great and important problem for the rest of the earth-evolution.**
- I have often pointed out, even in public lectures, that human **consciousness depends on destructive forces**. During public lectures in Basle I twice said that in our **nerve-system we are always in process of dying**. These *forces of death* will become stronger and stronger, and we shall find that they are *related to the forces of electricity* and magnetism, and to those at work in machines.
- **A man will be able in a certain sense to *guide his intentions and his thoughts* into the forces of the machines. Forces in human nature that are still unknown will be discovered — *forces which will act upon external electricity and magnetism*.**
- That is one problem: the bringing together of human beings with machines, and this is something which will exert ever-increasing influence on the future.” -- *The Wrong and Right Use of Esoteric Knowledge*, lecture 3, 25Nov1917, Dornach, GA 178



WRONG AND RIGHT WAYS

- “The **wise beings of the cosmos** will enter into the struggle
- One side will use the **morning and evening** processes in the way I have indicated; the **West** will prefer the **midday** processes, shutting out the morning and evening ones; and the **East** will prefer the **midnight** ones.
- Men will no longer manufacture substances on the basis merely of chemical attraction and repulsion; they will know that different substances arise according to whether they are made with morning and evening processes, or with midday and midnight ones. It will be known that such substances act in a quite different way on the triad: God, virtue, and immortality — gold, health, and prolongation of life.
- When the forces of **Pisces and Virgo** act in co-operation, **nothing wrongful** can be brought into being.” — *The Wrong and Right Use of Esoteric Knowledge*, lecture 3, 25Nov1917, Dornach, GA 178



WRONG AND RIGHT WAYS

- “Men will achieve something through which the mechanism of life will be detached, in a certain sense, from man himself, but will not give any one group power and rulership over another.
- The cosmic forces drawn from this direction will create remarkable machines, but only those that will **relieve man of work**, because they will carry a certain **power of intelligence** within themselves.
- And a **Spiritual Science** which itself reaches out towards the cosmic will have to see to it that all the **great temptations** which come from these machine-animals, created by man himself, are **not allowed to exercise any harmful influence** upon him.” – *The Wrong and Right Use of Esoteric Knowledge*, lecture 3, 25Nov1917, Dornach, GA 178



WRONG AND RIGHT WAYS

- “With regard to all this, the essential thing is that people should **prepare** themselves for it **by not treating realities as illusions** and by coming to a **genuine spiritual conception** and understanding of the world. To see things as they are — very much depends on that! But we can see them as they are **only if** we are in a position to bring the **ideas of Spiritual Science to bear on reality**.
- For the rest of the earth's existence the dead will be **co-operating actively in the highest degree**, and it is *how* they co-operate that will matter. Here, above all, a great distinction will arise. On one side the attitude of men on earth can **rightly lead the co-operation** of the dead in such a direction that the dead will be active out of their own impulse, an **impulse coming from the spiritual world** which the dead are themselves experiencing.” – *The Wrong and Right Use of Esoteric Knowledge*, lecture 3, 25Nov1917, Dornach, GA 178



WRONG AND RIGHT WAYS

- “But from the other side many endeavors will be made to **introduce the dead** into human existence by **artificial means**. Along the *indirect path through Gemini* the dead will be led into human life, with the result that **human vibrations will pass over into the mechanism of machines and will continue to vibrate there** in a quite definite way. The **cosmos will impart motion to the machines** by *the indirect path* I have indicated.” – *The Wrong and Right Use of Esoteric Knowledge*, lecture 3, 25Nov1917, Dornach, GA 178



WRONG AND RIGHT WAYS

- “It will thus be essential, when these problems emerge, that no improper methods should be applied to them, but **only those elemental forces which belong to nature on their own account**, and great care will have to be taken **not to introduce improper forces** into the realm of machines.” -- *The Wrong and Right Use of Esoteric Knowledge*, lecture 3, 25Nov1917, Dornach, GA 178



MATERIAL OCCULTISM

- “First, there are the capacities having to do with so-called **material occultism**. By means of this capacity — and this is precisely the ideal of British secret societies — certain social forms at present basic within the industrial system shall be set up on an entirely different foundation. Every knowing member of these secret circles is aware that, solely by means of certain capacities that are still latent but evolving in man, and with the help of the law of harmonious oscillations, machines and mechanical constructions and other things can be set in motion. A small indication is to be found in what I connected with the person of Strader in my Mystery Dramas.
- These things are at present in process of development. They are guarded as secrets within those secret circles in the field of material occultism.
- **Motors can be set in motion, into activity, by an insignificant human influence through a knowledge of the corresponding curve of oscillation.** By means of this principle it will be possible to substitute merely mechanical forces for human forces **in many things.**”



MECHANICAL OCCULTISM

- “The possibility will thus come about of rendering unnecessary nine-tenths of the work of individuals within the regions of the English-speaking peoples. **Mechanistic occultism will not only render it possible to do without nine-tenths of the labor still performed at present by human hands**, but will give the possibility also of paralyzing every uprising attempted by the then dissatisfied masses of humanity.
- **The capacity to set motors in motion according to the laws of reciprocal oscillations will develop on a great scale among the English-speaking peoples.** This is known in their secret circles, and is counted upon as the means whereby the **mastery over the rest of the population of the earth shall be achieved even in the course of the fifth post-Atlantean epoch.**”



DANGER OF VIBRATORY PHYSICS

- “Well, the whole way in which people construct machines varies greatly according to the nature of the machine in question; but everything tends towards the **gradual development** of these still imperfect, primitive machines into a kind of **machine which depends upon vibrations**, and where the aim is to make the machines **effective by means of vibrations or oscillations**, by means of movements which run a periodic course. **Everything is hastening towards such machines.**
- But if once these machines in their coordinated activity could be constructed in such a way *as can be learned from the distribution of foodstuffs in the organization of the **cow***, then the vibrations which would be conjured up on the earth-globe through the machines, these small earth-vibrations, would so run their course that what is **above the earth** would sound together with, vibrate together with what is happening **on the earth**; so that our **planetary system** in its movements would be **compelled to vibrate** with our earth-system, just as a string tuned to a certain pitch vibrates in sympathy when another one is struck in the same room.”

– *Man as Symphony of the Creative Word*, lecture 2, 20Oct1923, Dornach, GA 23



WAVES AND VIBRATIONS: MOTION

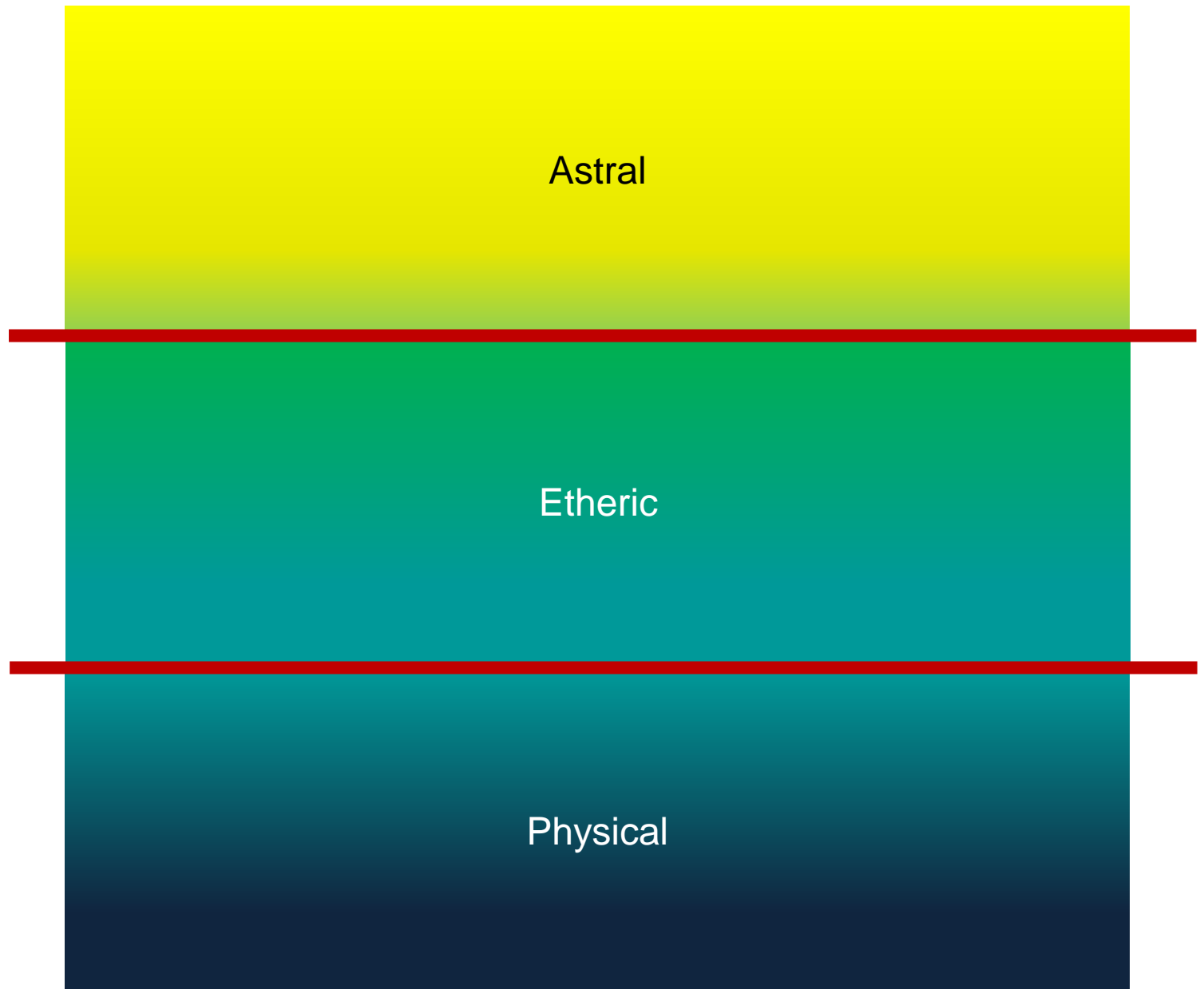
WARNING: Entering Research Area



MOVEMENT

- Fundamental in Steiner's First Science lecture cycles
- Dewey Larson's Reciprocity System Theory
 - Reality (sub-atomic) is movement, not things
 - Cosmic and Physical (Earthly) movements
- 3 'dimensions' of movement, with combinations
 1. Straight line
 2. Circular
 3. Vibratory
- Light? (an ether)
- Electricity? (also an ether)
- Mechanics: Forces in space and time ignores peripheral







BOUNDARIES

- "Let us look at the **boundary between physical and etheric** substance.
- What lies between physical and etheric substance is like nothing else in the world. It is neither gold nor silver, lead nor copper. It is something that cannot be compared with any other physical substance, yet it is the essence of all of them.
- It is a substance that is contained in every other physical substance, so that the other physical substances can be considered to be modifications of this one substance.
- To see this substance clairvoyantly was the endeavor of the Rosicrucians
- The preparation, the development of such vision they saw to require a heightened activity of the soul's moral forces, which would then enable them to see this substance. **They realized that the power for this vision lay in the moral power of the soul.**
- This **substance was really seen and discovered by the Rosicrucians.**
- They found that this substance lived in the world in a certain form **both in the macrocosm and in man.**"
- Rudolf Steiner, *Esoteric Christianity and the Mission of Christian Rosenkreutz*, lecture 1, 27Sep1911, Neuchatel, GA 130



BOUNDARIES

- “In the world outside man they revered it as the mighty **garment of the macrocosm**.
- They saw it arising in man when there is a **harmonious interplay between thinking and willing**. They saw the will forces as being not only in man but in the macrocosm also, for instance in thunder and lightning. And they saw the forces of thought on the one hand in man and also outside in the world in the rainbow and the rosy light of dawn.
- The Rosicrucians sought the **strength** to achieve such harmony of willing and thinking in their own soul in the force radiating from this etheric body of the thirteenth, Christian Rosenkreutz."
- Rudolf Steiner, *Esoteric Christianity and the Mission of Christian Rosenkreutz*, lecture 1, 27Sep1911, Neuchatel, GA 130



MORALITY AND BREATHING

Keep in mind the steamy atmosphere of Atlantis and the fire-breathing dragons of Lemuria

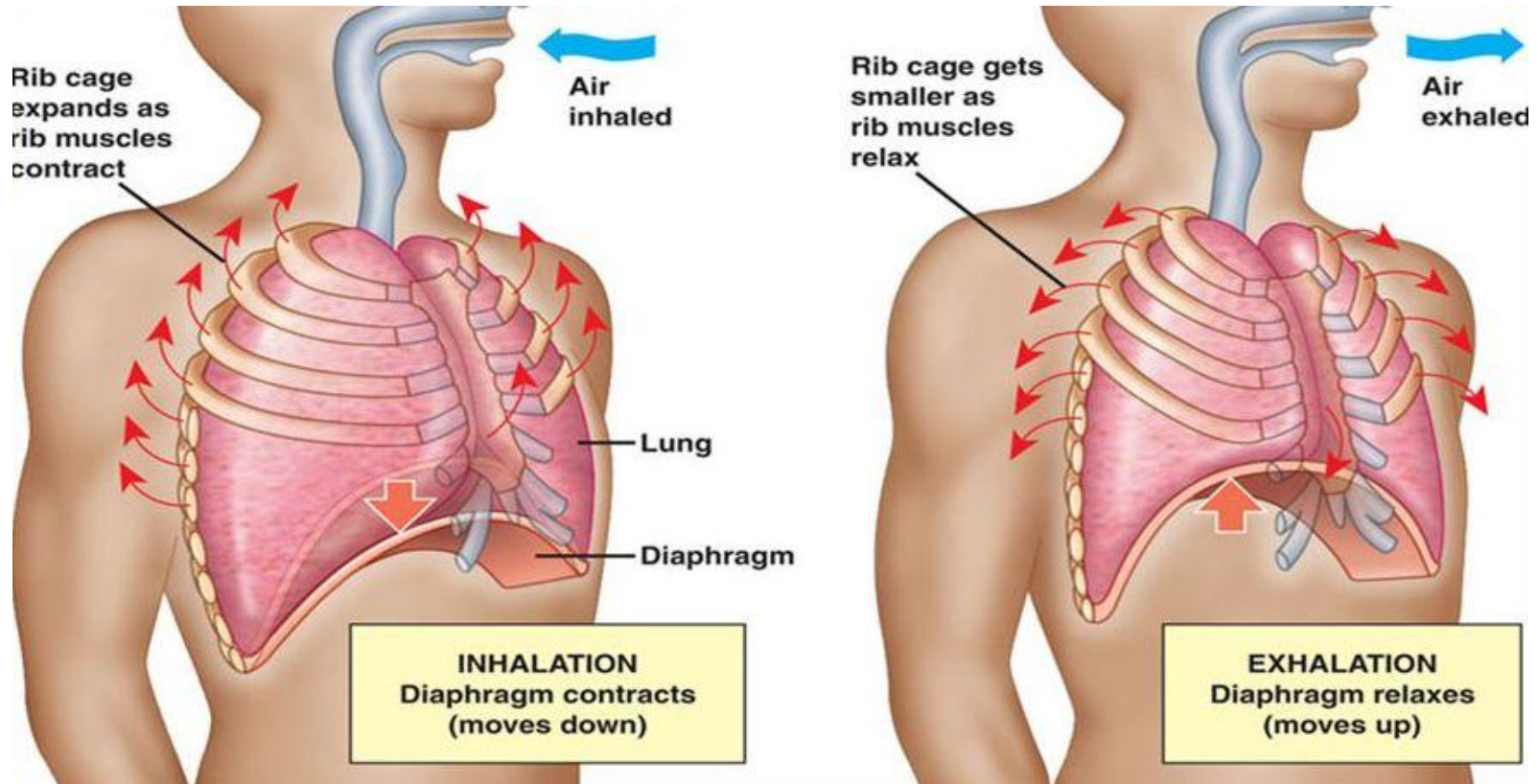
- A person's moral or immoral behavior can be seen in the steamy breath
- A man's **moral and immoral nature** in the ordinary sense of the word is **actually visible in the etheric-astral content of the steamy breath**
- Although the physical part of it dissolves, what is incorporated in it does not
- The breath contains a genie, which, in the case of steamy breath, has a physical, an etheric and an astral part, only the physical is not earthly, just watery
- The **Jupiter human beings** of the future will **evolve out of what we breathe out in present ages**

Rudolf Steiner, *Art as Seen in the Light of Mystery Wisdom*, lecture 7, 3JAN1915



REFINED BREATHING

As it Applies to Resonance Technology



Mechanical perspective



INHALATION

- Natural Science: we inhale oxygen
- Spiritual Science: we also inhale **formative forces w/*air***
 - A human being comes into being in the **element** of air
 - **An activity directed by the astral body**
- When asleep, microcosmic astral body leaves thus macrocosmic astrality is all the more active
 - Control of inhalation during sleep comes from outside
 - That is why breathing during sleep is different
 - Close to the earth, climate and other factors can make cosmic astrality abnormal



EXHALATION (NOT SAME SUBSTANCE)

- Natural Science: we exhale carbon dioxide
- Spiritual Science: not a passive process but **active**
- Process occurs in the *fluid* element through **etheric body**
 - When asleep, etheric remains with physical body; no change



FROM COARSE TO REFINED BREATHING

- **Middle breathing:** *air* (inhale to lungs) & *water* (exhale)
- **Below breathing** is more coarse
 - **Digestion:** modified exhalation
 - **Metabolism:**
 - What remains behind of inner activity from **exhalation**
 - Active in the element ***Earth***
- **Above breathing** is more refined
 - Nerve-sense process: modified inhalation
 - Active in the ethers ***Warmth & Light***



REFINED BREATHING

- **In head:** process *not in the element of air* but **warmth**
 - Macrocosm: breathing-in but **not a breathing-out of warmth**
 - What is ***exhaled* by the nerve-sense system** becomes united with what is being ***inhaled* by the lungs**
 - The **nerve-sense** system carries on **inhalation** as a taking-in **light** from outside
 - What is taken in is *not released again* to the outside
 - It is given over to the coarser breathing process of the lungs
 - To the air inhalation and thus carried farther into the organism
 - Cosmic **warmth** enters the human organism by way of breathing
 - ***Carried by the inhalation of warmth*** into the human organism:
 - Light, macrocosmic-chemism, and macrocosmic-life
 - Inhaled Vitality: **Light ether, chemical ether, and life ether**



BREATHING RECAP

- Outer Inhalation
 - Union of what is inhaled with what comes down from above
 - Sense-perception is only a breathing through the sense-organs
- Outer Exhalation
 - Leaves forces behind for metabolism; something not taken up
 - It gives something away



INNER INHALATION

- Light unites with breathed-in air when it penetrates the eye
 - Warmth is between them
 - Light coming in by way of the warmth ether, then coming to a stop
 - Thoughts can only live in us if they are illumined by the light, if breathing is illumined by the light
- Where the breathing enters, it comes to a “stop” for the light
- The light spreads itself out. It is not carried farther by the human organism; it can spread out as light
- We carry within us a pure light organism, a light organism that **thinks**
 - Thought, ideation is upheld by the Thinking system of man
- Actual metabolic digestive process is the union of inner inhalation with what the physical body does



WHERE INHALATION BORDERS ON EXHALATION

- We find the chemism is carried in to that point through the nerve-sense process
- Now the chemism comes to a stop
- It is an inner chemism, a chemical organism in us that **feels**
- Fancy is already very close to the rhythm of blood-circulation' a very inward breathing that comes into connection with the system of metabolism and the limbs, reaching into the Will

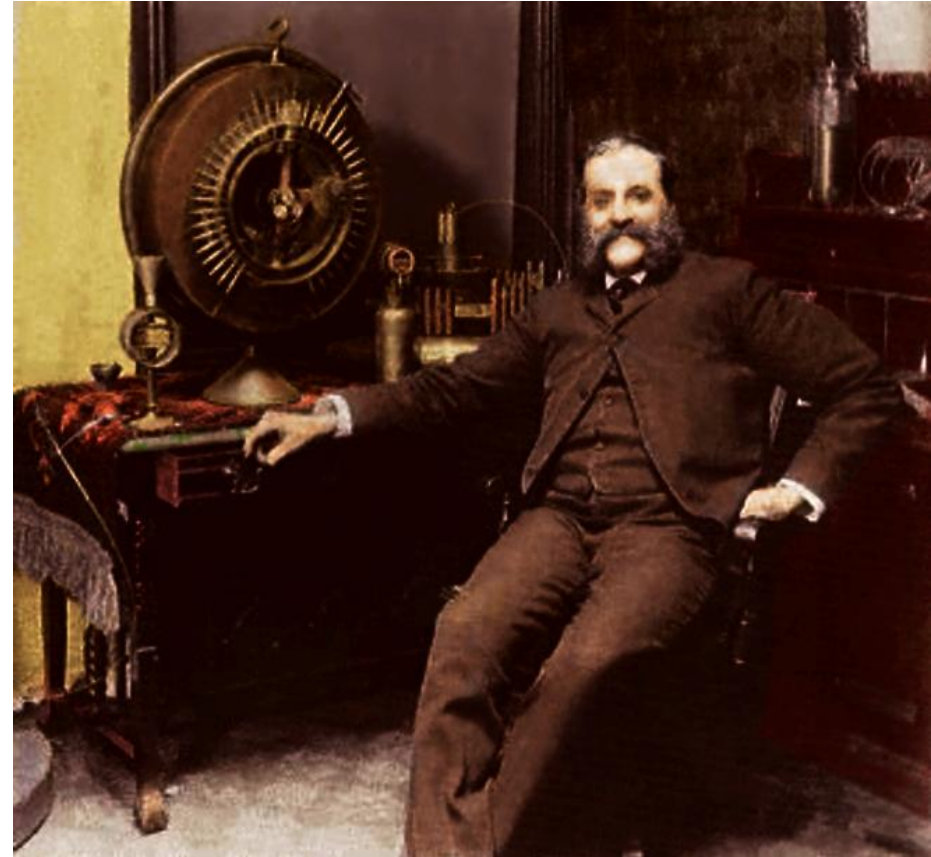


INNER EXHALATION

- Life ether goes in and is taken up by the human being through the interplay of exhalation and metabolism
- Where exhalation leaves the digestive-metabolic process behind — not the external metabolic process of food consumption, but the inner metabolic activity
- There is a “stop” for the life ether
- The life ether forms a human organism that **wills**

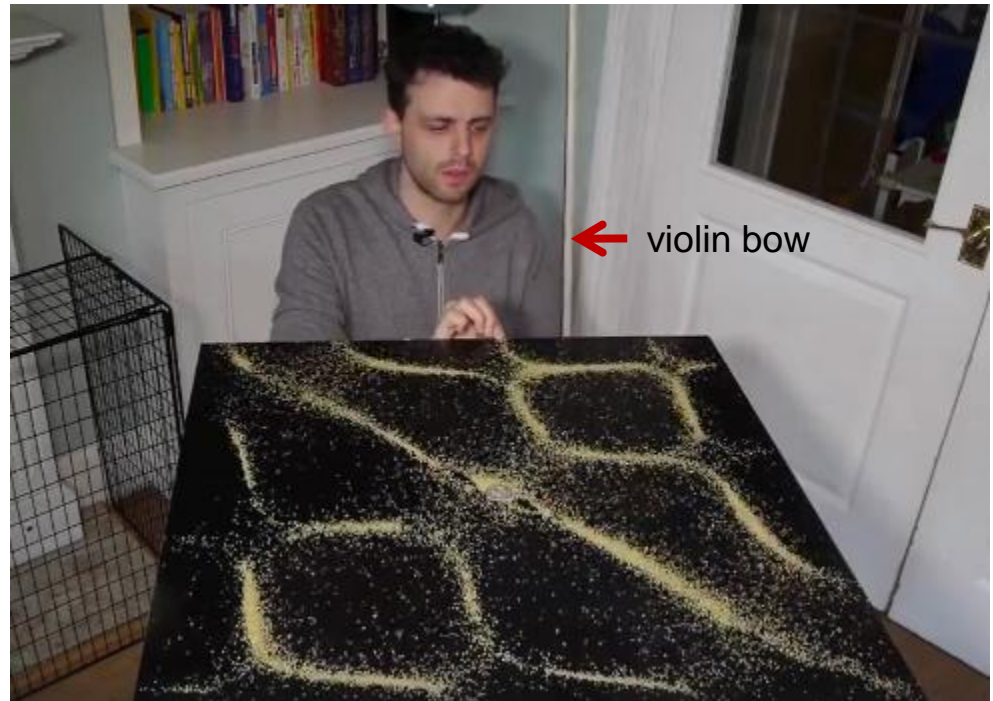
KEELY & RESONANCE

- Mechanical Occultism
 - West
- Frequency & Wavelength
 - As long as we research in mere numbers, we'll not find this resonance
- Keely played music to start his machine



RESONANCE

- Chladni resonance (see [video](#)) from tone from bow
 - Making it visible
 - Picture Forming
- Eurythmy
 - Inner experience
- Moral uses
 - Keely machines
 - Use of prosthetics
- Creativity - Tone
 - Procreation
 - Larynx
- Movement in water
 - Fish





TOWARDS KEELY & STRADER MACHINES

- The world's first brain-controlled drone race
 - Using their brainwaves, 16 pilots flew drones through an indoor course ten yards long
 - “With events like this, we’re popularizing the use of BCI instead of it being stuck in the research lab. BCI was a technology that was geared specifically for medical purposes, and in order to expand this to the general public, we actually have to embrace these consumer brand devices and push them to the limit.”
 - <http://futurism.com/university-florida-holds-first-drone-race-using-mind-control/>

- # THE SCHILLER FILE
- Paul Eugen Schiller
-

INNER AND OUTER RHYTHMS

- What entity guides a given rhythm? Moon? Sun? Planets?
 - What is the best time of day to meditate?
 - To perform experiments or develop mechanical occultism?
 - Embryology: 10 moon cycles (as a memory)
- “The soul has a 14 day period of creative productivity, then a 14 day empty period” – R. Steiner, *Metamorphoses of the Soul*, lec.9, GA56, 9Dec09
- A person becomes free inwardly by making an external rhythm into an inner one – as has human and consciousness evolution
 - We have long since freed ourselves from the rhythm which connected our inner being with the moon
 - Hence we have emphasized that man lives through the phases of the moon inwardly, but these experiences are not caused by the moon in the sky
 - The course of the moon shows a similar rhythm because man has retained the rhythm inwardly, though outwardly he has made himself free and independent of it
 - The tides, as well as the course of the moon, are caused by deeper spiritual forces ***in the living earth***





MERGING MACHINES WITH OUR BODIES

- Physical body: transient but appearance of longevity
 - New: used by consciousness soul as its instrument, brain-thinking
 - That which forms crystals in the mineral realm is permeated in man by the Consciousness Soul e.g. magnetite crystals in the brain
- Etheric body: less-transient, motion, flowing river
 - Used by intellectual soul as its instrument
 - "No man ever steps in the same river twice" – Heraclitus
- Astral body: seat for birth of eternal, airy
 - Used by sentient soul as its instrument
- Ego 'body': eternity lives through the spirit, fiery
- Merging of machines and mankind
 - While it appears at the physical, it is more so at the etheric
 - Thinking, Feeling, & Willing in the soul act through the etheric
 - We couple to machines by harnessing the etheric
 - **What happens to such an etheric body?**
 - Does it become "parched" (where Ahriman can attach)?
 - *For my yoke is easy and my burden is light* – Matthew 11:30



RECAP FROM TONIGHT'S VISIT

- No Fear
- Not the What but the How
 - Merging Human and Machine will happen
 - Who will be doing this?
- Vibrations and Refined Breathing - research



Q&A



EXTRA MATERIAL

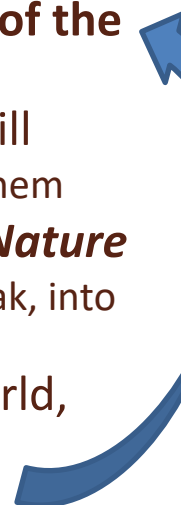


RESONANCE WITH ELECTRICITY AND LIGHT



FROM THE FIRST SCIENCE COURSE

STUDY OF ELECTRICITY AND MAGNETISM = STUDY OF MATTER

- “The moment we go on to the essential qualities of **mass** and **matter**, we are approaching what is akin to those **forces which develop in us when we are sleeping**
 - And we are going in precisely the same direction **when we descend from the realm of light and sound and warmth into the realm of the electrical phenomena**
 - We have no direct experience of the phenomena of our own Will
 - All we are able to experience in consciousness is our thoughts about them
 - ***We have no direct experience of the electrical phenomena of Nature***
 - We only experience what they deliver, what they send upward, to speak, into the realms of light and sound and warmth etc.
 - For we are here crossing the same boundary as to the outer world, which we are crossing in ourselves **when we descend from our thinking and idea-forming, conscious life into our life of Will**
 - All that is light, and sound, and warmth, is then akin to our conscious life, while all that goes on in **the realms of electricity and magnetism is akin — intimately akin — to our unconscious life of Will.**
 - Wherever Will is working through the metabolism, there too is working something **very similar to the external phenomena of electricity and magnetism**
- 



LIGHT COURSE, LECTURE 10

- The phenomena of **sound and tone and light** are **akin** to the conscious element of **Thought and Ideation** in ourselves, while those of electricity and magnetism are akin to the sub-conscious element of Will.
- Even as Feeling is intermediate between Thought and Will, so is the outer **warmth** in Nature intermediate between **light** and sound on the one hand, **electricity** and magnetism on the other.
- Increasingly therefore, this must become the inner structure of our understanding of the phenomena of Nature.
- It can indeed become so if we follow up all that is latent in Goethe's Theory of Color. We shall be studying the element of light and tone on the one hand, and of the very opposite of these — electricity and magnetism — on the other.
- As in the spiritual realm we differentiate between the **Luciferic, that is akin to the quality of light**, and the **Ahrimanic, akin to electricity** and magnetism, so also must we understand the structure of the phenomena of Nature. [*is electricity a comparable wave in sub-nature as light in super?*]
- Between the two lies what we meet with in the phenomena of Warmth.
- – R. Steiner, GA320



LIGHT AND ELECTRICITY

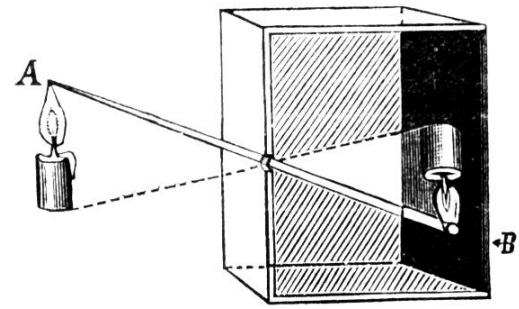
- “Complete opposites” – what does this mean?
- Light related to levity
 - Why do some need sunglasses? Why does light cause headaches?
- Light as opposite of weight/gravity
 - Balance and rhythms of light-dark
- Where are these within the human?
 - When does thinking become light? electricity?
 - Does what we think matter? How do our thoughts become real?
- Electricity as light under the negative-life influence



LIGHT & WEIGHT AS COSMIC ANTITHESSES

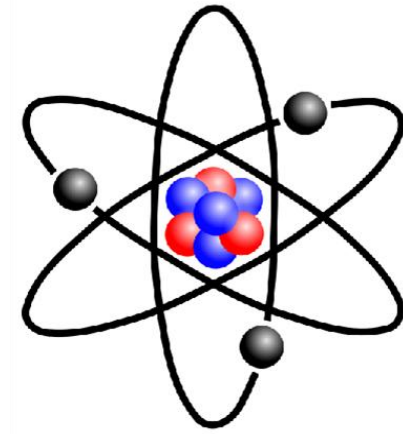
- Weight = Movement to balance within Gravity
- Asleep, the soul lives in light, and therefore in levity
 - One's will is 'crippled'
- Awake, it lives in weight, in gravity through the body
 - One's will is active
- Thus, light and weight are *cosmic* antitheses
- In light are dying world-thoughts
- In the forces of weight lie worlds to come through the seeds of will
- All this streams through the souls moving in space
- We are looking at the world physically, and, at the same time, morally

ACROSS THE THRESHOLD



- To move from one thought to another, we must use the will
 - A fine, delicate willing which transfers one thought to another
 - When in the sensory world, the whole extent of thinking and a small amount of willing are bound together in the head
- Over the Threshold it is the **reverse**: a small amount of thinking and much widespread willing is bound to the head
 - Through the eye of the needle
- In this willing, which otherwise sleeps, we sense the spirit
 - Previously the senses were the transmitters of sense-impressions, and one was not aware that the ***will goes through the eyes, through the ears, that the will goes through the sense of warmth, and through every other sense as well***
 - Now we see that everything the eye experiences as multiple colors, what the ear hears as multiple sounds, what man perceives as warmth and cold, as rough and smooth, smells and tastes etc., is all ***will in the spiritual world***

WHAT IS THE ATOM? STEINER



- The atom is nothing but coagulated electricity
 - Thought itself is composed of the same substance
- Before the end of the 5th PACA, science will have reached the stage where man will be able to **penetrate into the atom itself**
- When the **similarity of substance between the thought and the atom** is once comprehended, the way to get hold of the **forces contained in the atom** will soon be discovered
 - Then nothing will be inaccessible to certain methods of working
 - It is impossible to conceive what might happen if mankind has not, by then, reached selflessness
- The **attainment of selflessness** alone will enable humanity to be kept from the brink of destruction



AT BOUNDARY OF PHYSICAL & ETHERIC

- It cannot be compared with any other physical substance, yet it is the essence of *all* of them
 - Physical substances are modifications of this one substance
- To see it clairvoyantly was Rosicrucian endeavor
 - Requires a heightened activity of the soul's moral forces, which would then enable them to see this substance
 - Power for this vision lay in the moral power of the soul
- Discovered it exists in both macrocosm and microcosm
 - Macrocosm: in its mighty garment
 - Man: when harmonious interplay between thinking and willing
 - Thinking: in Man and in the rainbow and the rosy light of dawn
 - Willing: in Man and in thunder and lightning



ELEMENTAL BEINGS

- “The outstanding characteristic of these elemental beings dwelling in solid earth [gnomes] is cleverness, cunning, slyness — in fact, a one-sidedly developed *intellect*.”
 - They are very much more clever than human beings
- Water [undines] related to human feeling and Air [Sylphs] to will
- “We now live at a time when the intellect has begun to decline within the civilized world; it is falling into decadence.
- If mankind does not become receptive to what streams towards him from the spiritual world, then
 - The result of this dullness on man's part will be
 - (*and there are signs already – 1922 - of it happening*)
 - That these elemental beings will gather together to form a kind of union and place themselves under the leadership of the supreme intellectual power: Ahriman.”

- Source: R. Steiner, *The Elemental World and the Future of Mankind*, Dornach, 28May1922, GA 212

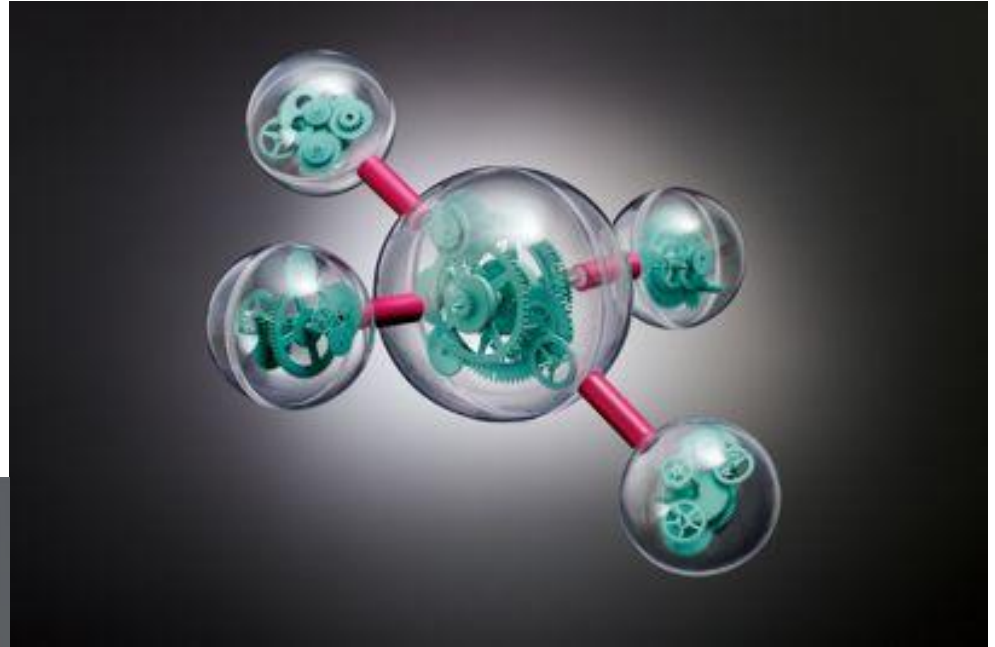
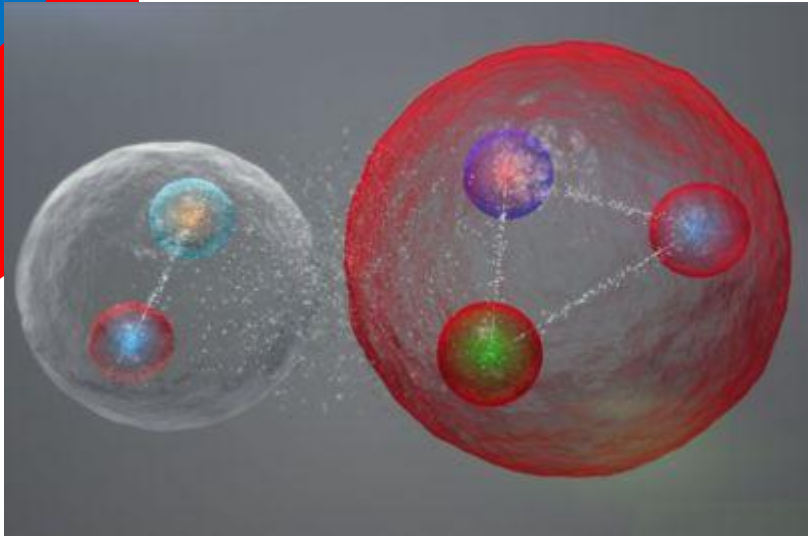


CONCERNING ELECTRICITY

- “When we think of them as atoms, in general, **when we imagine** matter in the form of atoms, **we transform** these atoms into **carriers of death**; but when **we electrify** matter, Nature **is conceived as something evil**
 - For electric atoms are [then] little demons of Evil
- This, however, does not tell us much; for it does not express the fact that the **modern explanation** of Nature set out along a path that really **unites it with Evil**
 - When we listen to a modern physicist blandly explaining that Nature consists of electrons, we merely listen to him explaining that Nature really consists of little demons of Evil!
- And if we acknowledge Nature in this form, we raise Evil to the rank of the ruling world-divinity”

EVIL ARISING FROM 'CONCEPTION'

- When we imagine matter in the form of atoms, we transform these atoms into **carriers of death**



- When we electrify matter, Nature is **conceived** as something **evil**

http://www.wired.co.uk/article/proton-radius-puzzle-mystery-new-measurement?__prclt=0usGEqMS



ELECTRICITY AS THE CARRIER OF EVIL

- “Good and evil forces in man could to a great extent influence the health and illness of other people, and consequently also birth and death
 - There was a connection between the actions of an Atlantean and the natural course of birth and death
- During the **4th PACA** this problem of **birth and death** was more connected with the human soul, but during our own epoch, the **5th PACA**, people will have to **struggle with evil** in the same elemental way in which they struggled with birth and death during the Atlantean age
 - Particularly through the **control of** the different forces of **Nature**, the impulses that lead to evil will send their influences into the world in an **immense, gigantic form**
- *The Overcoming of Evil*, R. Steiner, Dornach, November 4, 1917, GA 273



ELECTRICITY AS THE CARRIER OF EVIL

- “The forces of **good will have to grow out** of the opposition to evil
 - We will draw the strength for this opposition out of spiritual sources
- During the 5th PACA, **when the exploitation of electric forces** which will assume quite different dimensions from those which they have assumed so far, will ***enable*** man to **spread evil over the earth**
- **Evil will invade the earth by coming in an immediate way out of the forces of electricity”**
- *The Overcoming of Evil*, R. Steiner, Dornach, November 4, 1917, GA 273



ANTHROPOSOPHY AND ELECTRICITY

- “If Anthroposophy were to adopt a fanatic attitude, if Anthroposophy were ascetic, it would thunder against the modern civilization based on electricity
- Of course, this would be nonsense, for only world-conceptions that do not reckon with reality can speak in that way
 - They may say: “Oh, this is ahrimanic! Let us avoid it!” — But this can only be done in an abstract way
- **We cannot shut our eyes to the fact that we must live with Ahriman**
 - But we must live with him in the right way, that is to say, we must not allow him to have the upper hand”

– R. Steiner, *Concerning Electricity*, 28Jan1923, GA220

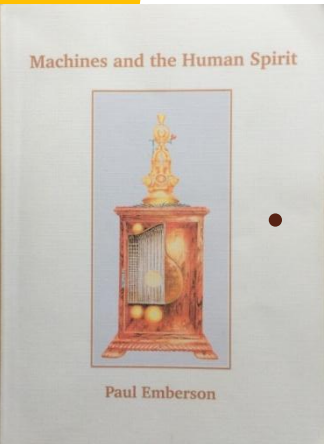


MODERN TECHNOLOGY & ROLE OF EVIL

- “Wherever electricity is used, there is demon magic
 - Demon magic **signifies progress** – we should not oppose progress”
 - R. Steiner, Karma of Vocation, lecture 9, GA 172
- In the 5th PACA, illusion, **Maya itself, will be seized upon by Evil**
 - It will all be permeated by cleverness, intelligence
- The human being can only come to **spiritual freedom** by *growing strong against the resistance provided by evil*
- Human beings will have to accustom themselves to **regard the inrush of the forces of Evil as an inrush of very laws of Nature**
 - *We will learn to know what lives and moves in the depths of things*
- We must not regard Evil from the outset as one would, who in the fullness of his egoism merely wanted to get away, to flee from it
 - We cannot do so but we must penetrate it with consciousness; we must learn to know it — **really learn to know it [evil]**
- Above all, in our time, *already a force is preparing* in the realm of human beings a force which tends to **create illusions** that are harmful and destructive
 - R. Steiner, *The Problem of Faust*, lecture 6, 4Nov17

SPIRITS OF BIRTH AND DEATH

- “The elemental spirits of birth and death are, of course, messengers of Ahriman. The iron necessity of world evolution forces the gods to use Ahriman's messengers to control birth and death. When they ask the elemental spirits to act on their behalf they do not allow the powers of these messengers to enter the physical world.
- But as civilization goes into its decline, from the fifth post-Atlantean period onwards, this element has to come in again, so that catastrophe may be brought about. **Human beings must use these powers themselves.** Ahriman's messengers are therefore an **iron necessity; they have to bring about the destruction that will lead to the next step forward in civilization.** This is a terrible truth, but it is so.” -- Rudolf Steiner, *The Fall of the Spirits of Darkness*, lecture 4
- All progress takes this course: wherever what has been created falls into ruin, we know that out of that ruin new life will always blossom -- Rudolf Steiner, *Leonardo da Vinci, His Spiritual and Intellectual Greatness At the Turning Point of the New Age*, Berlin, February 13, 1913, GA 62





WHAT WILL BE OUR FUTURE WORLD?

- “What is now around you will become your *inner life*
 - “You will take into yourselves what is now the mineral kingdom and it will become part of your inner being
 - Similarly the plant kingdom next
 - “What surrounds you in nature will become your inner being
 - [*What happens to our man-made world → inner being too?*]
- “What we ourselves prepare and make ready in the world
 - that is what will constitute our future existence
 - What you yourself place into the world becomes the consciousness that the world will give back to you
- “What we do with the mineral world, with the plant world, with the animal world, and with men, that we shall surely become”
 - “If you found a charitable institution or have contributed something to its foundation, what you have contributed will become an integral part of you”
- R. Steiner, *The Atom as Coagulated Electricity*, GA93



CREATION

- The inner of a spiritual being becomes the outer
 - From the living to the lifeless (as precipitant)
- Something from nothing: duality where the two cancel
 - Matter and anti-matter
 - Space and counter-space
 - Etheric and “fallen” ethers (warmth remains warmth)
- From Divine creating to creation/manifestation to Human creating a man-made world
 - We (so far) do not create life (from the lifeless to the living)
 - We are at the threshold, nay crossing it, trying to take the lifeless into the living (hammer it harder)
 - GMOs, space travel, ...



SELF-STARTERS

- “Forgive me if I now refer to something of great importance to our day by employing a rather trivial example. We must learn to use the Greek word ‘**Auton**’ (the same as appears in the modern word automobile) but not so that we apply it exclusively to **machines**, or understand it only in its external sense; we must learn to associate it as a ‘self-starting’ activity within the realm of spirit where it belongs. This advice might well be taken by our contemporaries.
- Men love a self-starting action in connection with machines, but they must learn to employ it also in connection with all they used to experience unconsciously in the Mysteries before the coming of Christ. This must now be learnt through ‘a setting of themselves in action,’ so that they gradually **become creative from within themselves**. The men of to-day will come to understand this when they fill themselves with the impulse brought to them by Christ.” -- *The Gospel of St. Matthew*, 11Sep1910, Berne, GA 123



DANGER OF VIBRATORY PHYSICS

- “That is the terrible law of the **sounding in unison of vibrations** which would be fulfilled if the alluring call of the cow would so decoy the orient that it would then be able to penetrate in an absolutely convincing way into the unspiritual, purely mechanistic civilization of the west and centre; and thereby it would become possible to **conjure up on the earth a mechanistic system fitting exactly into the mechanistic system of the universe.**
- Through this everything connected with the working of air, with the forces of the circumference, and everything connected with the working of the stars, would be exterminated from human civilization. What man experiences, for instance, through the cycle of the year, what he experiences through living together with the sprouting, budding life of spring, with the fading, dying life of autumn — all this would lose its import for him. Human civilization would resound with the clattering and rattling of the vibrating machines and with the **echo of this clattering and rattling** which would stream down upon the earth from the cosmos as a reaction to this mechanization of the earth.”

– *Man as Symphony of the Creative Word*, lecture 2, 20Oct1923, Dornach, GA 23



PURPOSE OF MACHINES?

- “In the whole realm of so-called Nature there is nothing in the proper sense un-living. The one exception is what Man makes artificially; **man-made machines** and mechanical devices.” -- *First Scientific Lecture-Course*, lecture 1, 23Dec1919, Stuttgart, GA 320
- “**We have the task of drawing down still further** on to the physical plane that which flowed from the soul in Greco-Latin times. Man becomes in this way, a being who sinks deeper and deeper into materiality. If the Greek in his works of art has created an idealized image of his soul-life and poured it into the human form, if the Roman in his jurisprudence has created something that still further signifies personal requirements, then our age culminates in machines, which are solely a materialistic expression of mere personal human needs. Mankind sinks lower and lower from heaven, and this fifth period has descended deepest, is the most involved in matter.
- If the Greek in his creations has lifted man above man in his images (for Zeus represents man raised above himself), if you find still left in Roman jurisprudence something of man that goes out beyond himself (for the Roman placed more value on being a Roman citizen than on being a person and an individual) then in our period you find people who utilize spirit for the satisfying of their material needs. For what purpose is served by all machines, steamships, railways, all complicated inventions?
- The ancient Chaldean was accustomed to satisfy his need of food in the simplest way; today an immensity of wisdom, crystallized human wisdom, is expended on the stilling of hunger and thirst. We must not deceive ourselves about this. The wisdom that is so employed has descended below itself right into matter.” -- *Theosophy of the Rosicrucian*, Evolution of Mankind on the Earth, lecture 2, 4Jun1907, Berlin, GA 99

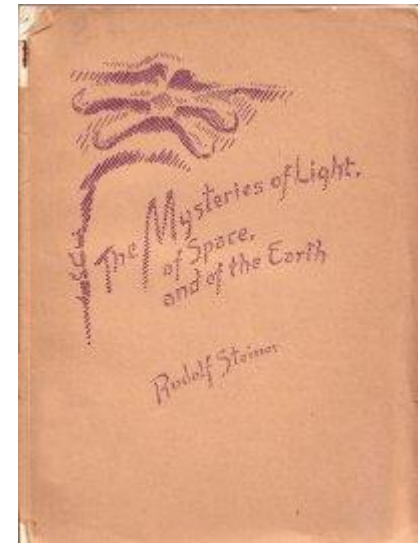
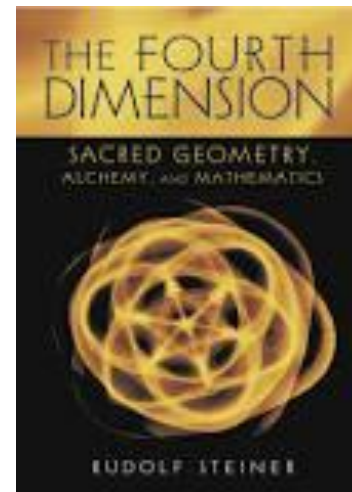
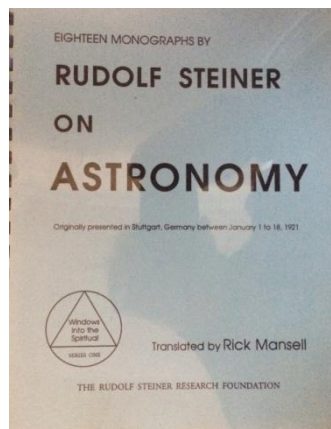
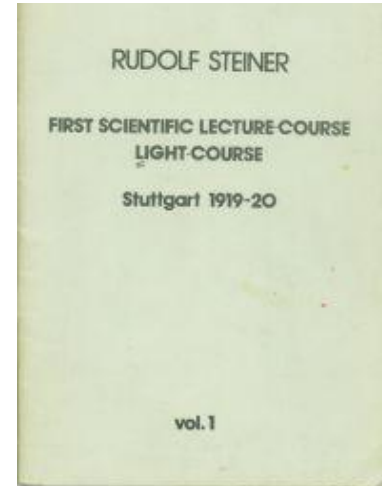


FRUCTIFICATION FOR HUMAN EVOLUTION

- “human beings will come to a standstill before 50 years is over. They will not be able to discover anything more unless they decide to take spiritual influences up into their thinking. They will reach a dead end. They will have to go to the next stage which will be a development of a spiritual scientific point of view, then they will be able to have new discoveries. Today we have machines only because we have inherited the ancient thinking in our consciousness. We see that the time demands that we allow ourselves to become fructified from the spiritual world. And only this fructification will make it possible to be able to understand the spiritual facts as anthroposophical spiritual science gives us. And unless this happens, the great world tasks will not be solved. I have often mentioned the fact that we are living in a time when the second appearance of Christ will occur shortly, the Etheric Christ Being, that second appearance of Christ upon earth. However, it is necessary to have a preparation in order that this event does not go by unnoticed.” -- *Things in Past and Present in the Spirit of Man*, 7Mar1916, Dornach, GA 167

SCIENCE LECTURE COURSES

- First: Light
- Second: Warmth
- Third: Relation of branches to Astronomy
- Fourth: Fourth Dimension
- Prelim: Mysteries of Light, of Space, and of Earth



APPROACHES TO MECHANICAL OCCULTISM

- Keely's pronouncements & indications obscured
- 1888: "Occultists generally believe that the **world is not yet ready** for the appearance of such terrible forces in the life of humanity. Man is too selfish, cruel, stupid, unsympathetic, bestial, to be entrusted with what in sober reality are secondary 'divine powers'." – Richard Harte, introduction to Mrs. Bloomfield-Moore's *Keely's Secrets*
 - Harte was secretary of the Theosophical Society in 1888
- Rudolf Steiner in *The Occult Movement in the Nineteenth Century* describes "**progressive and conservative sides**"
- **Strader / Mystery Plays**
- Intended to **transform social life**
 - Enables everybody to use this power in their own home
 - Nothing is said about its physical or technical characteristics
 - Maintains itself but cannot set itself going
- Technical realization miscarries
 - *The Soul's Awakening*
- **It should be done in America**
 - Wireless resonance

Which
side are
you on?



FOUR PATHS OF MOVEMENT

1. Above: Nerve paths are the external, physical paths for thinking
 - Incoming activity
 - Karma from previous earth-life
2. Upper: Arterial circulation
 - Karma for between birth and death flows in
3. Lower: Venous circulation: takes place between exhalation and metabolism
 - Karma for between birth and death dams up, accumulates, mysterious waves
4. Below: Lymph system and formation: process by which the life ether is taken up from below, from outside
 - Lymph goes into the blood (they are similar except for red corpuscles)
 - Beginning of the path of future karma driven into subconscious as a seed



INFLUENCES

- Ahrimanic Power counts upon those human beings who are especially developed in the sphere of fancy — whose perception of sense-reality quite naturally transforms into the pictures of fancy
 - To cut off the evolution of mankind from the past, carry it on in the direction of its own intentions
- Luciferic Power reckons on those human beings who, while naturally more developed in the sphere of Will, are inspired by an inner love for the ideal world-conception to transform their vision of sense-reality actively into pictures of creative fancy
 - To keep human evolution entirely within the impulses of the past
 - Keep mankind from diving down into the sphere where the Ahrimanic Power **must be** overcome



INFLUENCES

- Earthly existence: stand between two opposite poles
 1. Above us spread the stars
 - From there radiate the forces which are connected with all things calculable and regular in Earth-existence
 - The regular alternation of day and night, the seasons, the longer cosmic periods, are the earthly reflection of the real process in the stars
 2. Below us radiates the interior of the Earth
 - Irregular activities are at work in it.
 - Wind and weather, thunder and lightning, earthquakes and volcanic eruptions, are a reflection of this process of the inner Earth
- Man: an image of the existence of the Stars and Earth
 - In his **Thinking** system lives the **order of the Stars**;
 - in the **Willing** system of his limbs the **chaos of the Earth**
 - In the **Rhythmic** system he experiences in consciousness his own earthly being, in **free balance and interplay** between the two



HARMFUL EFFECT CONSIDERATIONS

Study describes a science-based protocol for evaluating patients for electromagnetic hypersensitivity (EHS)

- **EHS** has been *mischaracterized as a psychological issue*, resulting in profound suffering and violations of basic human rights
- "These different tests can be performed under less polluted, environmentally controlled conditions to diagnose chemical and electrical sensitivity precisely"
- Takes the guess work out of the diagnosis
 - Performed in 30,000 patients seen at the EHC-D in the last 35 years
- "The pitfalls of ignoring the principles and facts developed,...can lead to errors in diagnosis and treatment"

Source: Dr. William Rea of the American Academy of Environmental Medicine article: *History of Chemical Sensitivity and Diagnosis*

- <http://www.degruyter.com/downloadpdf/j/reveh.ahead-of-print/reveh-2015-0021/reveh-2015-0021.xml>



AIR, WARMTH, LIGHT, SOUND, ...

- **Jehovah breathed into man** the living breath — the air — and that thereby a living soul came into being
- "With the **descent** of the elemental consistency in the direction of density — there is a **corresponding ascent** towards a more rarefied, more etheric condition, so that if we call “air” the elementary condition next below warmth, we must call the condition next above warmth, light, or light-ether. ...
- Then, above the light, we have a finer, more etheric state that we may give the name “sound-ether” to what works within substances as an organizing principle, causing chemical combinations and chemical analyses; it is something which man can only recognize with his external senses when it is transmitted by the air, but it lies spiritually behind all existence
 - We might call it “ringing” or tonic ether
 - Alternatively, because this spiritual sound organizes material existence according to number and weight, we might also call it the ether of numbers



OSCILLATION AND RESONANCE

- Playground swing
- Circadian cycles
- Daily, weekly, monthly cycles
- Moon cycles
- Seasonal: Polar ice cap thaw and freeze
- Platonic Year: Ice Ages
- Solar system within the galaxy (within the Milky Way)
- Universe (big bang expansion – contraction)



MICROCOSM OF THE MACROCOSM

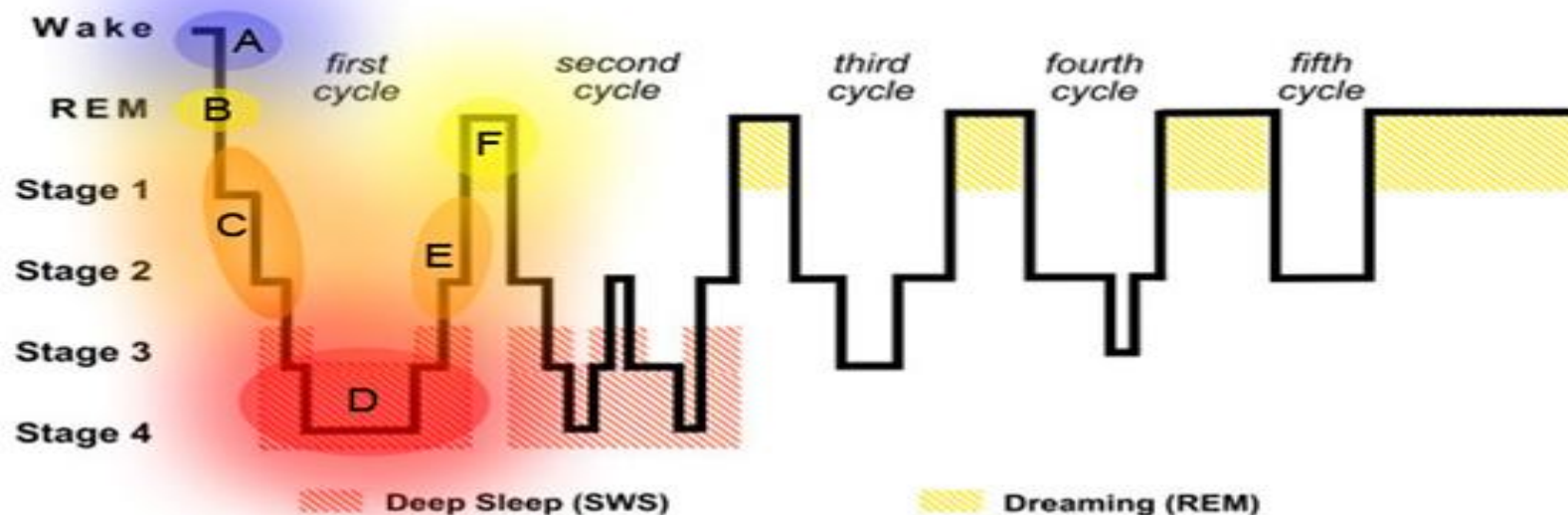
- Nerves
- Blood
- Nerve-Blood, breathing
- Thinking as breathing
- Thinking as light
- **Air** - oneness with the Air of the Earth – **willing**
- **Warmth** - oneness with the Warmth of the Earth – **feeling**
- **Light** - oneness with the Light of the Earth – **thinking**



RELATIONSHIP OF MAN AND EARTH

- Alpha waves: 8 Hz
- Breaths: 18/min or 25920/day
- Heart:Lungs is 4:1
- Eye: 24 pic/sec
- Ear: ?
- Sleep – Awake
- Earth's electrical resonance: 8 Hz
- Platonic year: 25920 years
- 4 seasons/year
- 24 hours/day
- ?
- Death – Rebirth

SLEEP RHYTHMS



- A: awake state: ego, astral, etheric, and physical bodies are united
- B: relaxation towards sleep occurs, ego and astral body loosen
- C: partial separation of ego and astral bodies
- D: ego and astral bodies are essentially separated
- E: ego and astral bodies approach physical and etheric bodies
- F: astral and ego close enough for dreaming

Source: Seth Miller, <http://elements.spiritualchemy.com/articles/SleepAndDreams.html>



NATURAL AND ARTIFICIAL RHYTHMS

- Adjust with season
 - Bed time
 - Meals
 - Study/work ratio
 - Home warmth
- Adjust with cosmos
 - Celebrations
 - Moon events, tides
 - Planting/harvesting
- Set bed time 10 pm
- Fasting 1 day/week
- Meditate at 8 am
- Will act at 11:30 am
- Grain of the day
- Concerts TH nights
- Coffee w/friend
- Study group rhythm



TERRESTRIAL VIBRATORY PHYSICS

- Schumann oscillation of the earth's magnetic field:
 - Frequency: 8 Hertz (cycles per second)
 - Frequency of human brain waves: 8 Hz
- Bodily circadian rhythms:
 - Daily cycles of metabolic activity accompanied by changes in hormone secretion such as melatonin from pineal gland
 - Necessary part of life in organisms including human beings
 - Strongly influenced by environmental electromagnetism
- Complex rhythmic changes
 - Earth's magnetic field and our moon
 - Movement of the planetary bodies reveals, purely at the level of electromagnetism, the vibratory connectedness of the human being with the whole cosmos

SHELDRAKE'S MORPHIC RESONANCE

- “is the influence of previous structures of activity on subsequent similar structures of activity organized by morphic fields. It enables memories to pass across both space and time from the past. The greater the similarity, the greater the influence of morphic resonance. What this means is that all self-organizing systems, such as molecules, crystals, cells, plants, animals and animal societies, have a collective memory on which each individual draws and to which it contributes. In its most general sense this hypothesis implies that the so-called laws of nature are more like habits. ... Form-shaping could not be inherited through genes. ... Morphic resonance involves the transfer of information across space and time.”

