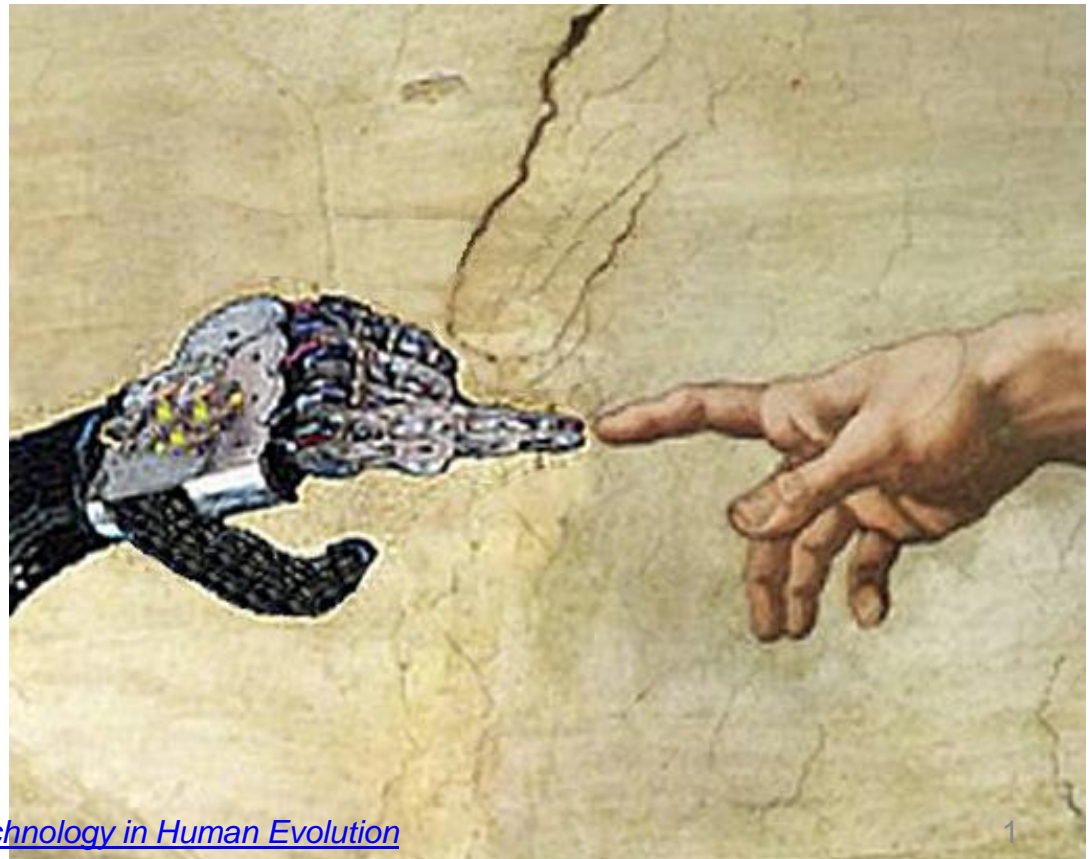




THE ROLE OF TECHNOLOGY IN HUMAN EVOLUTION PART 3

Exploring The Western Path

HOW Cafe
Andrew Linnell
jandrewlinnell@yahoo.com
www.thechristianmysteries.org





RECAP PART 1

- Hellenistic and Renaissance times
- Prometheus: chained to rock, released by initiation and sacrifice of centaur
 - Image of our times, we are so chained, centaur within each
 - “Upon this rock I build my church”
- Hephaestus: thrown off Olympus, returns on donkey
 - God of technology and fire, one foot malformed
- Rise of artificial intelligence and artificial soul
 - Why? Evolution? Stay tuned for answer next week
- Merging of Mankind and Machine
 - Science of prosthesis, will centered
 - Why? Evolution? Stay tuned for answer next week
 - Slippery slope, sneaks in for altruistic purposes



RECAP PART 2 – MANY MORE QUESTIONS

- Augmentation of life, body, brain
- What are machines doing to us?
 - Jobs, servants, will
 - Emancipation (from what?)
- Machines with artificial intelligence, artificial soul
 - How will it affect our sense of humanity?
 - What will it mean for humans to have sex with machines?
 - Will we ‘fall in love’ with a machine?
 - What is missing?
- Merging Human and Machine
 - How many body parts can be replaced before love ceases?
 - Our spiritual goal: Love and Freedom

spirit

soul

life



“It is an indispensable condition of initiation that we should not wish things were otherwise.”

-- R. Steiner

MAN AND MACHINES: CAN WE BECOME FRIENDS? WILL WE MERGE?



ORIGIN OF EVIL

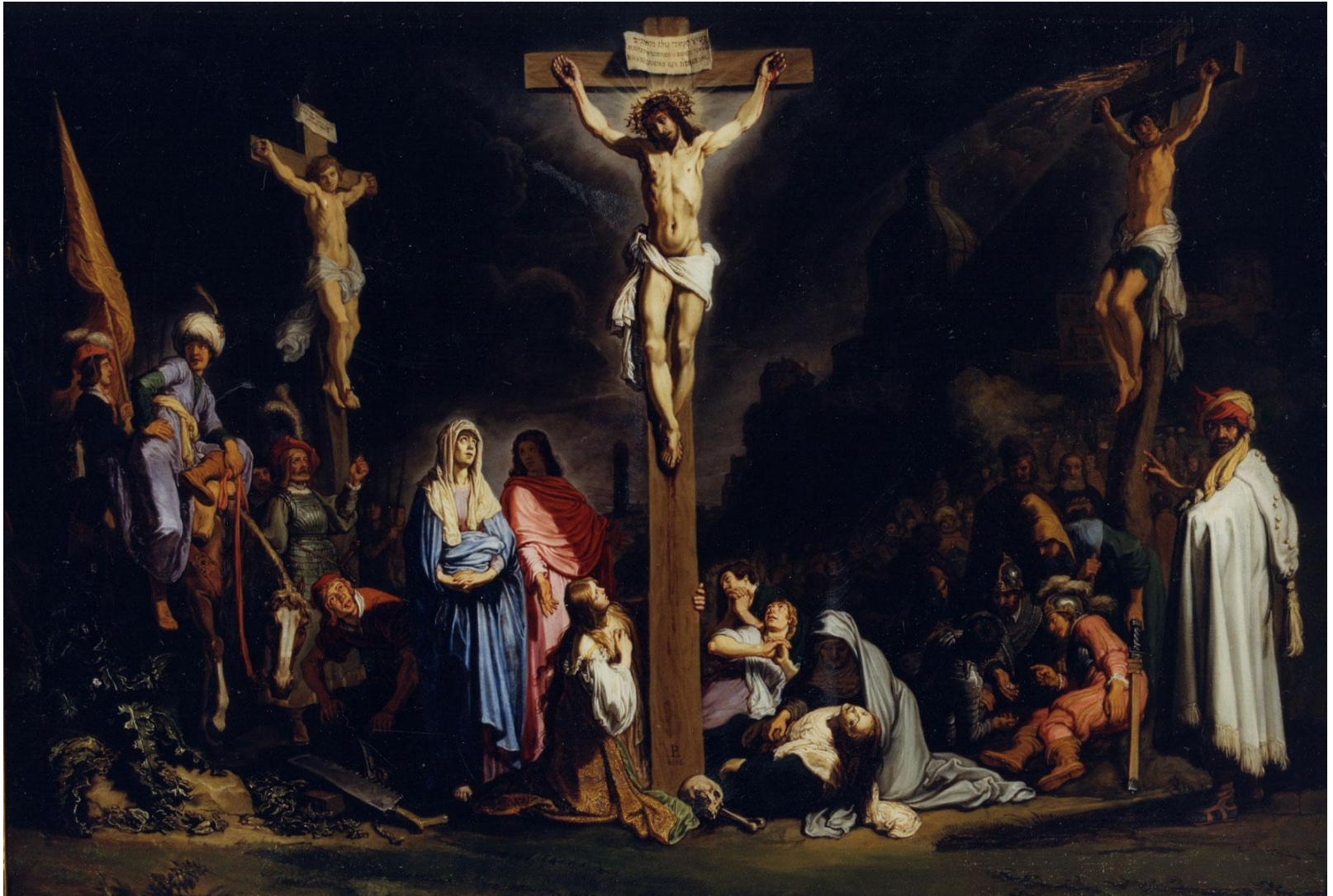
- Greek mythology: gods received nectar and ambrosia from mortals
 - Both signify form of love; love is created within the human race
 - Love which is created by man is nourishment to the gods
- Love appears to begin with as sex-love and evolves up to the highest divine love (agape)
 - But all love, lower and higher, is, nonetheless, nourishment for the gods
- *'With an almighty God, why is there evil?'*
- Wisdom underlies the world and is the guide of love-that-evolves
 - Wisdom permeated by love is the beginning of earthly evolution
- Just as all wisdom is born out of error, so does love struggle to the heights only out of error, only out of conflict
 - As conflict exists on the earth so was error on previous human stage (Old Moon)
 - As love is a human instinct today so was wisdom a human instinct on Old Moon
 - Luciferic beings failed to rise to the height of wisdom
 - Today Luciferic beings approach the lower, unevolved element of love thereby forming the bridge between wisdom and love
 - Thus, impersonal wisdom mingles with personal love: self-love & self consciousness



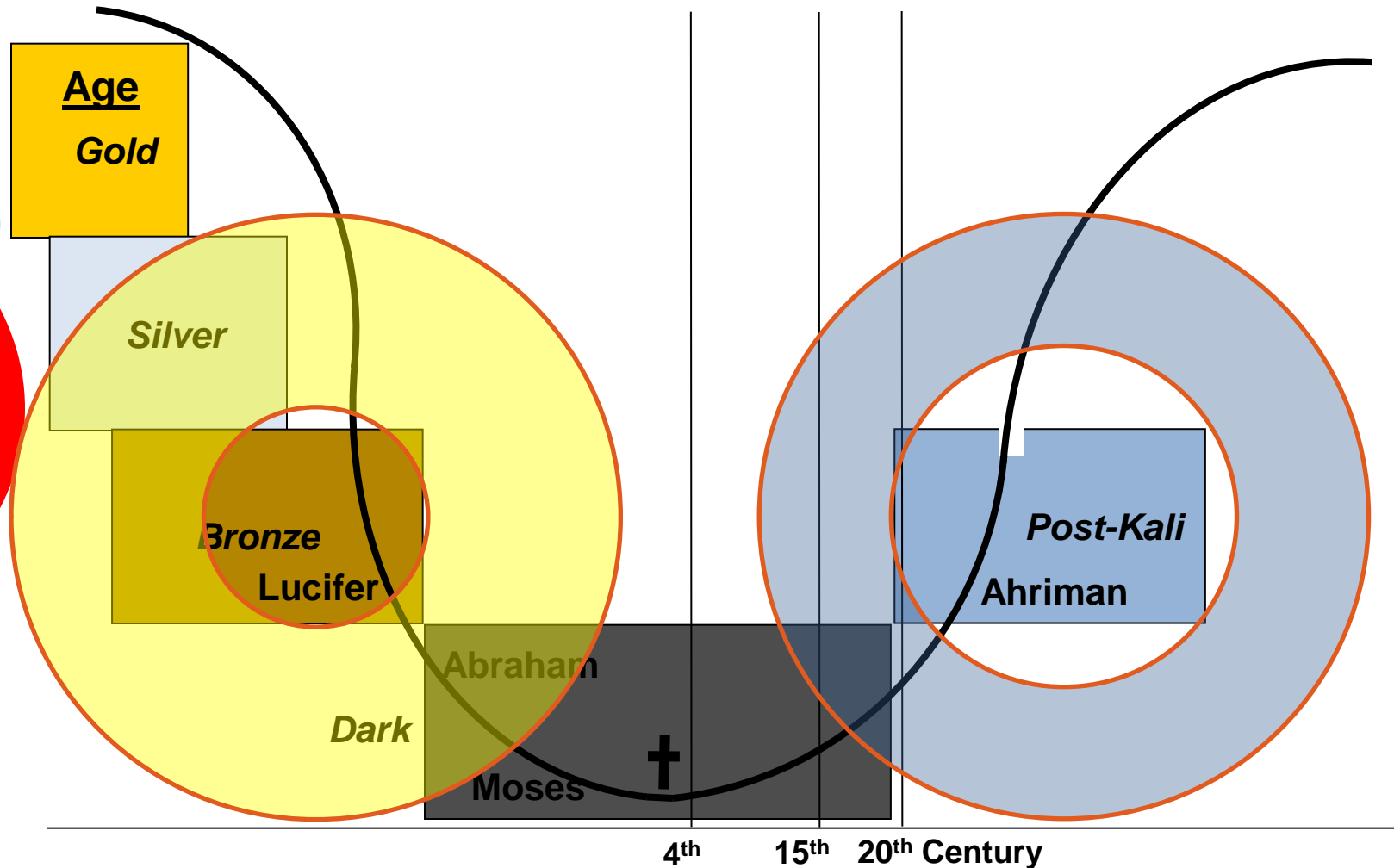
OUR WORLD WITHOUT EVIL

- Without evil there could be no self-feeling, no free choice of good
 - Through Lucifer we were offered freedom
- In order to be able to *choose* good, man must also have the bad before him
 - It dwells within him as the force of self-love that can become the love of all
- Freedom and evil have the same original source
- Evil is good when in its place but, with us, it is no longer good
 - Evil is good out of place
- The absolute good of a prior planet always brings evil to the next planet
 - Evil is a necessary course of evolution
- Lucifer is light bearer and makes man humanly enthusiastic for the divine
 - Elohim are light itself
- Where light of wisdom is kindled in man, there has Lucifer been active
 - Lucifer brings a shrunken, blemished wisdom that can penetrate into man
 - Lucifer mixes in the leaven of the old dough into the new bread of earth
 - Bearer of external human science which stands in the service of egotism
- Pupils of esotericism: selflessness in regards to knowledge is demanded
- Rudolf Steiner, GA055

THREE CRUCIFIED, PIETER LASTMAN (1616)



POST ATLANTEAN HISTORICAL PICTURE PENDULUM





WHEN THEY ENTERED OUR HUMANITY

- **Lucifer:** the light bearer
 - Lemurian times
 - Human **Astral** body, thus the nerves and senses, Tree of Knowledge
 - Unconscious elaboration of the ego on the Astral body: Sentient Soul
- **Ahriman:** the prince of darkness
 - Atlantean times
 - Human **Etheric** body, Tree of Life, desires the blood (withheld)
 - Unconscious elaboration by the ego on the Etheric body: Intellectual Soul
- **Asuras**
 - Post-Atlantean (current) times
 - Human **physical** body
 - Unconscious elaboration of the ego on physical body: Consciousness Soul



AHRIMANIC IMPULSE

- Luciferic impulses sank down gradually into the soul
- Ahrimanic impulse rises up from the solidity of ‘reality’
 - Thinking pushed down to function in our brain (and in machine)
 - Ahriman’s cosmic role has to do with the solid, Earth element
- Ahrimanic impulse grows stronger in modern times
 - It will become increasingly strong in the near future and on into future ages
 - The influence of this Being becomes especially powerful in the 5th PACA
- Ahrimanic impulse proceeds from a super-sensible Being different from the Being of Christ or of Lucifer
 - Equally with ‘super-sensible’ one can say ‘subsensible’
 - R. Steiner, *Ahrimanic Deception*, GA 193, 27 Oct 1919
- Dual America: Holy Experiment & where Ahriman will incarnate
 - Ayatollah Khomeini “America is the great Satan”



AHRIMAN'S INCARNATION

- Balances Lucifer's – early in the 3rd Millennium
- Incarnation = made flesh : macro + microcosm
 - Macro: plane at infinity + micro: 'zero' point of infinity
 - Recapitulation, ontogeny recapitulates phylogeny, life preceeds lifeless
 - Preparation:
 - Outside world “shrinks” to be more solid
 - Inner world becomes more calculable, ponderable, and meaningless



PREPARATION FOR AHRIMAN'S INCARNATION

“It is essential for the favorable effect of what Ahriman will bring to humanity—he will bring beneficial gifts too, just as Lucifer did—that we take the right attitude. The all important thing is that we do not sleep through Ahriman's arrival and fail to perceive it.”

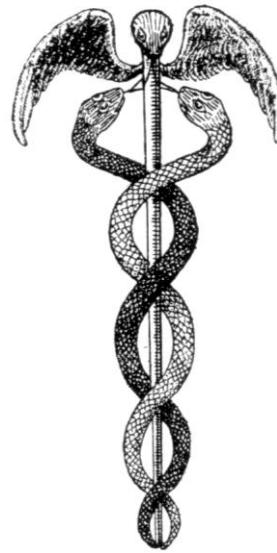
R. Steiner, Stuttgart, 28 December 1919

CALCULABLE AND INCALCULABLE

- **Lucifer** can't combine with his own form of being **anything calculable**
 - Role: freedom where it should rightly rule events
 - Without his aid, freedom would never make its way into Man's spiritual and soul life
 - Ideal: cosmic unconditioned action of intelligence & will
- **Ahriman** stands as complete opposite to the divine spirit-beings
 - Ahriman: cold **hate of everything expanding in freedom**
 - Ahriman's aim and endeavor is to **make the cosmos a machine**
 - His ideals: Measure, Number and Weight
- **Michael** intervenes: **stands** in the Incalculable **dressing** the balance between the Incalculable and the Calculable that he bears within him as a World-thought received *from his Elohim*
 - These Elohim are at present purely spiritual beings who bear within themselves perfectly free intelligence and perfectly free will; they
 - Create, in free intelligence and will, a wise insight into **the necessity of the Calculable**
 - Are united in Love and **this Love streams** from their place in the hierarchy throughout all the universe



CALCULABLE AND INCALCULABLE



- **Order** was established between Calculable and Incalculable
- Between birth & death, Man has the Calculable ready-laid for his body
 - Provides groundwork needed to unfold the free Incalculable of his inner, spiritual soul-life
 - Between death and new birth: we exist in the Incalculable
 - We ponder the Calculable
 - Thereby — **out of this Calculable** — one becomes the architect of their next earth-life
- He who comprehends the world as everywhere **Spirit-in-body**, he alone really comprehends it

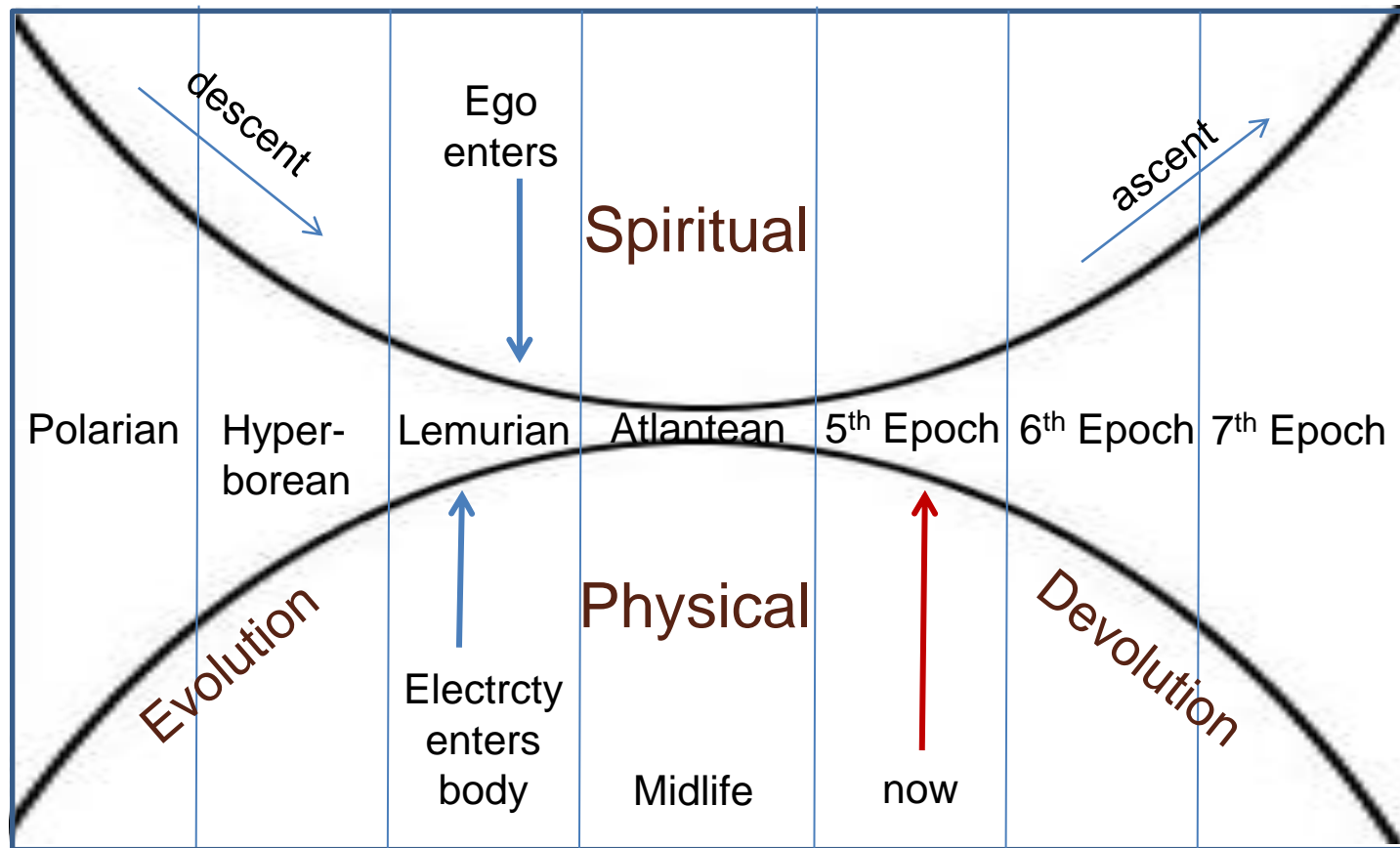
- Source: R. Steiner, *Michael Mystery*, lecture XV, GA026



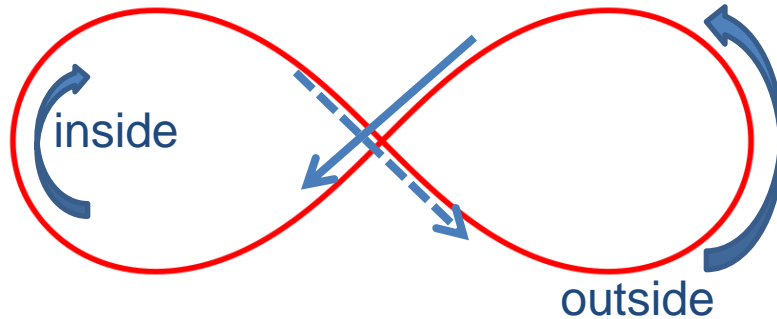
BECOMING THE CALCULABLE

- The farther back clairvoyant vision penetrates into the past, the more the Macrocosm is seen in ever greater **fullness** (pleroma) of life
 - Life in the remote past ceases all calculability of its life-manifestations
 - From this fullness of life Man is gradually separated out
- Macrocosm passes more and more into the **sphere of the Calculable**
 - Therein, however, **the macrocosm slowly dies out**
 - In the same measure as Man, the Microcosm, emerges as an independent being out of the Macrocosm – the Macrocosm died – *the Western Path and the Cosmic Christ*
- The cosmic Present shows an **extinct Macrocosm**
 - But in the process not only Man has arisen; out of the Macrocosm has arisen also the Earth
- In the beginning of the age of the Spiritual Soul, men have accustomed themselves to direct their observation to the physical proportions of the Universe in Space, and to regard primarily its bigness in this respect
 - Accordingly, they speak of the **Earth as a grain of dust** in the midst of this, to physical appearance, so gigantic Universe
 - To the consciousness of the seer, this ‘grain of dust’ reveals itself as the **first life-seed** of a newly arising Macrocosm; whilst the old Macrocosm can be seen to have died out
 - **It was necessary for it to die and become extinct, in order that Man might separate himself out from it in full Self-consciousness**
- In the present cosmic age, Man takes part in the dead and dying Macrocosm with his **Thinking** forces, which give him **freedom**
- With his **Will**-forces, whose real being is hid from him, he takes part in the young Macrocosm that is springing up as Earth-born **seed into new life**

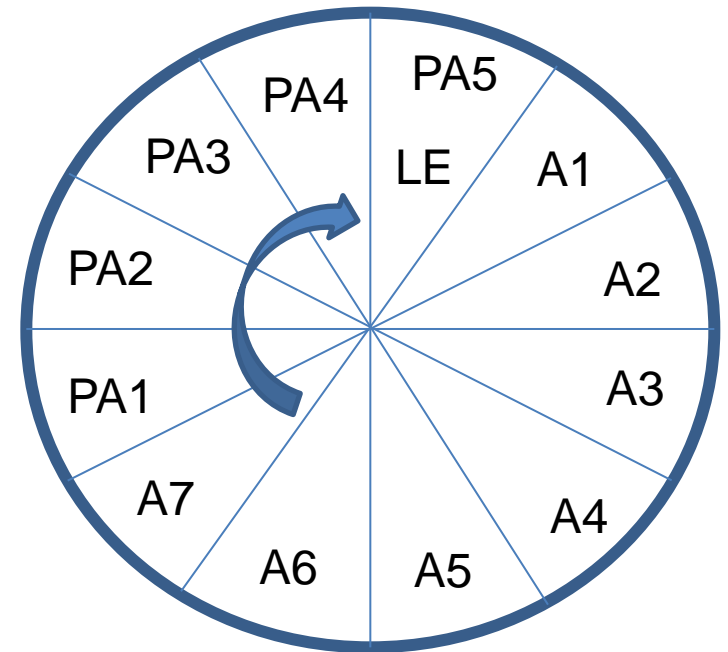
"DUALIST'S" EVOLUTION-DEVOLUTION



IN TO OUT AND OUT TO IN



- During Lemuria, electricity existed outside of body
 - As it became inside, we passed through a mid-point
- In the 18th century this crossing point was reached again
- Now electricity moves from within to the outside
 - Homes with “nerves”, robots, future bodies
 - Will activity, hand movement, EMR



G. Wachsmuth, The Evolution of Mankind, 1961

EVOLUTION OF CONSCIOUS AWARENESS

Not to scale

Spiritual world full of beings

Sentient Soul 3rd M BC

Ancient Mysteries

Intellectual Soul 8th C BC



End of the "Earth" (4th C)

seals → trumpets
1413 5th PA Age

Consciousness Soul

Jesus was just a good man

Who needs religion anyway?

He who you seek is no longer here!

8th M Moon returns

American Cultural Age

7th M Women are infertile

5733 End of 6th PA Age

Russian Cultural Age

3573 End of 5th PA Age

End of 20th C Meeting with
Sp. Beings

What happens to our
bodies?

Materialism →



RECAP PART 3

- The three main spiritual entities for earth and humanity
 - Incarnations: 3rd M BCE, 1 AD, 3rd M AD
 - Three challenges: Lucifer, Ahriman, and Asuras
- Lucifer and Christ
 - The Past and the Future
 - Moon and Sun
- Christ and Ahriman (Satan)
 - Becoming creators and being real
 - Spiritualizing the Earth and achieving earthly immortality
 - All humanity and saving oneself
- Ahrimanic Impulse
- Evolution of Consciousness – Infertility and Moon
 - Need for GNR to remain connected with earth evolution
 - Need help from the dark spiritual beings – thus must inner strength



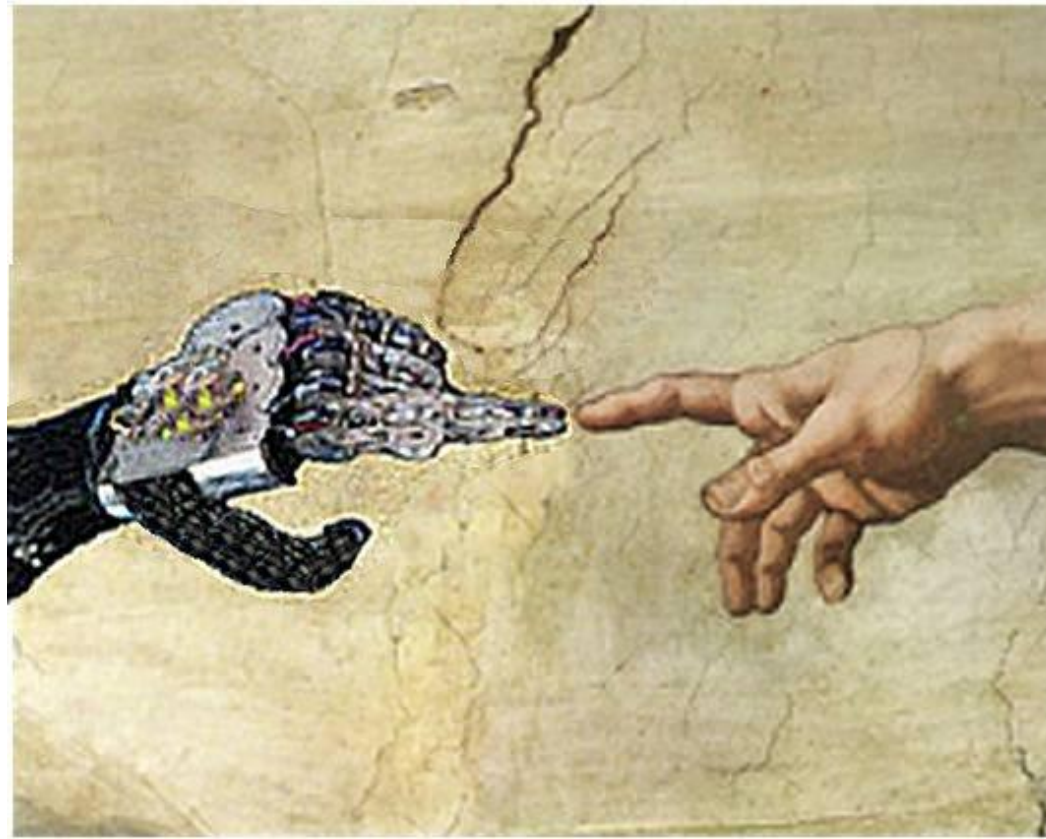
NEXT WEEK: PART 4

- Tying it all together
- Asexual humans to sexual and back to asexual
- Evolution at the end of Post-Atlantean Ages
- Fulfillment of Christianity: Love & Freedom
- Evolution on to the next planetary condition
 - The fruits of Earth as the seed of the next
 - Love and Freedom

spirit

soul

life



END PART 3

FACING THE FUTURE

- We must eradicate from the soul all fear and terror of what comes towards Mankind, out of the future. We must look forward with absolute equanimity to whatever comes, and we must think only that whatever comes is given us by a world direction full of wisdom.
- It is part of what we must learn during this age, namely to act out of pure trust in the ever present help of the spiritual world; truly nothing else will do if our courage is not to fail us.
- Therefore let us discipline our will, and let us seek the awakening from within ourselves, every morning and every evening.

Rudolf Steiner

